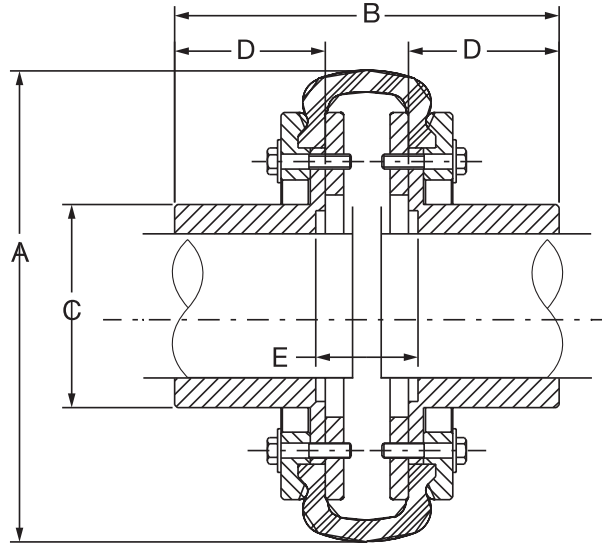




# SELECTION/DIMENSIONS

## Bored to Size, Type BBS



### PX60 Thru PX320 Type BBS Couplings

Coupling Size	Min. Bore	Max. Bore	HP/100	Torque (In-Lbs)	Max. RPM	A	B	C	D	E	Weight (1) (Lbs.)	Inertia (2) (Lb-Ft <sup>2</sup> )
PX60BBS	none	1-1/2	2.86	1,800	4000	6.50	4.28	2.38	1.50	1.28	8.8	.21
PX70BBS	none	2-1/8	3.49	2,200	3600	7.38	5.00	2.94	1.75	1.50	12.8	.32
PX80BBS	none	2-9/16	5.72	3,605	3100	8.38	5.50	3.69	2.00	1.50	18.4	.79
PX90BBS	none	2-3/4	7.15	4,502	2800	9.25	6.03	4.13	2.25	1.53	25.6	1.4
PX100BBS	none	3-1/4	8.58	5,402	2600	10.00	6.97	4.94	2.63	1.72	36.4	2.5
PX110BBS	none	3-15/16	12.30	7,750	2300	11.00	7.56	5.44	3.00	1.56	47.3	4.2
PX120BBS	none	4	20.00	12,605	2100	12.38	8.25	5.81	3.25	1.75	68.4	7.0
PX140BBS	2-1/4	4-1/2	44.00	27,590	1840	14.13	9.81	7.00	3.88	2.44	127.2	16.4
PX160BBS	2-1/2	6	60.00	37,800	1560	16.63	12.94	8.50	5.13	3.06	210.8	39.6
PX200BBS	2-7/8	6-3/4	131.00	82,500	1300	20.00	15.56	9.38	6.13	3.75	333.5	76.9
PX240BBS	4	7-1/2	240.00	151,200	1080	24.13	14.16	10.00	5.13	4.34	481.0	188.1
PX280BBS	4-7/16	9	480.00	302,200	910	28.50	18.47	12.00	7.13	4.66	802.0	440.8
PX320BBS	5-1/2	11	719.00	453,000	810	32.50	20.75	14.00	8.13	4.94	1074.0	709.6

(1) Weight of complete coupling at maximum bore

(2) Inertia of complete coupling at maximum bore

FEATURES/BENEFITS PAGE PT1-2	SPECIFICATION/HOW TO ORDER PAGE PT1-3	MODIFICATION/ACCESSORIES PAGE PT1-79	ENGINEERING/TECHNICAL PAGE PT1-81
---------------------------------	--	---	--------------------------------------



# SELECTION/DIMENSIONS

## Bored to Size, Type BBS



### PX60BBS - PX320BBS Part Numbers

Coupling Size	BS Flange Assemblies Rough Bore	Standard Element
PX60BBS	010300	011106
PX70BBS	010301	011107
PX80BBS	010302	011108
PX90BBS	010303	011109
PX100BBS	010304	011110
PX110BBS	010305	011111
PX120BBS	010306	011112
PX140BBS	010530	011114
PX160BBS	010531	011117
PX200BBS	010532	011120
PX240BBS	010533	011124
PX280BBS	010528	011457
PX320BBS	010529	011463

Unless otherwise specified, Size 60-120 BBS flanges are clearance fit per AGMA 9002. Size 140-320 BBS flanges are interference fit per AGMA 9002.

See page \_\_ for additional details.

**Complete coupling consists of: (2) BS Flange Assemblies and (1) Element.**

### PARA-FLEX Elements - Part Numbers

Element Size	Standard	Neoprene (1)	Cordless (2)	Weight (Lbs)
	Part No.	Part No.	Part No.	
PX40	011529	012455	012456	0.3
PX50	011105	011296	011285	0.7
PX60	011106	011297	011286	1.2
PX70	011107	011298	011287	1.6
PX80	011108	011299	011288	2.2
PX90	011109	011300	011289	2.6
PX100	011110	011301	011290	2.5
PX110	011111	011302	---	3.0
PX120	011112	011303	011292	4.8
PX140	011114	011304	---	5.6
PX160	011117	011305	---	9.1
PX200	011120	011306	---	20.8
PX240	011124	011312	---	27.0
PX280	011457	011313	---	45.0
PX320	011463	011315	---	80.0

(1) Neoprene element ratings are the same as the standard natural rubber element ratings. (Green sticker or painted mark)

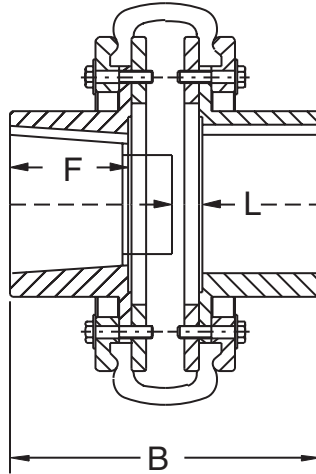
(2) Cordless elements have an average static torsional stiffness 25% of the standard element and approximately 25% of the torque rating. (White sticker or painted mark)

FEATURES/BENEFITS PAGE PT1-2	SPECIFICATION/HOW TO ORDER PAGE PT1-3	MODIFICATION/ACCESSORIES PAGE PT1-79	ENGINEERING/TECHNICAL PAGE PT1-81
---------------------------------	--	---	--------------------------------------



# SELECTION/DIMENSIONS

## Mill Motor, Type TBS



Size	For Mill Motor Size	Min. Bore	Max. Bore	HP/100	Torque (In-Lbs)	Max. RPM	B	F	L	Weight(1) (Lbs.)	Inertia(2) (Lb-Ft <sup>2</sup> )
PX60TBS	602,802*	none	1-1/2	2.86	1,800	4000	5.78	3.00	0.34	10.1	0.21
PX70TBS	603	none	2-1/8	3.49	2,200	3600	6.75	3.50	0.50	16.1	0.32
	802B,802C						6.25	3.00	0.56		
PX80TBS	603,803	none	2-9/16	5.72	3,605	3100	7.00	3.50	0.50	23.2	0.79
	604804						7.00	3.50	0.50		
PX90TBS	804	none	2-3/4	7.15	4,502	2800	7.28	3.50	0.53	29.9	1.4
PX100TBS	804	none	3-1/4	8.58	5,402	2600	7.84	3.50	0.72	44.4	2.5
PX110TBS	606,806	none	3-15/16	12.30	7,750	2300	8.56	4.00	0.59	62.3	4.2
	608						9.06	4.50	0.16		
PX120TBS	608,806	none	4	20.00	12,605	2100	9.00	4.00	0.63	81.4	7.0
	608,808						9.50	4.50	0.50		
PX140TBS	808 610-810 612	2-1/4	4-1/2	44.00	27,590	1840	10.63	4.69	1.19	136.2	16.4
							10.63	4.69	1.06		
							11.06	5.13	0.94		
PX160TBS	810 612-812 614	2-1/2	6	60.00	37,800	1560	12.50	4.69	1.69	227.8	39.6
							12.94	5.13	1.56		
							12.94	5.13	1.44		
PX200TBS	812 614-814 616-816 618-818	2-7/8	6-3/4	131.00	82,500	1300	14.63	5.19	2.19	344.5	76.9
							14.63	5.19	2.06		
							15.13	5.69	1.94		
							15.56	6.13	2.38		
PX240TBS	818 620	4	7-1/2	240.00	151,200	1080	15.22	6.19	2.97	519	188.1
							15.91	6.88	2.53		
PX280TBS	622 624	5-1/4	9	480.00	302,200	910	18.78	7.44	2.22	836	440.8
							20.78	9.44	2.22		

◆ Refer to page PT1-24 for additional envelope information

\* 1-1/4" per foot taper on diameter



# SELECTION/DIMENSIONS

## Mill Motor, Type TBS

### PX60 - PX280 TBS Part Numbers

Coupling Size	For Mill Motor Size	TBS Flange Assembly	Standard Element	BS Flange Assembly	Coupling Size	TBS Flange Assy Rough Bore
PX60TBS	602,802*	010471	011106	See Page PT1-30	PX60TBS	010510
PX70TBS	603	010472	011107		PX70TBS	010511
	802B,802C	010473			PX80TBS	010512
PX80TBS	603,803	010474	011108		PX90TBS	010513
	604,804				PX100TBS	010514
PX90TBS	804	010475	011109		PX110TBS	010515
PX100TBS	804	010476	011110		PX120TBS	010516
PX110TBS	606,806	010477	011111		PX140TBS	010524
	608	010478			PX160TBS	010531
PX120TBS	606,806	010479	011112		PX200TBS	010532
	608,808	010480			PX240TBS	010525
PX140TBS	608,808	008980	011114		PX280TBS	010526
	610,810	008981				
	612,812	008982				
PX160TBS	610,810	008983	011117			
	612,812	008984				
	614	008985				
PX200TBS	612,812	008986	011120			
	614,814	008987				
	616,816	008988				
	618,818	008989				
PX240TBS	818	008990	011124			
	620	008991				
PX280TBS	622	008992	011457			
	624	008993				

**Complete coupling consists of:**

- (1) TS Flange Assembly,**
- (1) BS Flange Assembly, and**
- (1) Element**

\* Key furnished for shallow keyways.

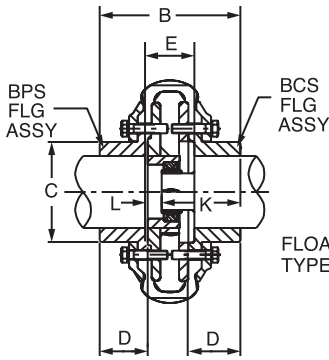
+ Part numbers are finished bore flanges to fit mill motor sizes listed.

FEATURES/BENEFITS PAGE PT1-2	SPECIFICATION/HOW TO ORDER PAGE PT1-3	MODIFICATION/ACCESSORIES PAGE PT1-79	ENGINEERING/TECHNICAL PAGE PT1-81
---------------------------------	--	---	--------------------------------------

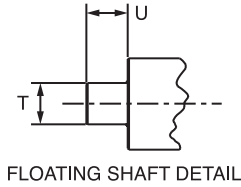


## SELECTION/DIMENSIONS

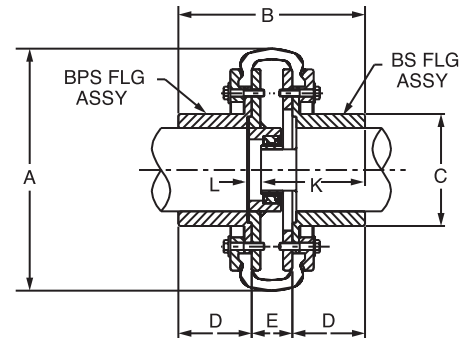
### Floating Shaft, Type BBPS



PX60-120 BBPS



FLOATING SHAFT  
TYPE BBPS



PX140-320 BBPS

Size	Min. Bore	Max. Bore	HP/100	Torque (In-Lbs)	Max RPM	A	B	C	D	E	K	L	T	U	Weight (Lbs)	Inertia (Lb-Ft <sup>2</sup> )
PX60BBPS	none	1-1/2	2.86	1,800	4000	6.50	4.28	2.38	1.50	1.78	2.45	0.58	.624/.6225	1.28	9.8	0.21
PX70BBPS	none	2-1/8	3.49	2,200	3600	7.38	5.00	2.94	1.75	2.06	3.05	0.48	.999/.9975	1.58	14.6	0.32
PX80BBPS	none	2-9/16	5.72	3,605	3100	8.38	5.50	3.69	2.00	2.00	3.30	0.45	.999/.9975	1.58	26.9	0.79
PX90BBPS	none	2-3/4	7.15	4,502	2800	9.25	6.03	4.13	2.25	2.09	3.67	0.39	1.249/1.2475	1.70	29.0	1.4
PX100BBPS	none	3-1/4	5.85	5,402	2600	10.00	6.97	4.94	2.63	2.16	4.13	0.44	1.249/1.2475	1.72	40.1	2.5
PX110BBPS	none	3-15/16	12.30	7,750	2300	11.00	7.56	5.44	3.00	2.06	4.44	0.38	1.249/1.2475	1.69	51.0	4.2
PX120BBPS	none	4	20	12,605	2100	12.38	8.25	5.81	3.25	2.44	4.89	0.45	1.499/1.497	1.98	75.7	7.0
PX140BBPS	2-1/4	4-1/2	44	27,590	1840	14.13	9.19	7.00	3.88	2.44	5.69	0.44	1.499/1.497	2.00	140.2	16.4
PX160BBPS	2-1/2	6	60	37,800	1560	16.63	12.94	8.50	5.13	3.06	7.25	0.75	1.499/1.497	2.94	230.8	39.6
PX200BBPS	2-7/8	6-3/4	131	82,500	1300	20.00	15.56	9.38	6.13	3.69	8.78	0.84	1.999/1.997	2.84	364.5	76.9
PX240BBPS	4	7-1/2	240	151,200	1080	24.13	14.16	10.00	5.13	4.28	8.06	1.16	1.999/1.997	3.12	529.0	188.1
PX280BBPS	4-7/16	9	480	302,200	910	28.50	18.47	12.00	7.13	4.59	10.22	1.31	1.999/1.997	3.28	877.0	440.8
PX320BBPS	5-1/2	11	719	453,000	810	32.50	20.75	14.00	8.13	4.88	11.38	1.44	1.999/1.997	3.44	1181.0	709.6

**Complete coupling consists of:**

- (1) BCS or BS Flange Assembly  
(depending on size of coupling),
- (1) BPS Flange Assembly, and
- (1) Element.

**BCS Flange Assembly consists of:**

1. External Clamp Ring
2. Internal Clamp Ring
3. BCS Flange

**BPS Flange Assembly consists of:**

1. External Clamp Ring
2. Piloted Internal Clamp Ring
  - a. Includes floating shaft bearing assembly
3. BS Flange

**PX60BBPS - PX320BBPS Part Numbers**

Coupling Size	BCS Flange Assembly	BPS Flange Assembly	Standard Element
PX60BBPS	010658	010657	011106
PX70BBPS	010660	010659	011107
PX80BBPS	010189	010190	011108
PX90BBPS	010191	010192	011109
PX100BBPS	010193	010194	011110
PX110BBPS	010599	010598	011111
PX120BBPS	010195	010196	011112

Coupling Size	BS Flange Assembly	BPS Flange Assembly	Standard Element
PX140BBPS	010530	011714	011114
PX160BBPS	010531	011715	011117
PX200BBPS	010532	011716	011120
PX240BBPS	010533	011717	011124
PX280BBPS	010528	011718	011457
PX320BBPS	010529	011719	011463

FEATURES/BENEFITS PAGE PT1-2	SPECIFICATION/HOW TO ORDER PAGE PT1-3	MODIFICATION/ACCESSORIES PAGE PT1-79	ENGINEERING/TECHNICAL PAGE PT1-81
---------------------------------	--	---	--------------------------------------