



## FEATURES/BENEFITS



### GRID-LIGN



The basic GRID-LIGN coupling consists of two steel shaft hubs, a high strength spring steel tapered grid element, two seals and a cover assembly.

Misalignment and end float are accommodated by the sliding action of the grid in the lubricated hub grooves.

Standard GRID-LIGN couplings operate reliably between  $-35^{\circ}$  and  $+210^{\circ}$ F. They can accept angular misalignment to  $1/2^{\circ}$ , parallel misalignment to  $.012''$ , and end float to  $.375''$ . Speed capability goes as high as 6000 RPM.

GRID-LIGN couplings can be mounted with TAPER-LOCK bushings on shafts from  $1/2''$  to  $3-15/16''$ . Straight bore hubs go up to 7" bore.

#### Flexible Tapered Element

- Isolates vibration, cushions shock loads
- Allows uniform contact during light, normal and shock loading conditions
- Lengthens machine life
- Constructed from tempered spring steel for long life

#### High Torque Capability

- Torque ranges from 422 to 230,000 in. lbs.
- Steel components allow for compact size

#### Interchangeability

- Stock GRID-LIGN coupling configurations include the standard full-flex design in vertically or horizontally split covers, half spacers and full spacers
- Interchangeable with other taper grid style couplings

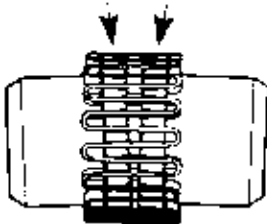


**GRID-LIGN**

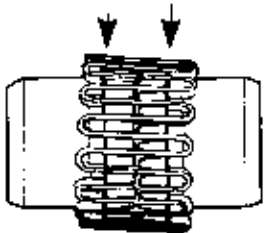
**STYLE, SIZES AND RATINGS CHART**

Coupling Styles	Number of Sizes	Maximum Ratings		
		Bore	Torque	Speed
T10 Standard Coupling H Cover	13	7.0"	230,000	6000
T20 Standard Coupling V Cover	10	5.0"	75,000	6000
T31 Full Spacer	8	4.25"	30,000	3600
T35 Half Spacer	8	4.25"	30,000	3600

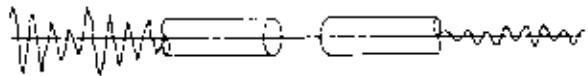
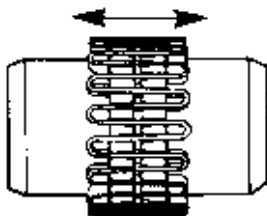
**Angular Misalignment**



**Parallel Misalignment**



**End Float**



**TAPERED GRID DESIGN**

- Tapered grid element, combined with the contoured hub grooves, transmit torque efficiency while accommodating misalignment and cushioning shock loads
- Grid element made from high strength steel that is quenched and tempered for long life



# SPECIFICATION/HOW TO ORDER/NOMENCLATURE



## GRID-LIGN

### SPECIFICATION

GRID-LIGN Couplings are tapered grid style with hubs, grids and covers which are interchangeable with other industry standard tapered grid couplings. Grid hubs are machined steel, protected with an anti-rust coating. Hubs have optional methods of attachment to the shaft including but not limited to: clearance fit, interference fit or TAPER-LOCK bushings. Clearance fits and interference fits are supplied with an industry standard keyway. Clearance fits are supplied with two set screws, one over the key and one at 65°. The grid element is made of high strength spring steel, heat treated and shot peened to enhance strength and durability.

The coupling is designed and manufactured such that the grid member can be replaced without disturbing the connected equipment and without the requirement for realignment. All Grid-Lign Couplings are fitted with covers to retain lubrication and prevent the entry of abrasives and contaminants. Covers are of a two piece design to facilitate installation and are available as axial split or radial split. DODGE will provide recommendations for types and amounts of lubricant suitable for operation in ambient temperatures from -35°F to +210°F.

Spacer Couplings consist of two shaft hubs and a center assembly consisting of two spacer hubs, one grid and cover. The center assembly is readily removable to facilitate maintenance on pumps or other connected equipment. The center assembly must be replaceable without disturbing the coupled equipment and without realignment.

### HOW TO ORDER

Standard couplings consist of:  
 (2) Shaft Hubs  
 (1) T10 (or T20) Grid & Cover Assembly

Spacer couplings consists of:  
 T31 Spacer  
 (2) "T" Shaft Hubs  
 (2) Spacer Hubs  
 (1) T10 Grid & Cover Assembly  
 T35 Half Spacer  
 (1) Shaft Hub  
 (1) Spacer Hub  
 (1) "T" Shaft Hub  
 (1) T10 Grid & Cover Assembly

### NOMENCLATURE

	<p><b>Size</b> _____ <b>1020</b> _____ <b>T10</b></p>
	<p><b>Coupling Type</b> _____</p> <p>T10 = Horizontal Split Cover          T20 = Vertical Split Cover          T31 = Full Spacer          T35 = Half Spacer</p>



## GRID-LIGN

MOTOR			GRID-LIGN STRAIGHT BORE TYPES T10 & T20			GRID-LIGN TAPER-LOCK TYPES T10 & T20			GRID-LIGN STRAIGHT BORE TYPES T31 & T35			GRID-LIGN STRAIGHT BORE TYPES T31 & T35		
H.P.	FRAME	SHAFT DIA.	SERVICE FACTOR			SERVICE FACTOR			SERVICE FACTOR			SERVICE FACTOR		
			LIGHT 1.0	MEDIUM 1.5	HEAVY 2.0	LIGHT 1.0	MEDIUM 1.5	HEAVY 2.0	LIGHT 1.0	MEDIUM 1.5	HEAVY 2.0	LIGHT 1.0	MEDIUM 1.5	HEAVY 2.0
1	143T	0.875	1020T	1020T	1020T	1030T	1030T	1030T	1020T	1020T	1020T	1020T	1020T	1020T
1.5	145T	0.875	1020T	1020T	1020T	1030T	1030T	1030T	1020T	1020T	1020T	1020T	1020T	1020T
2	145T	0.875	1020T	1020T	1020T	1030T	1030T	1030T	1020T	1020T	1020T	1020T	1020T	1020T
3	182T	1.125	1020T	1020T	1020T	1030T	1030T	1030T	1020T	1020T	1020T	1020T	1020T	1020T
5	184T	1.125	1020T	1020T	1020T	1030T	1030T	1030T	1020T	1020T	1020T	1020T	1020T	1020T
7.5	213T	1.375	1030T	1030T	1030T	1040T	1040T	1040T	1020T	1020T	1030T	1040T	1040T	1040T
10	215T	1.375	1030T	1030T	1030T	1040T	1040T	1040T	1020T	1030T	1030T	1040T	1040T	1040T
15	254T	1.625	1040T	1040T	1040T	1060T	1060T	1060T	1030T	1030T	1030T	1050T	1050T	1050T
20	256T	1.625	1040T	1040T	1040T	1060T	1060T	1060T	1030T	1030T	1040T	1050T	1050T	1050T
25	284T	1.875	1050T	1050T	1050T	1070T	1070T	1070T	1040T	1040T	1040T	1060T	1060T	1060T
30	326T	1.875	1050T	1050T	1050T	1070T	1070T	1070T	1040T	1040T	1050T	1060T	1060T	1060T
	286TS	1.625	1040T	1040T	1040T	1060T	1060T	1060T	1040T	1040T	1050T	1050T	1050T	1050T
40	324T	2.125	1060T	1060T	1060T	1070T	1070T	1070T	1040T	1050T	1050T	1060T	1060T	1060T
	324TS	1.875	1050T	1050T	1050T	1070T	1070T	1070T	1040T	1050T	1050T	1060T	1060T	1060T
50	326T	2.125	1060T	1060T	1060T	1070T	1070T	1070T	1040T	1050T	1050T	1060T	1060T	1060T
	326TS	1.875	1050T	1050T	1050T	1070T	1070T	1070T	1040T	1050T	1050T	1060T	1060T	1060T
60	364T	2.375	1070T	1070T	1070T	1080T	1080T	1080T	1050T	1050T	1060T	1070T	1070T	1070T
	364TS	1.875	1050T	1050T	1050T	1070T	1070T	1070T	1050T	1050T	1060T	1060T	1060T	1060T
75	365T	2.375	1070T	1070T	1070T	1080T	1080T	1080T	1050T	1060T	1060T	1070T	1070T	1070T
	365TS	1.875	1060T	1060T	1060T	1070T	1070T	1070T	1050T	1060T	1060T	1060T	1060T	1060T
100	404T	2.875	1080T	1080T	1080T	1090T	1090T	1090T	1060T	1060T	1070T	1090T	1090T	1090T
	404TS	2.125	1060T	1060T	1060T	1070T	1070T	1070T	1050T	1060T	1070T	1060T	1060T	1070T
125	405T	2.875	1080T	1080T	1080T	1090T	1090T	1090T	1060T	1070T	1080T	1090T	1090T	1090T
	405TS	2.125	1060T	1070T	1080T	1070T	1070T	1080T	1060T	1070T	1080T	1060T	1070T	1080T
	444T	3.375	1090T	1090T	1090T	1110T	1110T	1110T	1080T	1080T	1080T	1100T	1100T	1100T
	444TS	2.375	1070T	1070T	1080T	1080T	1080T	1080T	1060T	1070T	1080T	1070T	1070T	1080T
150	444/5T	3.375	1090T	1090T	1090T	1110T	1110T	1110T	1080T	1080T	1080T	1100T	1100T	1100T
	444/5TS	2.375	1070T	1070T	1080T	1080T	1080T	1080T	1060T	1070T	1080T	1070T	1070T	1080T
200	444T	3.375	1090T	1090T	1090T	1110T	1110T	1110T	1080T	1080T	1080T	1100T	1100T	1100T
	444TS	2.375	1070T	1080T	1080T	1080T	1080T	1080T	1070T	1080T	1080T	1070T	1080T	1080T

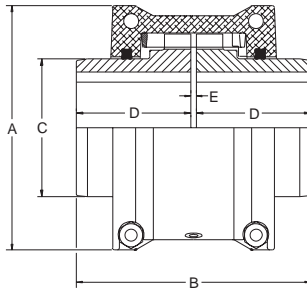


# SELECTION/DIMENSIONS

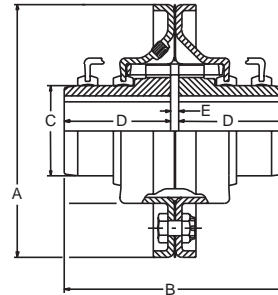


## GRID-LIGN

### STANDARD, STRAIGHT BORE AND TAPER-LOCK DIMENSIONS/RATINGS



TYPE T10



TYPE T20

Coupling Size	Straight Bore			TAPER-LOCK		HP/100		TORQUE		Max.RPM	
	Min. Bore	Maximum Bore		Min. Bore	Max. Bore	Str. Hub	T-L Hub	Str. Hub (In-Lbs)	T-L Hub (In-Lbs)	T10	T20
		Sq. Key	Rec. Key								
1020T	0	1-1/8	1-3/16	N/A	N/A	0.67	-	422	-	4500	6000
1030T	0	1-3/8	1-7/16	1/2	1-1/8	1.90	1.90	1200	1200	4500	6000
1040T	0	1-5/8	1-3/4	1/2	1-1/8	3.20	2.10	2000	1300	4500	6000
1050T	0	1-7/8	2	1/2	1-1/4	5.60	5.60	3500	3500	4500	6000
1060T	0	2-1/8	2-1/4	1/2	1-11/16	8.70	6.80	5500	4300	4350	6000
1070T	0	2-1/2	2-11/16	1/2	2-1/8	13.00	11.30	8000	7150	4125	5500
1080T	0	3	3-1/4	3/4	2-11/16	26.00	17.90	16500	11300	3600	4750
1090T	0	3-1/2	3-3/4	15/16	3-1/4	48.00	38.10	30000	24000	3600	4000
1100T	0	4	4-1/4	15/16	3-1/4	80.00	38.10	50500	24000	2440	3250
1110T	0	4-1/2	4-5/8	1-13/16	3-15/16	120.00	71.10	75000	44800	2250	3000
1120T	2-3/8	5	5-3/8	*	*	175.00	*	110000	*	2025	*
1130T	2-5/8	6	6-1/2	*	*	254.00	*	160000	*	1800	*
1140T	2-5/8	7	7-1/4	*	*	365.00	*	230000	*	1650	*

Coupling Size	A		B		C	D		E	Weight (Lbs.) (1)		Inertia (Lb. Ft. <sup>2</sup> ) (2)
	T10	T20	Str. Hub	T-L Hub		Str. Hub	T-L Hub		T10	T20	
	1020T	3.47	4.38	3.89		N/A	1.56		1.88	N/A	
1030T	3.88	4.75	3.89	3.39	1.94	1.88	1.63	0.13	3.80	4.00	0.05
1040T	4.22	5.06	4.13	3.36	2.25	2.00	1.63	0.13	4.70	4.90	0.08
1050T	5.09	5.81	4.88	3.89	2.63	2.38	1.88	0.13	7.30	7.50	0.17
1060T	5.47	6.38	5.13	4.38	3.00	2.50	2.13	0.13	11.00	11.00	0.28
1070T	5.92	6.81	6.13	4.38	3.44	3.00	2.13	0.13	13.80	14.00	0.44
1080T	6.92	7.88	7.13	5.39	4.13	3.50	2.63	0.13	25.10	25.60	1.07
1090T	7.70	9.13	7.88	6.39	4.88	3.88	3.13	0.13	35.10	35.60	1.65
1100T	9.88	10.50	9.69	7.19	5.59	4.75	3.50	0.19	62.60	63.20	3.70
1110T	10.63	11.25	10.19	7.45	6.31	5.00	3.63	0.19	78.50	79.00	5.60
1120T	12.13	*	12.00		7.06	5.88	*	0.25	114.00		10.80
1130T	13.63	*	13.00		8.56	6.38	*	0.25	165.00		20.20
1140T	15.13	*	14.75		10.00	7.25	*	0.25	236.00		36.40

(1) Weight of complete coupling at maximum bore

(2) Inertia of complete coupling at maximum bore

\* Priced on Request

FEATURES/BENEFITS PAGE PT1-42	EASY SELECTION PAGE PT1-45	MODIFICATION/ACCESSORIES PAGE PT1-67	ENGINEERING/TECHNICAL PAGE PT1-69
----------------------------------	-------------------------------	---	--------------------------------------



# SELECTION/DIMENSIONS



## GRID-LIGN

### TYPE T10 AND T20 GRID-LIGN COUPLINGS STANDARD STRAIGHT BORE HUBS, TAPER-LOCK - PART NUMBERS

Size	Clearance Fit								Interference Fit				
	1020T	1030T	1040T	1050T	1060T	1070T	1080T	1090T	1100T	1110T	1120T	1130T	1140T
T10 Grid/Cover	• 006750	• 006751	• 006752	• 006753	• 006754	• 006755	• 006756	• 006757	• 006758	• 006759	• 006760	• 006761	• 006762
T20 Grid/Cover	• 006765	• 006766	• 006767	• 006768	• 006769	• 006770	• 006771	• 006772	• 006773	• 006774	*	*	*
Grid	• 006275	• 006276	• 006277	• 006278	• 006279	• 006280	• 006281	• 006282	• 006283	• 006284	*	*	*
T10 Cover	• 006250	• 006251	• 006252	• 006253	• 006254	• 006255	• 006256	• 006257	• 006258	• 006259	*	*	*
T20 Cover	• 006260	• 006261	• 006262	• 006263	• 006264	• 006265	• 006266	• 006267	• 006268	• 006269			
T-L Hubs	N/A	006318	006319	006320	006321	006322	006323	006324	006325	006326	*	*	*
Bushing Size	N/A	1108	1108	1215	1615	2012	2525	3030	3030	3535			
Reborable	• 006290	• 006291	• 006292	• 006293	• 006294	• 006295	• 006296	• 006297	• 006298	• 006299	• 006300	• 006301	• 006245
Finished Bore Hub													
1/2	• 006580												
5/8	• 006581	• 006585											
3/4	• 006582	• 006586											
7/8	• 006583	• 006587	• 006592	• 006576									
15/16	• 006571	• 006572	• 006950	• 006953	• 006957								
1	• 006584	• 006588	• 006593	• 006577									
1-1/8	• 006793	• 006589	• 006594	• 006599	• 006578								
1-3/16			• 006951	• 006954	• 006958								
1-1/4		• 006590	• 006595	• 006600	• 006579	• 006629							
1-3/8		• 006591	• 006596	• 006601	• 006606	• 006640							
1-7/16			• 006952	• 006955	• 006643	• 006961	• 006642						
1-1/2			• 006597	• 006602	• 006607	• 006641	006539	006540					
1-5/8			• 006598	• 006603	• 006608	• 006612							
1-11/16				• 006956	• 006959	006962							
1-3/4				• 006604	• 006609	• 006613							
1-7/8				• 006605	• 006610	• 006614	006573	006541					
1-15/16					• 006960	006963							
2					006794	• 006615	• 006620						
2-1/8					006611	• 006616	• 006621	• 006656					
2-3/16						006964	006966						
2-1/4						• 006617	• 006622	• 006657					
2-3/8						• 006618	• 006623	• 006804					
2-7/16						006965	006967						
2-1/2						• 006619	• 006624	• 006795	006460				
2-5/8							• 006625	• 006796	006461				
2-11/16							006968	• 006790	006473				
2-3/4							• 006626	• 006797	006462				
2-7/8							• 006627	• 006798	• 006463				
2-15/16							006969	• 006791	006474				
3							• 006628	• 006799	006464	006486			
3-1/8								• 006800	006465	006487			
3-1/4								• 006801	006466	006488			
3-3/8								• 006802	006467	• 006489			
3-7/16								• 006792	006475	006484			
3-1/2								• 006803	• 006468	006490			
3-5/8									006469	006491			
3-3/4								006480	006470	006492			
3-7/8									006471	006493			
3-15/16									006476	006485			
4									006472	006494			

• Stock Sizes      \*Priced on request  
**Note: For TAPER-LOCK design, TAPER-LOCK bushings must be ordered separately**

Complete coupling consists of: (2) Hubs, TAPER-LOCK or straight bore, and (1) Grid & cover assy.

FEATURES/BENEFITS PAGE PT1-42	EASY SELECTION PAGE PT1-45	MODIFICATION/ACCESSORIES PAGE PT1-67	ENGINEERING/TECHNICAL PAGE PT1-69
----------------------------------	-------------------------------	---	--------------------------------------

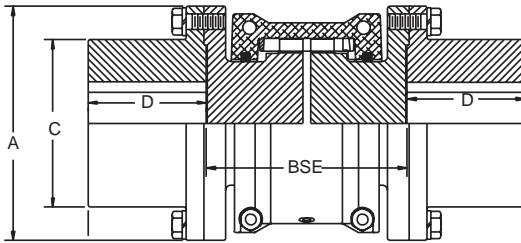


# SELECTION/DIMENSIONS

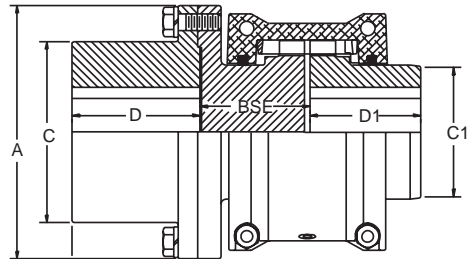


## GRID-LIGN

### SPACER, STRAIGHT BORE & TAPER-LOCK DIMENSIONS/RATINGS



TYPE T31



TYPE T35

Coupling Size	Straight Bore			TAPER-LOCK		HP/100(5)		TORQUE (5)		Max.RPM	T31 Weight*	
	Min. Bore	Maximum Bore		Min .Bore	Max .Bore	Str. Hub	T-L Hub	Str. Hub (In-Lbs)	T-L Hub (In-Lbs)		(1)	(2)
		Sq. Key	Rec. Key									
1020T	---	1-3/8	1-7/16	1/2	1-1/8	0.67	0.67	422	422	3600	8.1	.54
1030T	---	1-5/8	1-3/4	1/2	1-1/8	1.90	1.90	1200	1200	3600	11.1	.83
1040T	---	2-1/8	2-1/4	1/2	1-7/16	3.20	3.20	2000	2000	3600	18.0	1.11
1050T	---	2-3/8	2-1/2	1/2	1-11/16	5.60	5.60	3500	3500	3600	26.6	1.52
1060T	---	2-7/8	3-1/8	1/2	2-1/8	8.70	8.70	5500	5500	3600	42.7	1.98
1070T	---	3-1/8	3-1/4	3/4	2-11/16	13.00	13.00	8000	8000	3600	52.3	2.60
1080T	---	3-1/2	3-3/4	3/4	2-11/16	26.00	17.90	16,500	11,300	3600	84.8	3.70
1090T	---	4	4-1/4	15/16	3-1/4	48.00	38.10	30,000	24,000	3600	130.0	5.20

Coupling Size	A	C	C1	D	D1	T31 BSE		T35 BSE		T31 Inertia (Lb. Ft. <sup>2</sup> )	
						Min.	Max.	Min.	Max.	(3)	(4)
1020T	3.38	2.06	1.56	1.38	1.88	3.50	8.00	1.78	4.03	0.07	0.001
1030T	3.69	2.34	1.94	1.63	1.88	3.50	8.50	1.78	4.28	0.11	0.003
1040T	4.44	3.11	2.25	2.13	2.00	3.50	8.50	1.78	4.28	0.21	0.005
1050T	4.94	3.44	2.63	2.38	2.38	4.38	8.50	2.22	4.28	0.51	0.010
1060T	5.69	4.06	3.00	2.88	3.50	5.00	13.00	2.53	6.53	0.88	0.020
1070T	6.00	4.31	3.44	3.13	3.00	5.00	13.00	2.53	6.53	1.23	0.030
1080T	7.00	4.81	4.13	3.50	3.50	7.25	16.00	3.66	8.03	2.49	0.060
1090T	8.25	5.63	4.88	4.00	3.88	7.25	16.00	3.66	8.03	5.01	0.110

(1) Weight of T31 coupling at maximum bore

(2) Weight adder per inch

(3) Inertia of T31 coupling at maximum bore

(4) Inertia adder per inch

(5) HP/100 and TORQUE ratings for T-L style shaft hubs apply for "T" shaft hubs. See page PT1-46 for standard T-L style shaft hubs

\* For weight and inertia of T35 use 1/2 of T31 value (this page) and 1/2 T10 value (page PT1-46)



## GRID-LIGN

### TYPE T31 AND T35 GRID-LIGN COUPLINGS, SPACER STRAIGHT BORE "T" HUBS, TAPER-LOCK "T" HUBS, GRIDS AND COVERS - PART NUMBERS

Size	1020T	1030T	1040T	1050T	1060T	1070T	1080T	1090T
T10Grid/Cover	• 006750	• 006751	• 006752	• 006753	• 006754	• 006755	• 006756	• 006757
Grid	• 006275	• 006276	• 006277	• 006278	• 006279	• 006280	• 006281	• 006282
T10 Cover	• 006250	• 006251	• 006252	• 006253	• 006254	• 006255	• 006256	• 006257
T-L Hubs	• 006328	• 006329	• 006330	• 006331	• 006332	• 006333	• 006334	• 006335
Bushing Size	1108	1108	1310	1615	2012	2525	2525	3030
Reborable	• 006305	• 006306	• 006307	• 006308	• 006309	• 006310	• 006311	• 006312
Finished Bore Hubs								
5/8	• 006903							
7/8	• 006904	• 006907	• 006399					
1	• 006905	• 006908	• 006970	• 006984				
1-1/8	• 006906	• 006909	• 006971	• 006985				
1-1/4	• 006396	• 006397	• 006400	006402	• 006411			
1-3/8	• 006560	• 006894	• 006972	• 006986	• 006412			
1-7/16				• 006456				
1-1/2				006481	• 006413			
1-5/8		• 006398	• 006973	• 006987	• 006414	• 006417	• 006433	
1-3/4			• 006974	• 006988	• 006990	• 006418		
1-7/8			• 006564	• 006989	• 006991	• 006419	• 006434	• 006440
2				• 006457	006482			
2-1/8			• 006401	• 006565	• 006992	• 006429	• 006435	
2-3/8				• 006566	• 006567	• 006430	• 006458	• 006451
2-7/16					• 006415		006550	
2-5/8					• 006416		• 006436	
2-7/8					• 006568	• 006431	• 006437	• 006452
3						• 006432	• 006438	• 006453
3-3/8							• 006439	• 006454
3-7/8							• 006455	• 006455

• Stock Sizes

Complete spacer couplings consists of:

- T31 Spacer -**
- (2) "T" Shaft Hubs
  - (2) Spacer Hubs (Page PT1-50)
  - (1) T10 Grid & Cover Assembly
- T35 Half Spacer -**
- (1) Shaft Hub (Page PT1-47)
  - (1) Spacer Hub (Page PT1-51)
  - (1) "T" Shaft Hub
  - (1) T10 Grid & Cove Assembly

**NOTE:** For TAPER-LOCK designs, TAPER-LOCK bushings must be ordered separately

FEATURES/BENEFITS PAGE PT1-42	EASY SELECTION PAGE PT1-45	MODIFICATION/ACCESSORIES PAGE PT1-67	ENGINEERING/TECHNICAL PAGE PT1-69
----------------------------------	-------------------------------	---	--------------------------------------





# SELECTION/DIMENSIONS



## GRID-LIGN

### TYPE T31 - FULL SPACER ASSEMBLIES

B.S.E. Dimensions (in.)	Coupling Size															
	1020T		1030T		1040T		1050T		1060T		1070T		1080T		1090T	
	Spacer Assembly		Spacer Assembly		Spacer Assembly		Spacer Assembly		Spacer Assembly		Spacer Assembly		Spacer Assembly		Spacer Assembly	
	P/N	Qty.	P/N	Qty.	P/N	Qty.	P/N	Qty.	P/N	Qty.	P/N	Qty.	P/N	Qty.	P/N	Qty.
3.5	006497	2	006504	2	006516	2										
3.94	006497	1	006504	1	006516	1										
	006498	1	006505	1	006517	1										
4.25	006497	1	006504	1	006516	1										
	006499	1	006506	1	006518	1										
4.38	006498	2	006505	2	006517	2	006533	2								
4.69	006498	1	006505	1	006517	1	006533	1								
	006499	1	006506	1	006518	1	006534	1								
5	006499	2	006506	2	006518	2	006534	2	006544	2	006553	2				
5.22					006516	1										
					006519	1										
5.38			006504	1	006516	1										
			006507	1	006520	1										
5.66					006517	1	006533	1								
					006519	1	006535	1								
5.81			006505	1	006517	1	006533	1								
			006507	1	006520	1	006536	1								
5.97					006518	1	006534	1								
					006519	1	006535	1								
6.12			006506	1	006518	1	006534	1	006544	1	006553	1				
			006507	1	006520	1	006536	1	006545	1	006554	1				
6.94					006519	2	006535	2								
7.09					006519	1	006535	1								
					006520	1	006536	1								
7.25			006507	2	006520	2	006536	2	006545	2	006554	2	006561	2	006569	2
8.00																
8.59													006561	1		
													006562	1		
8.62									006544	1	006553	1				
									006546	1	006555	1				
8.88																
9.75									006545	1	006554	1	006561	1	006569	1
									006546	1	006555	1	006563	1	006570	1
9.94													006562	2		
11.09													006562	1		
													006563	1		
12.25									006546	2	006555	2	006563	2	006570	2



**GRID-LIGN**

**TYPE T35 - HALF SPACER ASSEMBLIES**

B.S.E. Dimensions (in.)	Coupling Size															
	1020T		1030T		1040T		1050T		1060T		1070T		1080T		1090T	
	Spacer Assembly		Spacer Assembly		Spacer Assembly		Spacer Assembly		Spacer Assembly		Spacer Assembly		Spacer Assembly		Spacer Assembly	
	P/N	Qty.	P/N	Qty.	P/N	Qty.	P/N	Qty.	P/N	Qty.	P/N	Qty.	P/N	Qty.	P/N	Qty.
1.78	006497	1	006504	1	006516	1										
2.22	006498	1	006505	1	006517	1	006533	1								
2.53	006499	1	006506	1	006518	1	006534	1	006544	1	006553	1				
3.50					006519	1	006535	1								
3.66			006507	1	006520	1	006536	1	006545	1	006554	1	006561	1	006569	1
4.06																
5.00													006562	1		
6.16									006546	1	006555	1	006563	1	006570	1

**T31 - Full Spacer**



**T35 - Half Spacer**

