



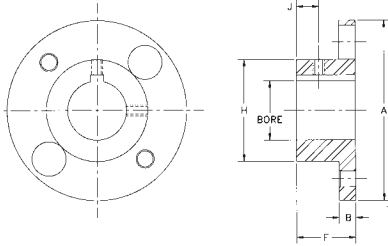
4 BOLT COUPLING HUB OPTIONS

TB Wood's

TO ORDER A COMPLETE COUPLING, ORDER TWO HUBS OF ANY TYPE AND A COUPLING (SPACER) SUB ASSEMBLY FOR THE REQUIRED COUPLING TYPE. ALL DIMENSIONS SHOWN IN INCHES.

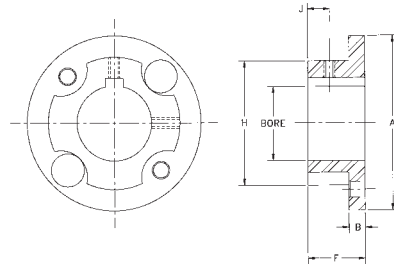
AJ STANDARD HUBS

PROVIDED WITH STRAIGHT BORE AND KEYWAY
SOLID HUBS AVAILABLE FROM STOCK



AZ OVERSIZE BORE HUBS

PROVIDED WITH STRAIGHT BORE AND KEYWAY

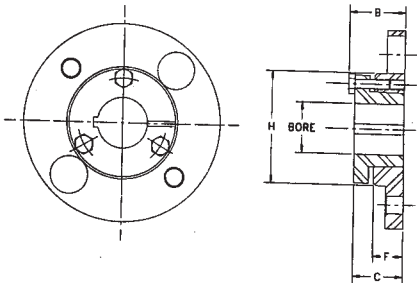


SIZE	MAX BORE	A	B	F	H	J	STD SET SCREW SIZE
05	0.87	2.65	0.25	1.00	1.30	0.38	10-24 UNC
10	1.25	3.19	0.30	1.00	1.80	0.38	1/4-20 UNC
15	1.37	3.65	0.35	1.13	2.00	0.41	1/4-20 UNC
20	1.62	4.08	0.35	1.32	2.40	0.50	1/4-20 UNC
25	2.00	4.95	0.45	1.62	2.80	0.63	5/16-18 UNC
30	2.38	5.63	0.55	1.88	3.30	0.69	5/16-18 UNC
35	2.88	6.63	0.55	2.25	4.15	0.88	1/2-13 UNC
40	3.25	7.64	0.65	2.50	4.65	0.94	1/2-13 UNC
45	3.75	8.43	0.65	3.00	5.40	1.20	1/2-13 UNC

SIZE	MAX BORE	A	B	F	H	J	STD SET SCREW SIZE
05	1.13	2.65	0.25	1.00	1.88	0.38	10-24 UNC
10	1.63	3.19	0.30	1.00	2.37	0.38	1/4-20 UNC
15	1.88	3.65	0.35	1.13	2.69	0.41	1/4-20 UNC
20	2.13	4.08	0.35	1.32	3.13	0.50	1/4-20 UNC
25	2.38	4.95	0.45	1.62	3.75	0.63	5/16-18 UNC
30	2.88	5.63	0.55	1.88	4.25	0.69	5/16-18 UNC
35	3.75	6.63	0.55	2.25	5.25	0.88	1/2-13 UNC
40	4.00	7.64	0.65	2.50	6.02	0.94	1/2-13 UNC
45	4.63	8.43	0.65	3.00	6.75	1.20	1/2-13 UNC

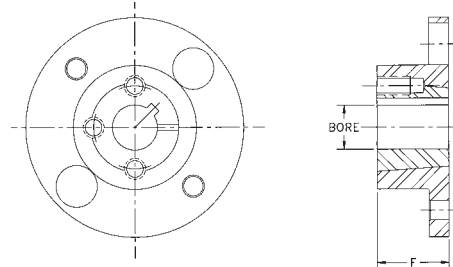
QD BORED HUBS

MATERIAL CLASS A OR B ONLY - CLASS A AVAILABLE FROM STOCK



HUBS FOR TAPER LOCK BUSHINGS

AVAILABLE MTO ONLY



CPLG SIZE	BUSH. SIZE	BUSH. TQ. LB*IN	MAX BORE	B	C	F	H	BOLT SIZE UNC
15	JA	1000	1-1/4	1.17	1.00	.56	2.00	#10
20	JA	1000	1-1/4	1.17	1.00	.56	2.40	#10
25	SH	3500	1-11/16	1.50	1.25	.75	2.80	1/4
30	SD	5000	2	2.06	1.81	1.25	3.30	1/4
35	SK	7000	2-5/8	2.19	1.87	1.25	4.15	5/16
40	SF	11000	2-15/16	2.38	2.06	1.37	4.65	3/8

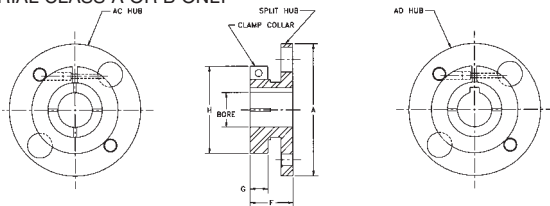
CPLG SIZE	REGULAR MOUNT				REVERSE MOUNT			
	BUSH SIZE	BUSH TQ LB*IN	MAX BORE	F	BUSH SIZE	BUSH TQ LB*IN	MAX BORE	F
15	N/A	1108	1300	1.12	0.87
20	1108	1300	1.12	0.87	1215	3550	1.25	1.50
25	1215	3550	1.25	1.50	1310	3850	1.37	1.00
30	1310	3850	1.37	1.00	1615	4300	1.62	1.50
35	2012	7150	2.00	1.25	2517	11600	2.50	1.75
40	2525	11300	2.50	2.50	2525	11300	2.50	2.50

AC/AD CLAMPING HUBS

AC HUBS PROVIDED WITHOUT KEYWAY

AD HUBS PROVIDED WITH KEYWAY

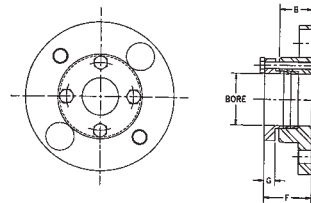
MATERIAL CLASS A OR B ONLY



AL LOCK ELEMENT HUBS

THESE HUBS USE RINGFEDER TAPERED LOCKING ELEMENTS

MATERIAL CLASS A OR B ONLY



SIZE	MAX BORE		A	F	G	H	SCREW SIZE
	AC	AD					
05	1.00	0.87	2.65	1.13	.50	2.06	1/4-20 UNC
10	1.00	0.87	3.19	1.18	.50	2.06	1/4-20 UNC
	1.50	1.25		1.36	.69	2.75	5/16-18 UNC
15	1.00	0.87	3.65	1.27	.50	2.06	1/4-20 UNC
	1.75	1.37		1.46	.69	3.00	5/16-18 UNC
20	1.31	1.00	4.08	1.32	.55	2.38	1/4-20 UNC
	2.12	1.62		1.52	.75	3.50	3/8-16 UNC
25	2.13	1.62	4.95	1.62	.64	3.50	5/16-18 UNC
	2.50	1.87		1.86	.88	4.00	3/8-16 UNC

SIZE	HUB TYPE	BORE SIZE-mm		B	F	G	SCREW SIZE
		MIN	MAX				
05	AJ	6	13	1.00	1.32	.32	10-32 UNF
	AZ	14	19	1.00	1.42	.42	1/4-28 UNF
10	AJ	12	18	1.00	1.42	.42	1/4-28 UNF
	AZ	19	30	1.00	1.42	.42	1/4-28 UNF
15	AJ	12	22	1.13	1.55	.42	1/4-28 UNF
	AZ	24	35	1.13	1.55	.42	1/4-28 UNF
20	AJ	22	30	1.32	1.78	.42	1/4-28 UNF
	AZ	32	42	1.32	1.83	.51	5/16-24 UNF
25	AJ	22	32	1.63	2.05	.42	1/4-28 UNF
	AZ	35	50	1.63	2.23	.60	3/8-24 UNF

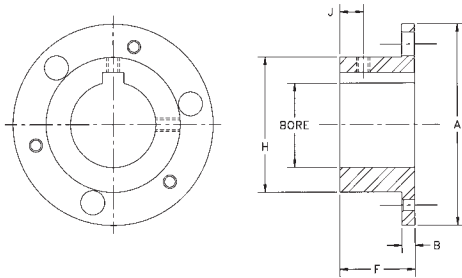
NOTE: AC and AL Hubs do not carry full torque capacity. Please consult engineering.

COUPLING HUB OPTIONS



6 BOLT COUPLING HUBS

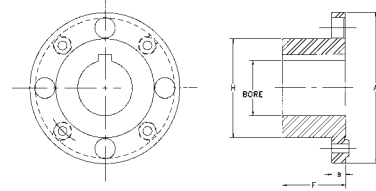
BH SERIES—USED ON BH, BP, B5, BY SERIES
 PROVIDED WITH STRAIGHT BORE AND KEYWAY
 INTERFERENCE FIT WITHOUT SETSCREWS IS RECOMMENDED



SIZE	MAX BORE	A	B	F	H	J	OPTIONAL SET SCREW SIZE
33	2.25	4.69	0.30	1.75	3.14	0.88	1/4-20 UNC
38	3.00	5.87	0.35	2.25	4.13	1.13	3/8-16 UNC
43	3.25	6.70	0.42	2.50	4.63	1.25	3/8-16 UNC
48	3.75	7.50	0.40	2.75	5.40	1.50	1/2-13 UNC
53	3.88	7.87	0.55	2.88	5.65	1.44	1/2-13 UNC
58	4.25	9.00	0.65	3.25	6.22	1.63	1/2-13 UNC
63	4.88	10.00	0.65	3.38	7.14	1.69	3/4-10 UNC
68	5.00	10.75	0.75	3.75	7.33	1.88	3/4-10 UNC
73	5.25	12.50	1.00	5.13	7.80	2.50	3/4-10 UNC
78	6.50	15.05	1.15	6.38	9.50	3.12	3/4-10 UNC

8 BOLT COUPLING HUBS

Dxx-3 CAST IRON MATERIAL, Dxx-3ST CAST STEEL MATERIAL
 USED ON HH, HSH, FSH, HFTH SERIES
 INTERFERENCE FIT WITHOUT SETSCREWS IS RECOMMENDED



SIZE	MAX BORE		A	B	F	H
	IRON	STEEL				
22	2.25	—	6.00	0.53	2.50	3.88
26	2.62	—	6.87	0.62	2.88	4.50
31	3.12	—	8.12	0.69	3.38	5.50
35	3.62	—	9.12	0.88	3.75	6.12
37	3.75	—	10.06	0.88	4.00	6.50
42	4.25	4.50	11.00	1.00	4.25	7.00
45	4.50	4.75	11.87	1.13	4.50	7.43
50	5.12	5.50	13.43	1.25	5.00	8.38
55	5.62	6.25	15.00	1.25	5.50	9.50
60	6.50	7.12	16.75	1.44	6.25	10.50
70	7.00	7.87	18.93	1.75	7.00	11.75
75	7.75	8.75	20.62	1.75	7.25	13.00
80	8.00	9.12	22.37	2.09	7.75	13.75
85	8.50	9.62	23.75	2.13	8.25	14.50
92	10.00	11.00	25.75	2.62	9.00	15.87

FORM-FLEX DISC IDENTIFICATION CHART

ALL DIMENSIONS ARE ROUNDED TO THE NEAREST FRACTIONAL SIZE FOR IDENTIFICATION PURPOSES. NO TOLERANCES ARE SPECIFIED OR IMPLIED.
 DISC SET THICKNESS VARIES FOR TYPE BA AND DA

4 BOLT DISCS	SIZE	WIDTH	I.D.	HOLE DIA	B.C. DIA	CHORD	DISC SET THICKNESS
		5	1-13/16	1	1/4	1-7/8	1-5/16
	10	2-3/16	1-3/16	1/4	2-3/8	1-5/8	0.09
	15	2-9/16	1-1/4	5/16	2-5/8	1-7/8	0.12
	20	2-13/16	1-5/8	5/16	3-1/8	2-3/16	0.14
	25	3-9/16	1-3/4	7/16	3-3/4	2-5/8	0.15
	30	4	2-1/16	1/2	4-1/4	3	0.18
	35	4-3/4	2-3/4	1/2	5-1/4	3-3/4	0.28
	40	5-1/2	3	5/8	6	4-1/4	0.30
	45	6-1/16	3-1/2	5/8	6-3/4	4-3/4	0.40
	50	7	4	3/4	7-3/4	5-1/2	0.43
	55	7-3/4	4-1/4	1	8-1/2	6	0.51
6 BOLT DISCS	SIZE	WIDTH	I.D.	HOLE DIA	B.C. DIA	CHORD	DISC SET THICKNESS
		33	3-3/4	2-3/4	1/4	3-3/4	1-7/8
	38	4-13/16	3-9/16	5/16	4-7/8	2-7/16	0.13
	43	5-11/16	3-15/16	7/16	5-9/16	2-7/8	0.16
	48	6-3/8	4-5/8	7/16	6-3/8	3-3/16	0.19
	53	6-3/4	4-3/4	1/2	6-5/8	3-5/16	0.24
	58	7-3/4	5-1/4	5/8	7-7/16	3-3/4	0.25
	63	8-1/2	6	5/8	8-3/8	4-3/16	0.30
	68	9-1/4	6-1/4	3/4	9-15/16	5	0.34
8 BOLT DISCS	SIZE	WIDTH	I.D.	HOLE DIA	B.C. DIA	CHORD	DISC SET THICKNESS
		22	5-5/8	3-7/8	5/16	4-3/4	1-13/16
	26	6-9/16	4-7/16	13/32	5-1/2	2-1/8	0.23
	31	7-3/4	5-1/4	15/32	6-1/2	2-1/2	0.25
	35	8-5/8	5-3/4	17/32	7-1/4	2-3/4	0.29
	37	9-5/8	6-5/16	5/8	8	3-1/16	0.31
	42	10-1/2	6-3/4	11/16	8-5/8	3-5/16	0.31
	45	11-1/4	7-1/4	3/4	9-1/4	3-1/2	0.37
	50	12-13/16	8-1/2	7/8	10-1/2	4	0.46
	55	14-3/8	9	1	11-3/4	4-1/2	0.54
	60	15-15/16	9-15/16	1-1/8	13	5	0.59
	70	18-8	11-1/8	1-5/16	14-3/4	5-5/8	0.78
	75	19-3/4	12	1-7/16	16	6-1/8	0.80
	80	21-7/16	13-1/8	1-9/16	17-3/8	6-5/8	0.81
	85	22-7/8	14	1-3/4	18-1/2	7-1/8	0.87
	92	24-7/8	15	1-7/8	20	7-5/8	1.00