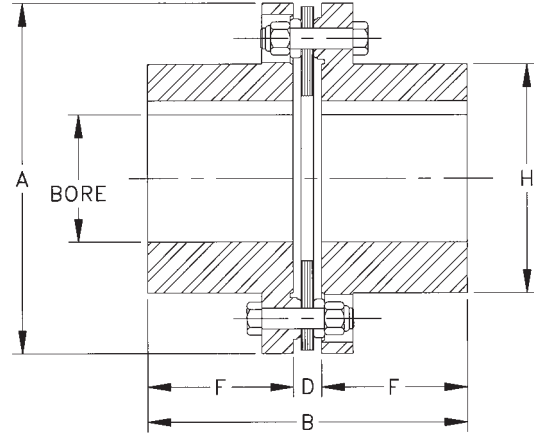
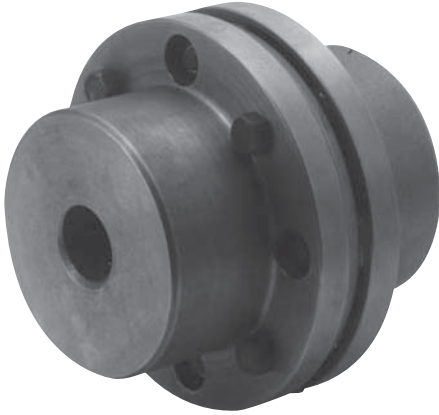




# SINGLE FLEX- HH SERIES 8 BOLT SINGLE COUPLING

The HH series is designed for high torque, low speed applications. Hubs are cast iron. Steel is optional. Flex discs are high strength alloy steel. Stainless steel flex discs are optional. Dynamic balancing for higher speed operation is not recommended. Single plane balancing of individual hubs is available.



SIZE	DIMENSIONS IN INCHES						
	MAX BORE		A (2)	B	D DBSE	F	H
	IRON	STEEL					
22	2.25	-	6.00	5.43	0.43	2.50	3.87
26	2.62	-	6.87	6.29	0.53	2.88	4.50
31	3.12	3.63	8.12	7.38	0.62	3.38	5.50
35	3.62	4.00	9.12	8.16	0.66	3.75	6.12
37	3.75	4.50	10.06	8.81	0.81	4.00	6.50
42	4.25	4.75	11.00	9.31	0.81	4.25	7.00
45	4.50	5.13	11.87	9.87	0.87	4.50	7.43
50	5.12	5.50	13.43	11.06	1.06	5.00	9.50
55	5.62	6.25	15.00	12.25	1.25	5.50	9.50
60	6.50	7.12	16.75	13.84	1.34	6.25	10.50
70	7.00	7.87	18.93	15.50	1.50	7.00	11.75
75	7.75	8.75	20.62	16.05	1.55	7.25	13.00
80	8.00	9.12	22.37	17.06	1.56	7.75	13.75
85	8.50	9.62	23.75	18.12	1.62	8.25	14.50
92	10.00	11.00	25.75	19.75	1.75	9.00	15.87
105	10.50	12.00	29.25	22.75	1.75	10.50	20.00
160	16.00	17.00	33.50	26.25	2.25	12.00	24.00

RATED MISALIGNMENT: 0.5 DEG/DISC

HUB OPTIONS	
HUB TYPE	SIZE
C.I.	26-160
STL	31-160
SEE PAGE F5-9	

**ORDERING:** HH Series couplings are sold as complete assemblies. Please specify hub type, bore sizes, and flex disc materials. A coupling will be configured to meet your specification.

SIZE	HP PER 100 RPM 1.0S.F	RATED TORQUE (lb. in.)	PEAK O/L TORQUE (lb. in.)	AGMA 8 MAX RPM	MAX RADIAL LOAD (lbs.)	WEIGHT (lbs.)	WR <sup>2</sup> (lb. in. <sup>2</sup> )	TQ/RAD X10 <sup>6</sup> (lb. in./rad)	FREE END FLOAT +/- inch
22	15.08	9,500	14,250	3,800	338	17	62	12.7	0.018
26	25.40	16,000	24,000	3,300	570	26	129	22.1	0.022
31	38.10	24,000	36,000	2,800	700	43	304	36.4	0.026
35	69.84	44,000	66,000	2,600	930	61	557	52.8	0.028
37	95.24	60,000	90,000	2,500	1,170	77	820	69.6	0.031
42	115.87	73,000	109,500	2,400	1,300	95	1,250	84	0.034
45	157.14	99,000	148,500	2,250	1,700	115	1,810	106	0.036
50	203.17	128,000	192,000	2,000	2,250	163	3,290	147	0.041
55	300.00	189,000	283,500	1,800	3,200	228	5,570	243	0.046
60	414.29	261,000	391,500	1,600	4,000	328	10,300	349	0.051
70	658.73	415,000	622,500	1,400	6,100	451	18,200	482	0.058
75	846.03	533,000	799,500	1,300	6,900	588	27,400	682	0.062
80	1,087.30	685,000	1,027,500	1,200	7,500	732	42,100	779	0.068
85	1,315.87	829,000	1,243,500	1,100	8,700	840	54,700	911	0.070
92	1,650.79	1,040,000	1,560,000	1,000	11,100	1,160	89,400	1220	0.078
105	1,984.13	1,250,000	1,875,000	1,000	8,460	1,780	160,000	3200	0.085
160	3,174.60	2,000,000	3,000,000	900	11,300	2,310	325,000	5140	0.125

NOTE:

- 1) WEIGHT, WR<sup>2</sup> AND TORSIONAL STIFFNESS VALUES SHOWN ARE FOR CAST IRON HUBS AT MAXIMUM BORE SIZE.
- 2) HUB FLANGE O.D. MAY VARY WITH STEEL HUBS.