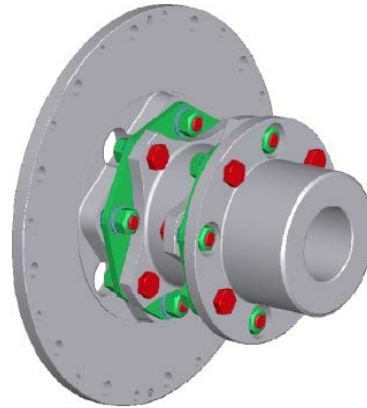
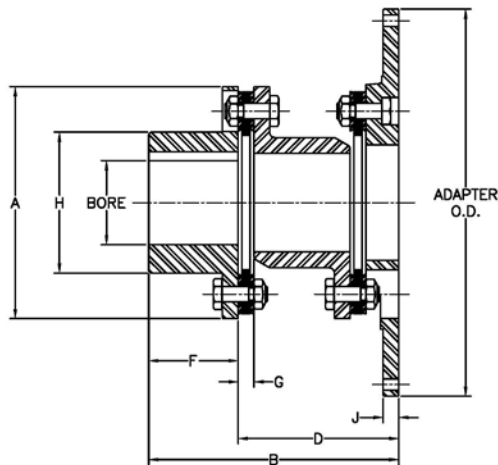


Heavy Duty Spacer Coupling GCF Series - Form-Flex®

Double Flex Spacer



Size	Spacer	Max Bore		Dimensions (mm)							Size	Adapter O.D. (mm [in])/ Standard Bolt Pattern						
		(mm)	(in)	A	B	D	F	G	H	J		314.33 [12.375]	352.43 [13.875]	466.73 [18.375]	517.53 [20.375]	571.50 [22.500]	673.10 [26.500]	733.43 [28.875]
340	31	100	3.75	212.9	208.0	134.9	73.2	14.5	138.2	12.7	340	Order	SAE	SAE	Order	SAE		
	35				222.5	149.4					412		SAE	Order	SAE	SAE/HD	SAE/HD	
412	42	120	4.50	279.4	289.3	181.4	108.0	19.1	165.4	14.5	424		SAE/HD	Order	SAE/HD	SAE/HD	SAE/HD	
	45				302.0	194.1					456		SAE/HD	SAE/HD	SAE/HD	SAE/HD		
	50				330.5	222.5					511			SAE/HD	SAE/HD			
424	55	190	6.88	381	410.0	251.2	158.8	24.9	243.1	25.4	SAE Bolting							
	60				435.4	276.6					BC	295.28	333.38	438.15	488.95	542.93	641.35	692.15
456	70	220	8.00	457.2	500.1	316.0	184.2	33.5	295.4	28.7	Hole Qty	8	8	8	8	6	12	12
	75				527.3	343.2					Hole Dia	10.4	10.4	13.5	13.5	16.5	16.5	19.8
511	80	280	10.00	558.8	603.5	374.9	228.6	39.6	368.3	35.1	HD Bolting							
	85				628.9	400.3					BC	292.10	317.50	425.45	469.90	520.70	622.30	682.63
	92				667.0	438.4					Hole Qty	8	8	8	8	8	12	12
											Hole Dia	13.5	16.5	19.8	23.1	26.2	26.2	26.2
											Speed Limit by Adapter O.D. (2b)							
											RPM	3,400	3,400	2,900	2,600	2,400	2,000	1,800

Size	Spacer	Rated Torque		Peak Overload (Nm)	Max RPM (2a)	Weight (1) (kg)	WR ² (1) (kg-m ²)	Misalignment Capacity	
		kW/100 RPM	(Nm)					Axial (+/- mm)	Angular (Degrees/Disc Pack)
340	31	48	4,519	6,779	3,400	20.9	0.166	1.52	0.33°
	35					21.4	0.167		
412	42	142	13,558	20,337	2,500	57.7	0.956	2.03	
	45					58.5	0.960		
	50					60.0	0.969		
424	55	283	27,116	40,673	1,800	118	2.44	2.54	
	60					122	2.44		
456	70	663	63,270	94,905	1,500	223	6.60	3.05	
	75					228	6.68		
511	80	1,303	124,280	186,420	1,200	395	17.23	3.56	
	85					401	17.41		
	92					460	20.16		

- 1) Weight and WR² calculated with hub at maximum inch bore size and minimum available adapter size.
- 2) a) Max RPM shown for smallest available adapter size, do not exceed this speed for any given coupling size.
b) Verify that adapter speed limit is adequate for application speed, do not exceed coupling MAX RPM (See note 2a).
- 3) Flywheel mounting hardware is not supplied with coupling.
- 4) Consult factory for torsional stiffness and alternating torque limits.

ORDERING

- 1) Specify coupling size and spacer option
Example: GCF424-60
- 2) Specify adapter size code. Specify bolting pattern for items noted as drilled per order.
Example: GCF424-60-26 or GCF424-60-22HD
- 3) Specify hub bore size and tolerance, keyway size or keyless, special hub length, etc.

STANDARD MATERIALS

HUB - CARBON STEEL
 SPACER - DUCTILE IRON
 FLYWHEEL ADAPTER - DUTILE IRON
 HARDWARE - ALLOY STEEL
 DISC PACKS - HIGH CARBON STEEL