

Floating Shaft Spacer Coupling G5 Series - Form-Flex®

Double Flex Floating Shaft



Size	Torque Rating			Weight (1) (kg)		WR ² (1) (kg-m ²)		Misalignment Capacity	
	kW / 100 (RPM)	Max Continuous (Nm)	Peak Overload (Nm)	at D Min	Add Per cm of D	at D Min	Add Per cm of D	Axial (+/- mm)	Angular (Degrees/ Disc Pack)
311	13.0	1,243	2,486	0.18	0.07	0.025	0.00015	0.711	0.5°
321	24.3	2,316	4,632	0.20	0.08	0.043	0.00022	0.737	
332	37.9	3,615	7,231	0.21	0.08	0.079	0.00026	0.762	
346	54.4	5,197	10,394	0.50	0.20	0.166	0.00080	1.27	
380	94.7	9,039	18,077	0.53	0.21	0.276	0.00093	2.03	
412	142	13,558	27,116	0.93	0.37	0.577	0.00221	2.03	0.33°
419	225	21,467	42,933	1.00	0.40	1.211	0.00279	2.54	
424	355	33,894	67,789	1.38	0.54	2.767	0.00730	2.54	
444	515	49,147	98,294	1.54	0.60	4.571	0.00997	2.79	
456	758	72,308	144,616	2.22	0.88	7.198	0.01704	3.05	
483	982	93,775	187,549	2.32	0.91	11.112	0.01947	3.30	
511	1420	135,578	271,156	2.32	0.91	18.801	0.01947	3.56	
520	2367	225,963	451,926	CONSULT ALTRA COUPLINGS ENGINEERING				4.57	
525	2959	282,454	564,908					5.08	
530	3551	338,945	677,890					5.08	
540	4735	451,926	903,853					6.10	

1) Weight and WR² values shown are for standard at max inch bore and spacer length at D Min

STANDARD MATERIALS

HUBS - CARBON STEEL

SPACER - CARBON STEEL

HARDWARE - ALLOY STEEL

DISC PACK - STAINLESS STEEL

MATERIAL OPTIONS

DISC PACK - ALLOY STEEL (for cost reduction, only available on sizes 412 to 540)

ZINC ELECTRO PLATING

ZINC PHOSPHATE COATING

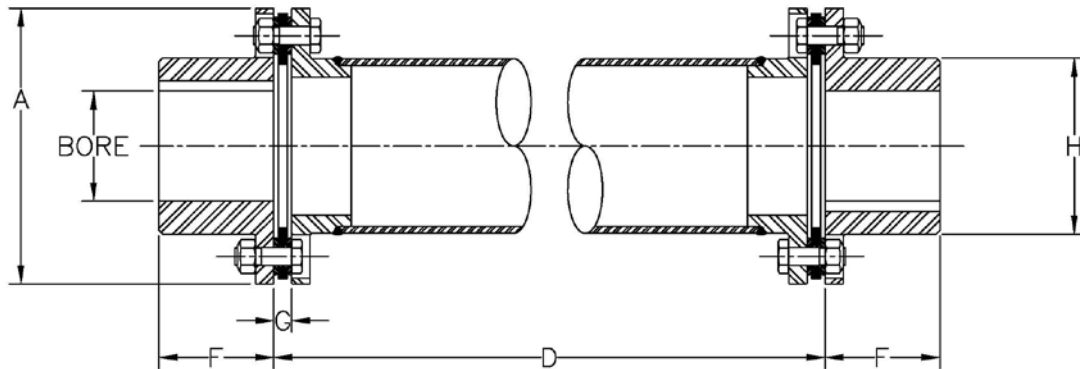
ALLOY STEEL HUBS

DESIGN VARIATIONS

- G5 - Welded Steel Tube
- G6 - Welded Steel Tube—Vertical
- G7 - Welded Steel Tube—Semi-Floating Spacer
- G5C - Composite Tube
- G6C - Composite Tube—Vertical
- G7C - Composite Tube— Semi-Floating

Floating Shaft Spacer Coupling G5 Series - Form-Flex®

Double Flex Floating Shaft



Size	Max Bore						Common Coupling Dimensions (mm)								Max D (mm) for RPM Shown					
	Standard Hub			Oversized/Large Hub			A	D Min	F	G	H		Tube		1800	1500	1200	900	750	600
	Rect. Key (mm)	Rect. Key (in)	Square Key (in)	Rect. Key (mm)	Rect. Key (in)	Square Key (in)					Std Hub	O/S Hub	OD	ID						
311	78	3.063	2.813	86	3.313	3.125	149.4	323.9	63.5	10.2	99.2	109.3	92.2	86.1	2388	2616	2946	3404	3708	4166
321	83	3.250	3.000	90	3.438	3.250	162.1	331.8	76.2	14.0	108.0	116.1	101.6	95.5	2565	2794	3150	3632	3962	4445
332	87	3.313	3.188	95	3.688	3.438	182.9	335.0	88.9	15.5	114.3	125.6	108.0	101.9	2642	2896	3226	3734	4089	4572
346	107	4.000	3.750	117	4.500	4.250	208.3	487.4	95.3	15.6	137.7	151.0	133.4	120.7	2819	3099	3454	3988	4369	4877
380	105	4.000	3.750	118	4.500	4.250	239.3	501.7	104.8	22.6	143.5	160.0	139.7	127.0	2896	3175	3556	4089	4496	5004
412	120	4.500	4.500	135	5.125	4.750	279.4	493.7	108.0	18.9	165.4	182.8	165.1	146.1	3124	3429	3835	4420	4851	5410
419	130	4.875	4.500	150	5.625	5.500	317.5	506.4	127.0	24.9	185.9	205.0	177.8	158.8	3251	3556	3988	4597	5029	5639
424	190	6.880	6.625				381.0	506.4	158.8	24.9	243.1		241.3	222.3	3810	4166	4674	5385	5918	6604
444	200	7.375	7.000				415.9	511.2	177.8	27.7	267.2		266.7	247.7	4013	4394	4928	5690	6223	6960
456	220	8.000	8.000				457.2	523.9	184.2	33.4	295.4		292.1	266.7	4191	4597	5131	5918	6502	7264
483	234	8.875	8.250				493.7	527.1	215.9	35.3	319.1		304.8	279.4	4267	4674	5232	6045	6629	7417
511	280	10.125	10.000				558.8	535.0	228.6	39.5	368.3		304.8	279.4	4267	4674	5232	6045	6629	7417
520	297	11.000	10.375				631.8	552.5	301.6	48.0	405.4									
525	322	12.000	11.000				679.5	555.6	304.8	49.5	440.7									
530	338	12.750	11.500				711.2	565.2	323.9	54.2	466.1									
540	448	17.000	15.750				850.9	612.8	381.0	65.4	574.7									

CONSULT ALTRA COUPLINGS ENGINEERING

ORDERING

G5 SERIES COUPLINGS ARE SOLD AS COMPLETE ASSEMBLIES
 PLEASE SPECIFY BORE SIZES, DISC PACK MATERIAL AND DBSE.
 A COUPLING WILL BE CONFIGURED TO MEET YOUR SPECIFICATIONS.