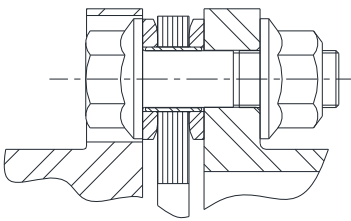


Form-Flex® A - Series	Form-Flex® G - Series
Higher bore capacity in low torque range	Higher Torque Density
1 ° Misalignment	.3 - .5 ° Misalignment
Clearance Fit is standard	Interference Fit is standard
AGMA 7 balance class	AGMA 8 balance class
Non-Unitized Flex Pack	Unitized Flex Pack
ATEX Group II/ Cat 3	ATEX Group II/ Cat 3
Low to Moderate Speeds	Low to Moderate Speeds

DISC PACK DESIGN COMPARISON

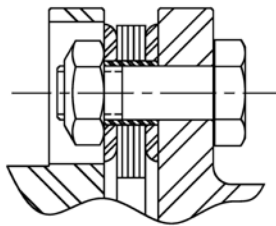
**Form-Flex® G-Series
Sizes 311-380**



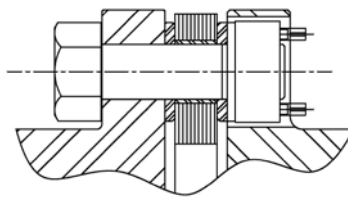
UNITIZED

- Disc pack force transferred to washer & hub interface
- Low bolt bending stress
- All torque transmitted through friction
- Higher torque capacity

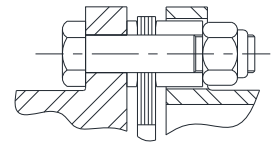
**Form-Flex® G-Series
Sizes 340 & 412-511**



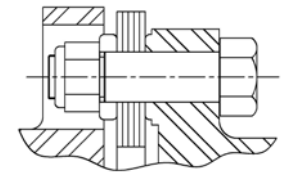
**Form-Flex® G-Series
Sizes 517-540**



**Form-Flex®
A-Series
Sizes 5-35**



**Form-Flex®
HSH/FSH**

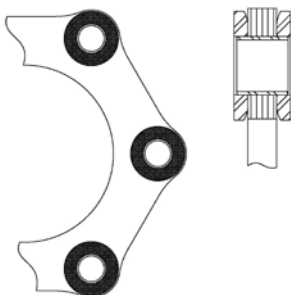


NON-UNITIZED

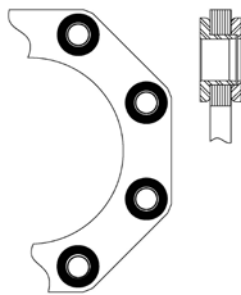
- Disc pack creates a bending moment on bolt
- High bolt bending stress
- Torque transmitted through shear and friction
- Lower torque capacity

UNITIZED DISC DESIGNS

**Form-Flex®
G-Series, Sizes 311-380
(excluding 340)**

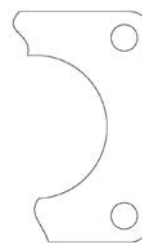


**Form-Flex®
G-Series, Sizes 340 & 412-540**



NON-UNITIZED DISC DESIGNS

**Form-Flex®
A-Series sizes 5-35**



**Form-Flex®
HSH/FSH**

