

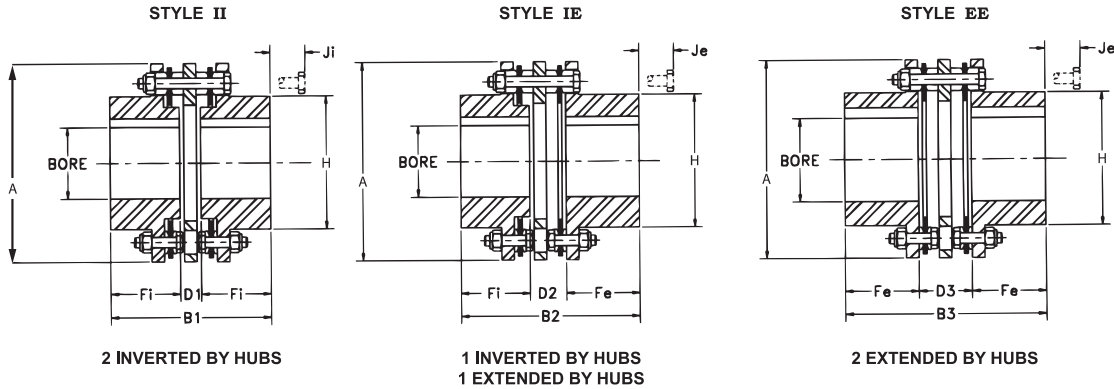


CLOSE COUPLE - BY SERIES

6 BOLT CLOSE COUPLED COUPLING

The BY series close coupling is a low cost replacement for gear or elastomeric couplings. It is ideal for use in low to moderate speed applications with motor or turbine drivers. The BY is an economical alternative to Axial Split spacer designs. The BY accommodates close shaft spacings by allowing the connected shafts to extend through the flex discs and spacer without restriction. The spacer is not service removable if the shaft gap is less than the D1 dimension shown. For shorter shaft spacings, the flex discs may still be replaced by removing the coupling bolts and shuttling the spacer from side to side.

Inverted (BY) and Extended (BH) hubs are available to allow varying shaft diameters and spacing.



COUPLING CONSISTS OF:
 2 – HUBS – EXAMPLE- BY43A x 2-1/2”
 1 – SPACER ASSEMBLY – EXAMPLE- BY43SAA
 THIS COUPLING IS SOLD AS COMPONENTS

RATED MISALIGNMENT: 0.5 DEG/DISC

SIZE	DIMENSIONS IN INCHES														
	MAX BORE		A	B1	B2	B3	C	DBSE			Fi	Fe	H	Ji	Je
	BY inv	BH ext						D1	D2	D3					
33	2.00	2.25	4.69	4.13	4.530	4.93	1.350	0.43	0.930	1.43	1.85	1.75	3.14	1.46	1.06
38	2.63	3.00	5.87	4.45	5.260	6.07	1.440	0.57	1.070	1.57	1.94	2.25	4.13	1.61	0.80
43	2.88	3.25	6.70	5.41	6.265	7.12	1.645	0.81	1.465	2.12	2.30	2.50	4.63	2.51	1.60
48	3.25	3.75	7.50	5.64	6.630	7.62	1.760	0.76	1.440	2.12	2.44	2.75	5.40	2.34	1.35
53	3.63	3.88	7.87	6.77	7.600	8.43	2.050	1.01	1.840	2.67	2.88	2.88	5.65	2.93	2.10
58	4.00	4.25	9.00	7.60	8.700	9.80	2.150	1.20	2.250	3.30	3.20	3.25	6.22	4.40	3.30
63	4.50	4.88	10.00	8.40	9.230	10.06	2.550	1.20	2.250	3.30	3.60	3.38	7.14	4.00	3.17
68	4.75	5.00	10.75	9.20	10.450	11.70	2.500	1.60	2.900	4.20	3.80	3.75	7.33	5.28	4.03

SIZE	HP PER 100 RPM 1.0 S.F	RATED TORQUE (lb. in.)	PEAK O/L TORQUE (lb. in.)	AGMA 8 MAX RPM	WEIGHT (lbs.)	WR ² (lb. in. ²)	TQ/RAD X10° (lb. in./rad)	FREE END FLOAT +/- inch
33	4.84	3,050	4,575	8,400	8.06	22.3	0.94	0.060
38	10.08	6,350	9,525	7,500	13.9	65.1	2.98	0.084
43	19.84	12,500	18,750	6,800	23.2	144	4.99	0.090
48	26.98	17,000	25,500	6,500	31.1	241	5.42	0.108
53	38.10	24,000	36,000	6,000	40.3	345	9.10	0.108
58	53.97	34,000	51,000	5,500	65.4	734	15.4	0.118
63	76.19	48,000	72,000	5,200	82.8	1150	25.8	0.140
68	114.29	72,000	108,000	4,800	106	1760	37.4	0.144

MATERIAL CLASSES		SPACER ASSEMBLY
CLASS	SIZE	PART #
A	33-68	BYxxSAA
B	33-68	BYxxSAB
C	N/A	N/A
E	N/A	N/A
SEE PAGE F5-4		xx = SIZE