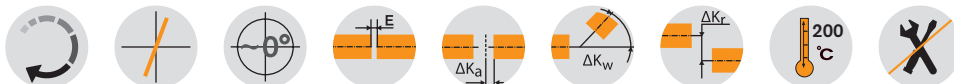


Taper hubs for high friction torques



TOOLFLEX® Type S-KN Hub material steel/bellow stainless steel

Size	Torque of bellow TKN ¹⁾ [Nm]	Max. speed n [rpm]	Dimensions [mm]														Weight ⁵⁾ [kg]
			Finish bore		L	L _{total}	l ₁ ; l ₂	D _H	D ₁	D ₂	Clamping screws			Pull-off threads			
			min. d	max.d	4 ²⁾	4 ²⁾					M	T _A [Nm]	Number z	M ₁	Number z	T _{A1} ⁴⁾ [Nm]	
30	35	15280	12	22	48	54	22	50	43	47	M4	2,9	12	M4	6	1,2	0,4
38	65	12600	12	28	56	63	26	60,5	52	56	M5	6	12	M5	6	1,4	0,7
42	95	11580	14	35	64	71	29	66	60	63	M5	6	12	M5	6	1,4	0,8
45	170	9300	15	40	74,5	82,5	34	82	68	77	M6	14	12	M6	6	3	1,5
55 ³⁾	340	7870	15	56	95,5	106	40	97	95	95	M8	35	12	M8	6	6	2,5

¹⁾ For selection see page 18 et seqq.

²⁾ Type S = 4 layers

³⁾ Hub made of steel welded to bellow

⁴⁾ After assembly of the clamping screws (M) tighten the tack thread (M₁) to the torque T_{A1} indicated.

⁵⁾ Details referring to the overall coupling with max. bore

TOOLFLEX® Type M-KN Hub material steel/bellow stainless steel

Size	Torque of bellow TKN ¹⁾ [Nm]	Max. speed n [rpm]	Abmessungen [mm]														Weight ⁵⁾ [kg]
			Finish bore		L	L _{total}	l ₁ ; l ₂	D _H	D ₁	D ₂	Clamping screws			Pull-off threads			
			min. d	max.d	6 layers ²⁾	6 layers ²⁾					M	T _A [Nm]	Number z	M ₁	Number z	T _{A1} ⁵⁾ [Nm]	
30	35	15280	12	22	57	63	22	50	43	47	M4	2,9	12	M4	6	1,2	0,4
38	65	12600	12	28	68	75	26	60,5	52	56	M5	6	12	M5	6	1,4	0,7
42	95	11580	14	35	75	82	29	66	60	63	M5	6	12	M5	6	1,4	0,8
45	170	9300	15	40	91	99	34	82	68	77	M6	14	12	M6	6	3	1,5
55 ³⁾	340	7870	15	56	109	120	40	97	95	95	M8	35	12	M8	6	6	2,5

¹⁾ For selection see page 18 et seqq.

²⁾ Type M = 6 layers

³⁾ Hub made of steel welded to bellow

⁴⁾ After assembly of the clamping screws (M) tighten the tack thread (M₁) to the torque T_{A1} indicated.

⁵⁾ Details referring to the overall coupling with max. bore

Review of shaft-hub-connection: Friction torques for hub type 6.5

Size	Ø14	Ø15	Ø16	Ø19	Ø20	Ø24	Ø25	Ø28	Ø30	Ø32	Ø35	Ø38	Ø40	Ø42	Ø45	Ø48	Ø50	Ø55
30	50	58	66	71	79													
38		81	92	130	103	149	161	202										
42				105	117	168	131	164	189	215	257							
45					230	332	230	288	331	376	451	531	589					
55 ⁴⁾							483	606	696	792	585	690	764	843	967	1101	1194	1445

Ordering-
example:

TOOLFLEX® 38 S-KN

Ø15

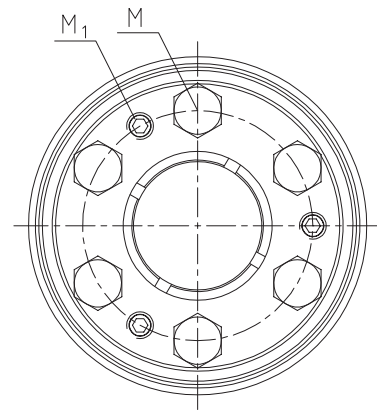
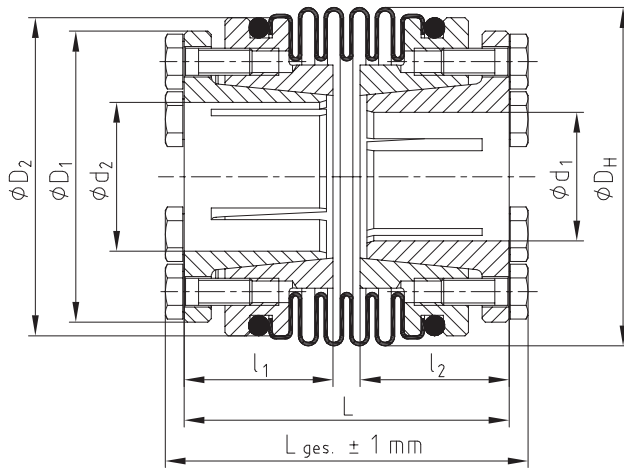
Ø22

Size and type of coupling

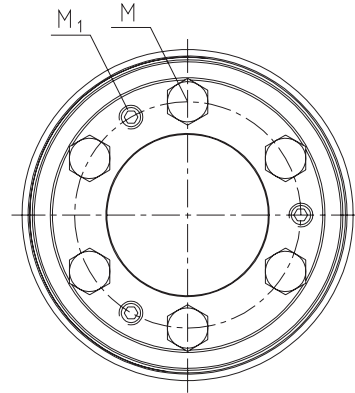
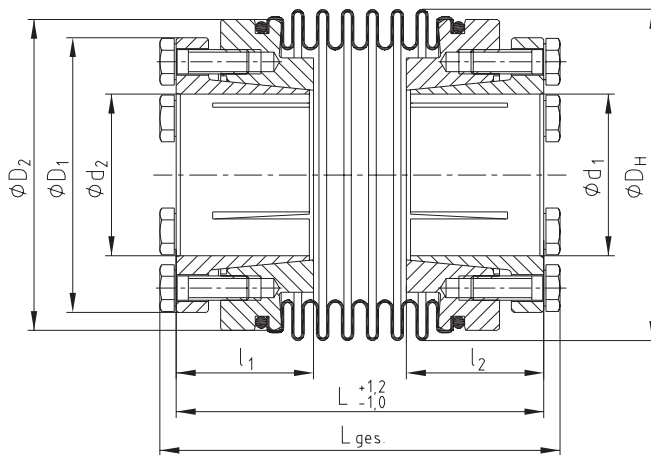
Finish bore

Finish bore

TOOLFLEX® S-KN

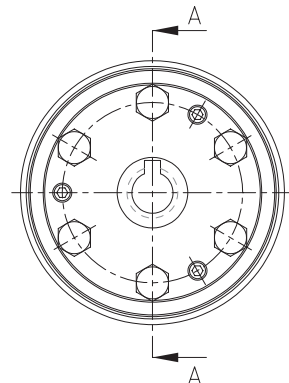
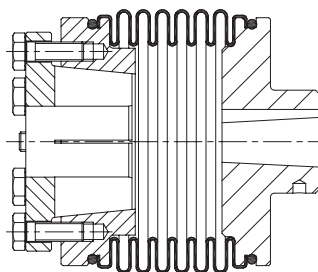


TOOLFLEX® M-KN



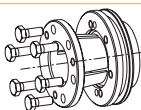
Other types:

TOOLFLEX® KN for FANUC motors



Hub types

Type 6.5



Taper hub KN