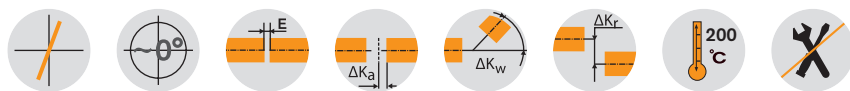


# Flange programme



## TOOLFLEX® Type S-CF Hub material aluminium (size 55 steel)/bellow stainless steel

Size	Finish bore		Dimensions [mm]									Clamping screw					Flange	
	min. d <sub>1</sub>	max. d <sub>1</sub>	D <sub>H</sub>	D <sub>B</sub>	D <sub>F</sub>	d <sub>2</sub> H7	l <sub>3</sub>	l <sub>1</sub>	l <sub>2</sub>	E	L	D <sub>K</sub>	e <sub>1</sub>	t <sub>1</sub>	M	T <sub>A</sub>	D <sub>T</sub>	M <sub>1</sub>
30	10	30	55	50	47	25	1,5	16	23,0	10,5	49,5	58,0	19	7	M6	10	30	M4
						29											34	
38	12	38	65	60,5	55,75	29	1,5	18	25,5	11,0	54,5	72,6	25	9	M8	25	35	M5
						36											42	
42	14	42	70	66	62,95	36	1,5	21	30,0	15,0	66,0	76,1	27	9	M8	25	42	M5
						43											49	
45	14	45	83	82	77	38	1,5	23	32,0	14,5	69,5	89,0	30	11	M10	49	45	M6
						49											56	
55 <sup>2)</sup>	20	55	100	97	95	51	1,5	28	40,0	23,5	91,5	106,0	37	14	M12	120	60	M8
						68											78	

### Technical data

Size	Type	Torque of bellow T <sub>KN</sub> [Nm] <sup>1)</sup>	Speed n [rpm]	Torsion spring stiffness C <sub>T</sub> [Nm/rad]	Axial spring stiffness [N/mm]	Radial spring stiffness [N/mm]	Perm. displacements		
							Axial [mm]	Radial [mm]	Angular [degrees]
30	S	35	8700	14800	97	233	±0,5	0,20	1,5
38	S	65	7350	24900	108	318	±0,6	0,20	1,5
42	S	95	6820	36500	120	499	±0,6	0,20	1,5
45	S	170	5750	64000	132	738	±0,9	0,25	1,5
55 <sup>2)</sup>	S	340	4800	96100	160	894	±1,0	0,25	1,5

## TOOLFLEX® Type M-CF Hub material aluminium (size 55 steel)/bellow stainless steel

Size	Finish bore		Dimensions [mm]									Clamping screw					Flange	
	min. d <sub>1</sub>	max. d <sub>1</sub>	D <sub>H</sub>	D <sub>B</sub>	D <sub>F</sub>	d <sub>2</sub> H7	l <sub>3</sub>	l <sub>1</sub>	l <sub>2</sub>	E	L	D <sub>K</sub>	e <sub>1</sub>	t <sub>1</sub>	M	T <sub>A</sub>	D <sub>T</sub>	M <sub>1</sub>
30	10	30	55	50	47	25	1,5	16	23,0	19,5	58,5	58,0	19	7	M6	10	30	M4
						29											34	
38	12	38	65	60,5	55,75	29	1,5	18	25,5	23,0	66,5	72,6	25	9	M8	25	35	M5
						36											42	
42	14	42	70	66	62,95	36	1,5	21	30,0	26,0	77,0	76,1	27	9	M8	25	42	M5
						43											49	
45	14	45	83	82	77	38	1,5	23	32,0	31,0	86,0	89,0	30	11	M10	49	45	M6
						49											56	
55 <sup>2)</sup>	20	55	100	97	95	51	1,5	28	40,0	37,0	105,0	106,0	37	14	M12	120	60	M8
						68											78	

### Technical data

Size	Type	Torque of bellow T <sub>KN</sub> [Nm] <sup>1)</sup>	Speed n [rpm]	Torsion spring stiffness C <sub>T</sub> [Nm/rad]	Axial spring stiffness [N/mm]	Radial spring stiffness [N/mm]	Perm. displacements		
							Axial [mm]	Radial [mm]	Angular [degrees]
30	M	35	8700	14800	65	155	±0,8	0,25	2,0
38	M	65	7350	24900	72	212	±0,8	0,25	2,0
42	M	95	6820	36500	80	333	±0,8	0,25	2,0
45	M	170	5750	64000	88	492	±1,0	0,30	2,0
55 <sup>2)</sup>	M	340	4800	96100	107	598	±1,0	0,30	2,0

<sup>1)</sup> For selection see page 18 et seqq.

<sup>2)</sup> Hub made of steel welded to bellow

## Review of shaft-hub-connection: Friction torques for hub type 2.5

Size	Ø10	Ø11	Ø12	Ø14	Ø15	Ø16	Ø18	Ø19	Ø20	Ø24	Ø25	Ø28	Ø30	Ø32	Ø35	Ø38	Ø40	Ø42	Ø45	Ø50	Ø55	
30		33,1	33,8	35,1	35,8	36,5	37,8	38,5	39,2	41,9	42,5	44,6	45,9									
38							84,2	85,4	86,6	91,6	92,8	96,5	99,0	102	105	109						
42				84,2	85,4	86,6	89,1	90,3	91,6	96,5	97,8	102	104	106	110	114	116	119				
45									157	165	167	173	177	181	187	193	197	200	206			
55 <sup>4)</sup>										397	401	413	421	429	442	454	462	470	482	502	523	

Ordering-example:

TOOLFLEX® 38 M-CF

Size and type of coupling

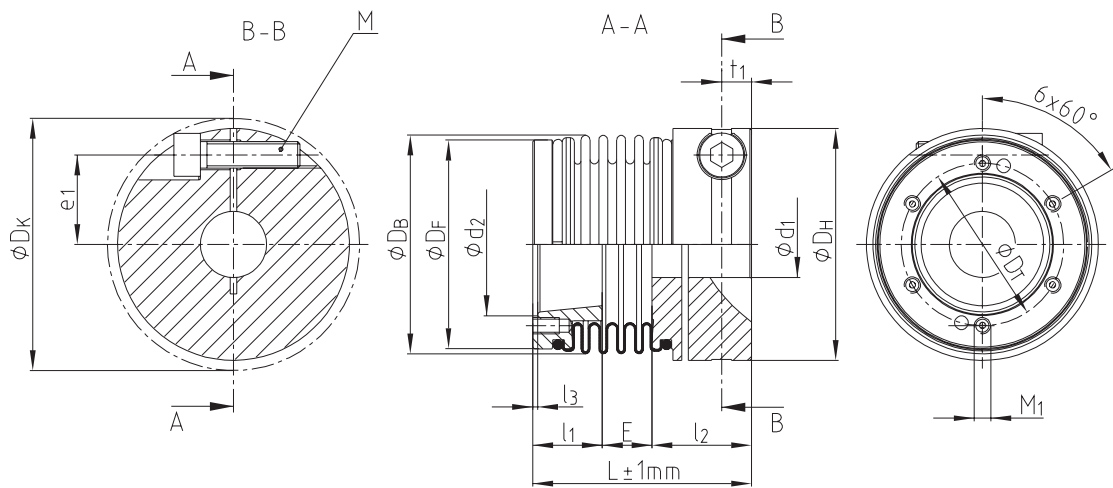
Ø15

Finish bore

Ø29 - Ø35 - 6xM5

Dimensions of flange (d<sub>2</sub> - D<sub>T</sub> - M<sub>1</sub>)

TOOLFLEX® S-CF



TOOLFLEX® M-CF

