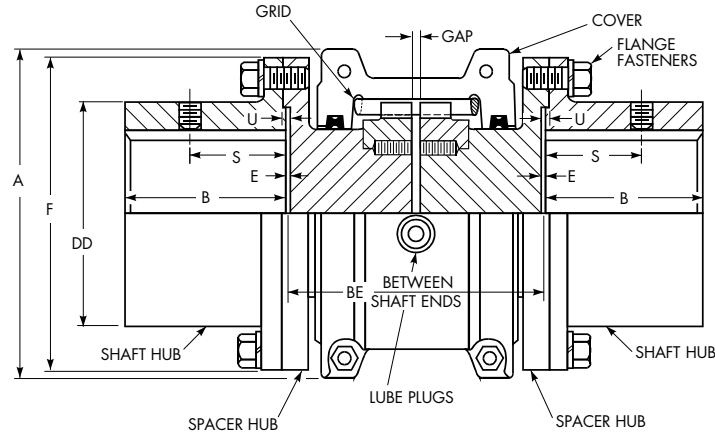


Full Spacer Type T31



Dimensions (in)

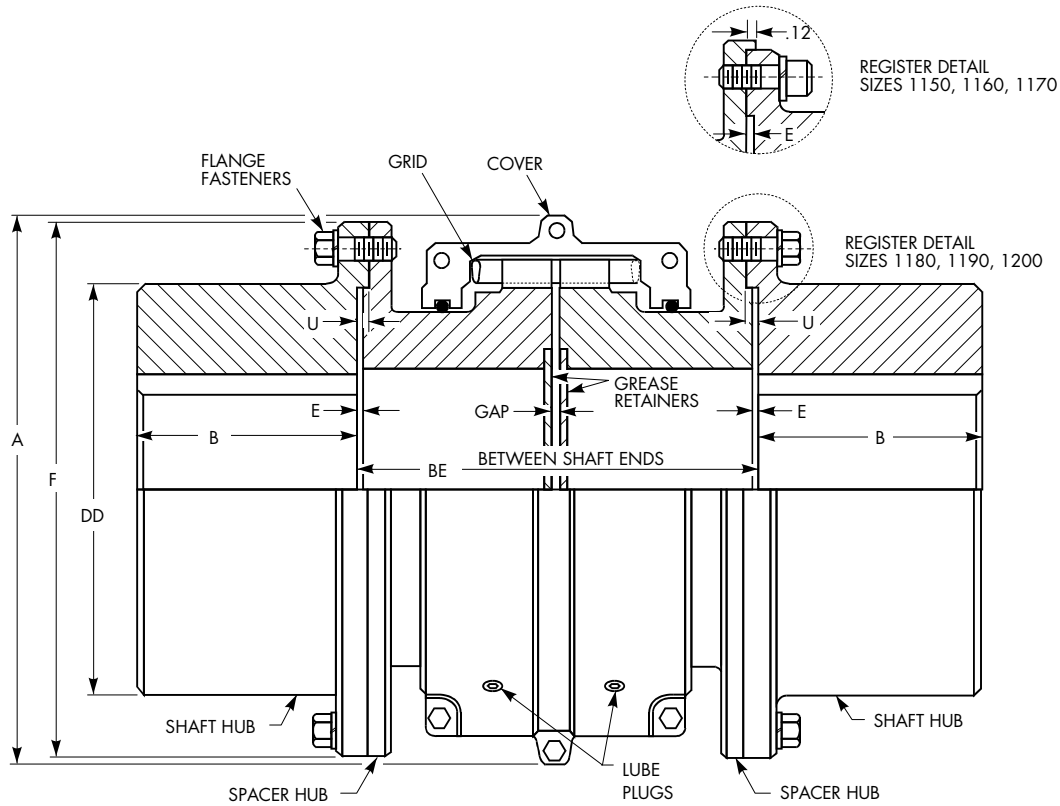
Size ①	Torque Rating (lb-in) ②	Allow Speed RPM ③	Max Bore ④	Min Bore ⑤	Cplg Wt with No Bore & Min BE (lb)	Wt Added per Inch of BE over Min	Lube Wt (lb)	A	B	BE		DD	E	F	S	U	GAP	Flange Fasteners	
										Min	Max							No. per Flange & SAE Grade	Dia (in)
1020T	460	3600	1.375	0.500	8.5	0.57	0.06	3.82	1.38	3.50	8.00	2.06	0.03	3.38	1.08	0.08	0.188	4, Gr 8	0.250
1030T	1,320	3600	1.625	0.500	11.5	0.87	0.09	4.16	1.62	3.50	8.50	2.34	0.03	3.69	1.24	0.08	0.188	8, Gr 8	0.250
1040T	2,200	3600	2.125	0.500	18.6	1.17	0.12	4.50	2.12	3.50	8.50	3.09	0.03	4.44	1.08	0.08	0.188	8, Gr 8	0.250
1050T	3,850	3600	2.375	0.500	28.2	1.58	0.15	5.32	2.38	4.37	8.50	3.44	0.03	4.94	1.60	0.08	0.188	8, Gr 8	0.312
1060T	6,050	3600	2.875	0.750	45.1	2.06	0.19	5.82	2.88	4.81	13.00	4.06	0.06	5.69	1.70	0.11	0.188	8, Gr 8	0.375
1070T	8,800	3600	3.125	0.750	54.6	2.69	0.25	6.25	3.12	5.00	13.00	4.31	0.06	6.00	1.84	0.11	0.188	12, Gr 8	0.375
1080T	18,150	3600	3.500	1.062	88.1	3.86	0.38	7.50	3.50	6.12	16.00	4.81	0.06	7.00	1.96	0.11	0.188	12, Gr 8	0.500
1090T	33,000	3600	4.000	1.062	132	5.37	0.56	8.31	4.00	6.44	16.00	5.62	0.06	8.25	2.24	0.11	0.188	12, Gr 5	0.625
1100T	55,550	2440	4.750	1.500	199	6.95	0.94	9.88	3.56	8.00	16.00	6.75	0.06	9.88	-	0.12	0.250	12, Gr 5	0.750
1110T	82,500	2250	5.500	2.000	261	8.98	1.12	10.62	4.10	8.25	16.00	7.75	0.06	10.88	-	0.12	0.250	12, Gr 5	0.750
1120T	121,000	2025	6.250	2.500	392	11.2	1.62	12.12	4.70	9.69	16.00	8.88	0.06	12.56	-	0.16	0.375	12, Gr 5	0.875
1130T	176,000	1800	7.000	3.000	522	16.5	2.00	13.62	5.30	10.12	16.00	9.38	0.06	13.62	-	0.16	0.375	12, Gr 5	1.000
1140T	253,000	1650	8.000	3.500	720	22.4	2.50	15.12	6.00	10.50	16.00	10.50	0.06	15.19	-	0.16	0.375	12, Gr 5	1.125

- ① Refer to **page 10** for General Information.
- ② Peak torque capacity is two times the published rating. Torque ratings for hubs with bushings differ from those shown, refer to **Table 18, page 36**.
- ③ Consult Factory for higher speeds.
- ④ Maximum bores are reduced for hubs furnished with an interference fit and a setscrew over the keyway. Refer to Rexnord Engineering Sheet 427-105 for details.
- ⑤ Minimum bore is the smallest bore to which a Rough Stock Bore (RSB) hub can be bored. Depending upon coupling size, RSB hubs may have only a blind centering hole or a through hole that will permit remachining of the hubs to the minimum bores specified.

Table 6 — Type T31 Standard Stock Spacer Lengths (BE=Distance Between Shaft Ends)

Between Shaft Ends			Coupling Size										
(in)	(mm)	Pump Std	1020T	1030T	1040T	1050T	1060T	1070T	1080T	1090T	1100T	1110T	
3.50	89	ANSI	X	X	X	-	-	-	-	-	-	-	
3.94	100	ISO	X	X	X	-	-	-	-	-	-	-	
4.25	108	MISC	X	X	X	-	-	-	-	-	-	-	
4.38	111	ANSI	X	X	X	X	-	-	-	-	-	-	
4.69	119	MISC	X	X	X	X	-	-	-	-	-	-	
5.00	127	ANSI	X	X	X	X	X	X	-	-	-	-	
5.22	133	MISC	-	-	X	-	-	-	-	-	-	-	
5.38	137	MISC	-	X	X	-	-	-	-	-	-	-	
5.51	140	ISO	X	X	X	X	X	X	-	-	-	-	
5.66	144	MISC	-	X	X	-	-	-	-	-	-	-	
5.81	148	MISC	-	X	X	X	-	-	-	-	-	-	
5.97	152	MISC	-	-	X	X	-	-	-	-	-	-	
6.12	155	MISC	-	X	X	X	X	X	-	-	-	-	
6.94	176	MISC	X	X	X	X	X	-	-	-	-	-	
7.00	178	ANSI	-	-	-	-	-	X	X	-	-	-	
7.09	180	ISO	-	-	X	X	-	X	X	X	-	-	
7.25	184	ANSI	-	X	X	X	X	X	X	X	-	-	
8.00	203	MISC	-	-	-	-	-	-	-	-	X	-	
8.59	218	MISC	-	-	-	-	-	-	X	-	-	-	
8.62	219	MISC	-	-	-	-	X	X	-	-	-	-	
8.88	226	MISC	-	-	-	-	-	-	-	-	X	-	
9.75	248	ANSI	-	-	-	-	X	X	X	X	X	X	
9.84	250	ISO	-	-	-	-	-	-	-	-	X	X	
9.94	252	MISC	-	-	-	-	-	-	X	-	-	-	
11.09	282	MISC	-	-	-	-	-	-	X	-	-	-	
12.25	311	ANSI	-	-	-	-	X	X	X	X	-	-	
14.05	357	MISC	-	-	-	-	-	-	-	-	-	X	

Full Spacer Type T31



Dimensions (in)

Size ①	G52 Rigid Hub Size ③	Torque Rating (lb-in) ④	Allow Speed RPM ⑤	Max Bore ⑥	Min Bore ⑦	Cplg Wt with No Bore & Min BE (lb)	Wt Added per Inch of BE over Min	Lube Wt (lb)	A	B	BE		DD ②	E	F	U	GAP	Flange Fasteners	
											Min	Max						No. per Flange & SAE Grade	Dia (in)
1150T	1055G	352,000	1500	10.000	4.000	1018	10.8	4.3	17.84	6.80	13.56	14.62	13.16	0.20	16.75	—	0.375	14, Gr 8	0.875
1160T	1060G	495,000	1350	11.000	4.500	1247	14.0	6.2	19.74	7.34	14.00	16.00	14.41	0.26	18.00	—	0.375	14, Gr 8	0.875
1170T	1070G	660,000	1225	13.000	5.000	1887	21.3	7.7	22.30	8.67	15.13	17.50	16.73	0.33	20.75	—	0.375	16, Gr 8	1.000
1180T	1080G	915,000	1100	13.000	4.000	2502	26.5	8.3	24.80	9.80	15.75	19.31	17.75	0.20	23.25	0.32	0.375	16, Gr 5	1.125
1190T	1080G	1,210,000	1050	14.250	4.500	3362	33.8	9.7	26.60	10.86	16.19	20.88	20.00	0.20	26.00	0.32	0.375	18, Gr 5	1.250
1200T	1100G	1,650,000	900	15.000	5.000	4211	47.8	12.4	29.80	12.02	17.50	22.62	20.88	0.24	28.00	0.36	0.375	18, Gr 5	1.250

- ① Refer to **page 10** for General Information.
- ② Dimension DD is for an as-cast, unmachined surface for Sizes 1180, 1190 and 1200T.
- ③ Type T31 couplings shown use Type G52 gear coupling rigid hubs as the shaft hubs.
- ④ Peak torque capacity is two times the published rating. Torque ratings for hubs with bushings differ from those shown, refer to **Table 18, page 36**.
- ⑤ Consult Factory for higher speeds.
- ⑥ Maximum bores are reduced for hubs furnished with an interference fit and a setscrew over the keyway. Refer to Rexnord Engineering Sheet 427-105 for details.
- ⑦ Minimum bore is the smallest bore to which a Rough Stock Bore (RSB) hub can be bored. Depending upon coupling size, RSB hubs may have only a blind centering hole or a through hole that will permit remachining of the hubs to the minimum bores specified.