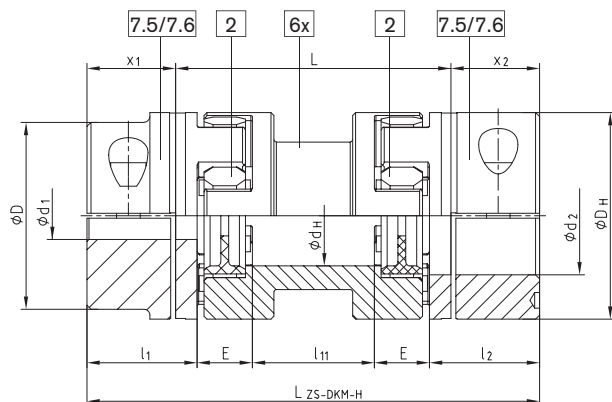
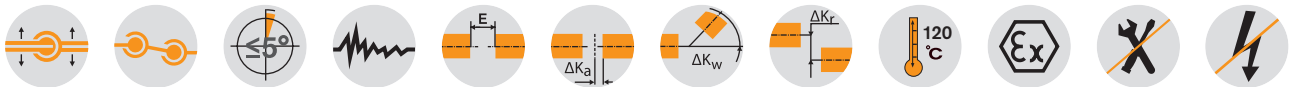
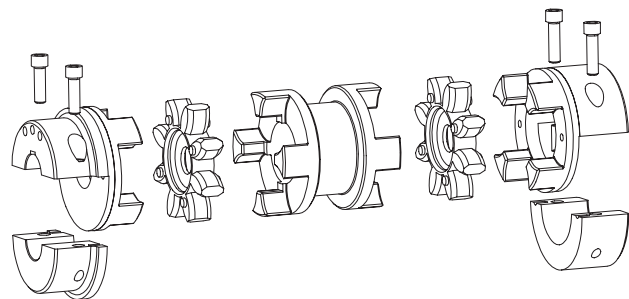


Double-cardanic shaft coupling



Type ZS-DKM-H



ROTEX® Type ZS-DKM-H

Size	Drop-out center length L [mm]	Max. finish bore $\phi d1/d2$ [mm]	Spider (part 2) 1) TKN [Nm]	Dimensions [mm]								Cap screws DIN EN ISO 4762 - 12.9			Max. displacements					Weight ²⁾ [kg]
				D _H	d _H	l ₁ ; l ₂	x ₁ ; x ₂	l ₁₁	E	LZS-DKM-H	M	TA [Nm]	Axial [mm]	with n = 1500 rpm		with n = 3000 rpm				
														Radial [mm]	Angular [°]	Radial [mm]	Angular [°]			
24	100	28	35	55	27	30	22,5	49	18	145	M6	14	1,4	1,17	0,87	1,40	1,60	1,90		
	140							89		185				1,87					1,40	
28	100	38	95	65	30	35	25,5	41	20	151	M8	35	1,5	1,06	0,80	1,32	2,20	2,20		
	140							81		191				1,76					1,32	
38	100	45	190	80	38	45	35,5	33	24	171	M8	35	1,8	0,99	0,74	1,27	3,90	4,10		
	140							73		211				1,69					1,27	
42	100	55	265	95	46	50	39,0	26	26	178	M10	69	2,0	0,91	0,68	1,20	5,10	5,10		
	140							66		218				1,60					1,20	
48	100	60	310	105	51	56	45,0	22	28	190	M12	120	2,1	0,87	0,65	1,18	7,10	7,10		
	140							62		230				1,57					1,18	
55	100	70	410	120	60	65	50,0	10	30	200	M12	120	2,2	0,70	0,52	0,75	9,50	9,50		
	140							50		240				1,40					1,05	
	180							90		280				2,09					1,57	
	200							110		300				2,44					1,83	
65	140	80	625	135	68	75	60,0	40	35	260	M12	120	2,6	1,31	0,98	1,50	16,80	16,80		
	180							80		300				2,00					1,50	
75	140	90	1280	160	80	85	67,5	25	40	275	M16	295	3,0	1,13	0,85	1,37	26,00	26,00		
	180							65		315				1,83					1,37	
	200							85		335				2,19					1,64	
	250							135		385				3,05					2,29	
90	180	110	2400	200	100	100	81,5	53	45	343	M20	580	3,4	1,71	1,28	48,90	48,90			
	250							123		413				2,93				2,19		

¹⁾ Maximum torque of coupling T_{Kmax} = rated torque of coupling $T_{KN} \times 2$

Size 24 to 90 spider type 98 Sh-A-GS

ZS-DKM-H: transmittable torque according to 92 Sh-A-GS

²⁾ Referring to max. bore

Finish bore according to ISO fit H7, feather keyway according to DIN 6885 sheet 1 - JS9

7.5= Shell clamping hub without feather key for a double-cardanic connection

7.6= Shell clamping hub with feather key for a double-cardanic connection

ATTENTION: The standard line is only applicable for horizontal assembly. Vertical assembly on request.

Ordering example:

ROTEX® 38	ZS-DKM-H	140	98 Sh-A-GS	7.5	Ø 38	7.5	Ø30
Coupling size	Type	Shaft distance dimension L	Spider hardness	Hub type	Finish bore	Hub type	Finish bore