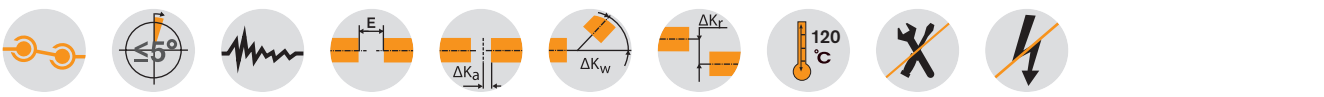
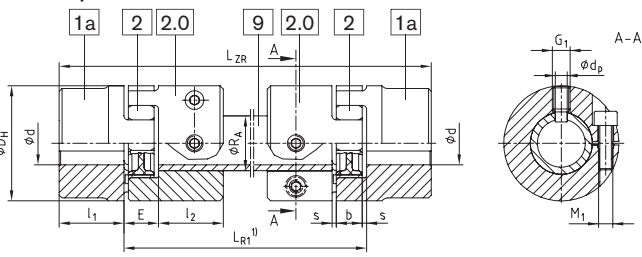


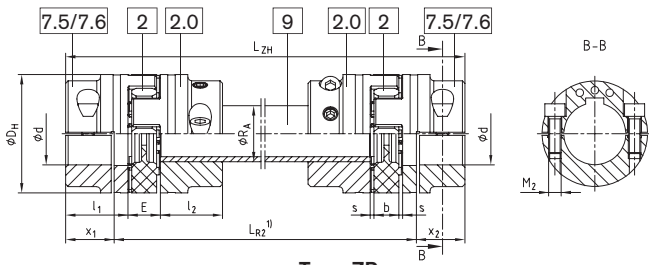
Intermediate shaft programme



Components



Type ZR
(with GS spider)



Type ZR
(with GS spider and clamping hubs type DH for a double-cardanic connection 7.5 or 7.6)

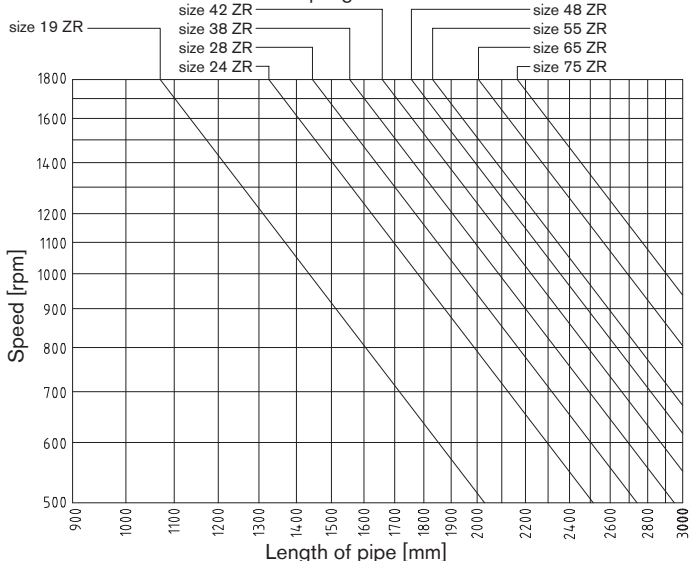
ROTEX® Type ZR

Size	Finish bore ϕd		Dimensions [mm]						Intermediate pipe Torsional stiffness/m		Clamping screw Part 2.0		Clamping screw Component 7.5/7.6		LZR; LZH	min. LR1	min. LR2	Locking screw G1	Cone bore dp [mm]	Axial displacement [mm]	Angular displacement [degrees]
	Part 1a	Part 7.5/7.6	DH	$l_1; l_2$	$x_1; x_2$	E	s	b	R_A	$C^{(2)}$ [Nm ² /rad]	M_1	T_A [Nm]	M_2	T_A [Nm]							
19	25	20	40	25	17,5	16	2,0	12	$\emptyset 20 \times 3$	954,9	M6	14	M6	10	LZR; LZH LR1 + 2 • l1 LR2 + 2 • x1/x2	110	97	M6	4,0	1,2	0,9
24	35	28	55	30	22,5	18	2,0	14	$\emptyset 30 \times 4$	4522	M6	14	M6	14		128	111	M8	5,5	1,4	0,9
28	40	38	65	35	25,5	20	2,5	15	$\emptyset 35 \times 4$	7611	M8	35	M8	35		145	129	M10	7,0	1,5	0,9
38	48	45	80	45	35,5	24	3,0	18	$\emptyset 40 \times 4$	11870	M8	25	M8	35		180	157	M12	8,5	1,8	1,0
42	55	55	95	50	39,0	26	3,0	20	$\emptyset 45 \times 4$	17487	M10	49	M10	69		198	174	M12	8,5	2,0	1,0
48	62	60	105	56	45,0	28	3,5	21	$\emptyset 50 \times 4$	24648	M12	86	M12	120		217	190	M16	12	2,1	1,1
55	74	70	120	65	50,0	30	4,0	22	$\emptyset 55 \times 4$	33544	M12	120	M12	120		242	220	M16	12	2,2	1,1
65	80	80	135	75	60,0	35	4,5	26	$\emptyset 65 \times 5$	68329	M12	120	M12	120		281	250	M16	12	2,6	1,2
75	95	90	160	85	67,5	40	4,0	30	$\emptyset 75 \times 5$	108000	M16	295	M16	295		318	285	M16	12	3,0	1,2

¹⁾ For inquiries and orders please mention the shaft distance dimension LR1/LR2 along with the maximum speed to review the critical bending speed.
²⁾ Torsion spring stiffness with a length of 1 m of intermediate pipe
 Finish bore acc. to ISO fit H7, feather keyway acc. to DIN 6885 sheet 1 - JS9
 Friction torques of clamping hubs have to be taken into account. Please order dimension sheet No. 583613.

Not permissible for crane and hoisting gear drives

Diagramme for coupling selection:



Ordering example:	ROTEX® 38	ZR	1200	98 Sh-A-GS	7.5	$\emptyset 38$	7.5	$\emptyset 30$
	Coupling size	Type	Shaft distance dim. LR1/LR2	Spider hard- ness	Hub type	Finish bore	Hub type	Finish bore