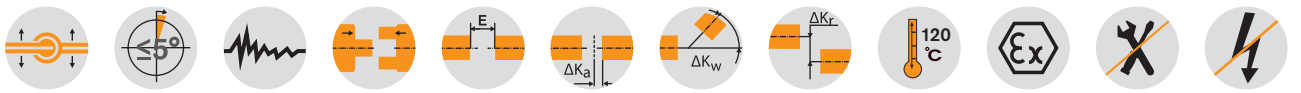
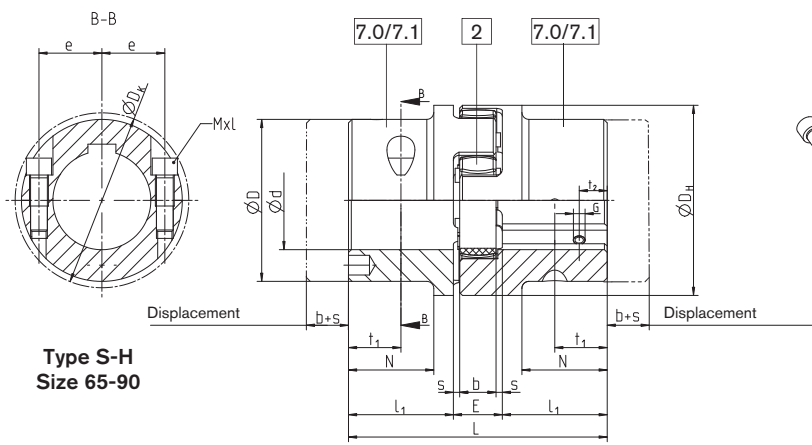
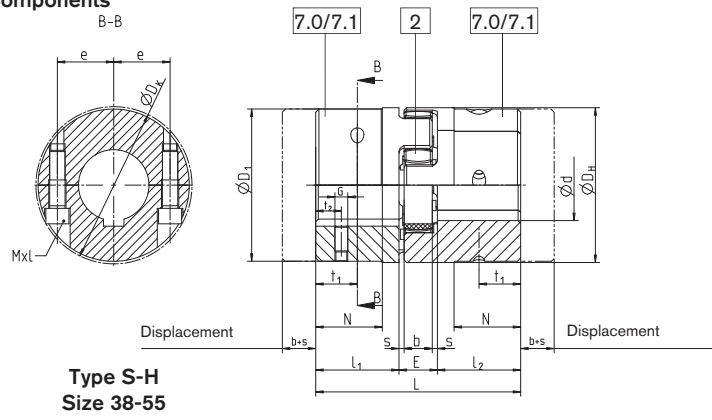


# Drop-out center design coupling with SPLIT hubs



## Components



## ROTEX® Type S-H

Size	Finish bore Ød [mm]		Dimensions [mm]													Cap screws DIN EN ISO 4762	
	minimum	maximum	L	l1; l2	E	b	s	DH	D1	DK	N	e	t1	t2	G	Mxl	Tightening torque TA [Nm]
38	24	45	114	45	24	18	3	80	78	83,5	37	30	22,5	15	M8	M8x30	34
42	24	55	126	50	26	20	3	95	94	97	40	30	25			M10x30	67
48	24	60	140	56	28	21	3,5	105	104	108,5	45	35	28			M12x35	115
55	24	70	160	65	30	22	4	120	118	122	52	40	32,5	20	M10	M12x40	115
	24	70	185	75	35	26	4,5	135	115	123,5	61	45	37,5			M12x40 M12x45	115
65	40	80	210	85	40	30	5	160	135	147	69	51	42,5	25		M16x50	290
	80	90							160	158		57					
90	40	90	245	100	45	34	5,5	200	160	176	81	60	50	30	M12	M20x60	560
	90	110							200	197		72					

7.0= SPLIT hub without feather keyway  
7.1= SPLIT hub with feather keyway

**Ordering example:**

ROTEX® 38	S-H	98 Sh-A	7.1	Ø 38	7.1	Ø30
Coupling size	Type	Spider hardness	Hub type	Finish bore	Hub type	Finish bore