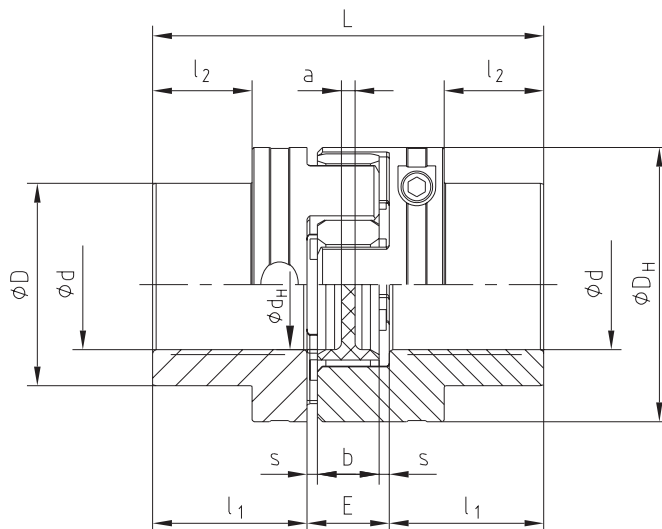
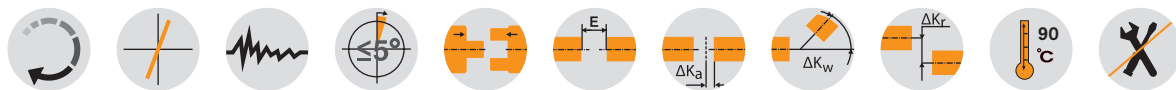


# Integrated hydraulic clamping system



## ROTEX® GS P ETP®

Size	Torque of spider $T_{KN}$ [Nm] <sup>1)</sup>			Dimensions [mm]											Screw		Weight per hub with max. bore [kg]
	92 Sh-A	98 Sh-A	64 Sh-D	"max. bore Ø"	DH <sup>2)</sup>	dH	L	l <sub>1</sub>	l <sub>2</sub>	l <sub>3</sub>	E	b	s	a	M	T <sub>A</sub> [Nm]	
24	35	60	75	24	55	27	78	30	16	30	18	14	2	3	M6	5	0,33
28	95	160	200	32	65	30	90	35	20	35	20	15	2,5	4	M6	5	0,53
38	190	325	405	40	80	38	114	45	29	45	24	18	3	4	M6	5	0,98
42	265	450	560	48	95	46	126	50	34	50	26	20	3,5	4	M6	5	1,51

<sup>1)</sup> Other spiders/selection on request

<sup>2)</sup>  $\phi D_H + 2$  mm with high speeds for expansion of spider

## Review of shaft-hub-connection: Friction torques for hub type ROTEX® GS P ETP®

Size	Tolerance fit	Bore diameter d / collar diameter D															
		Ø 15 / Ø 24	Ø 16 / Ø 26	Ø 19 / Ø 30	Ø 20 / Ø 32	Ø 24 / Ø 39	Ø 25 / Ø 40	Ø 28 / Ø 44	Ø 30 / Ø 47	Ø 32 / Ø 50	Ø 35 / 55	Ø 38 / Ø 59	Ø 40 / Ø 62	Ø 42 / Ø 65	Ø 45 / Ø 70	Ø 48 / Ø 74	
24	F6 / k6	42	50	70	80	125											
28		50	60	80	95	150	160	210	230	250							
38						220	230	310	350	380	450	570	610				
42							270	360	410	440	540	660	730	820	940	1100	

ETP® is a registered trademark by ETP® Transmission AB.

### Ordering example:

ROTEX® GS P ETP	98 Sh-A-GS	d 20	GS-ETP - Ø 24		GS-ETP - Ø 20	
Coupling size	Spider hardness	Optional: Bore in spider	Hub type	Finish bore	Hub type	Finish bore