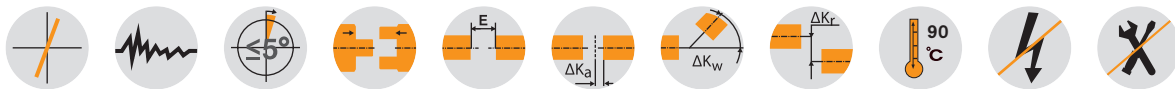


Clamping system for hollow shaft connection



ROTEX® GS expansion hub						Material of expansion hub aluminium/material of clamp pin stainless steel											
Size	Spider torque T_{KN} [Nm] ²⁾					Dimensions [mm]											
	80 Sh-A	92 Sh-A	98 Sh-A	64 Sh-D	72 Sh-D	D_1 ³⁾	D_2	D_H	l_1 ³⁾	l_2 ¹⁾	l_4 ³⁾	l_5 ³⁾	l_6	L ¹⁾	E	b	s
9	1,8	3,0	5,0	6,0	-	10	-	20	20	20	11	-	0	40	10	8	1,0
12	3,0	5,0	9,0	12,0	-	10	20	25	19	11	14	1,5	2	42	12	10	1,0
14	4,0	7,5	12,5	16,0	-	12	24	30	18,5	11	12,5	3	2	42,5	13	10	1,5
19	6,0	12,0	21,0	26,0	-	20	35	40	28	25	20	1	0	69	16	12	2,0
24	-	35	60	75	97	25	45	55	38	30	30	1	4	86	18	14	2,0
28	-	95	160	200	260	35	55	65	44	35	36	1	5	99	20	15	2,5

¹⁾ Expansion hub can be combined with other hub designs as a counter side, too. l_2 depending on hub design. Other hub types see page 124

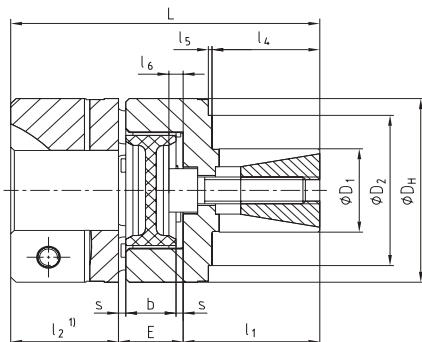
²⁾ For selection see page 18 et seqq.

³⁾ The dimensions D_1 , l_1 , l_4 and l_5 are examples. Other dimensions on customers' request.

Review of shaft-hub-connection: Friction torques for hub type 9.0*						
Size	D_1	D_2	l_1	l_4 ³⁾	l_5	Friction torque [Nm]
9	10	-	20	11	-	6,4
12	10	20	19	14	1,5	7,7
14	12	24	18,5	12,5	3	7,7
19	20	35	28	20	1	35,7
24	25	45	38	30	1	82
28	35	55	44	36	1	182

* The transmittable torques of the clamping connection consider the dimensions D_1 , D_2 , l_4 and l_5 as specified with steel being the material of the hollow shaft.

ROTEX® GS expansion hub type 9.0 with clamping hub ¹⁾

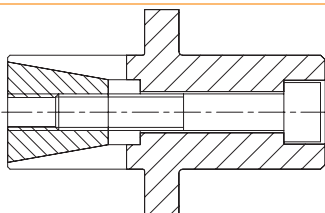


ROTEX® GS expansion hub for axis of belt

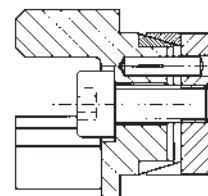


Special types for hollow shaft connections

Shaft extension



ROTEX® GS hub with CLAMPEX® KTR 150



Ordering example:	ROTEX® GS 24	98 Sh-A-GS	d20	9.0 - Ø 24		2.5 - Ø 20	
	Coupling size	Spider hardness	Optional: Bore in spider	Hub type	D_1	Hub type	Finish bore