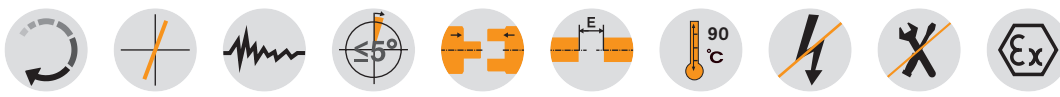
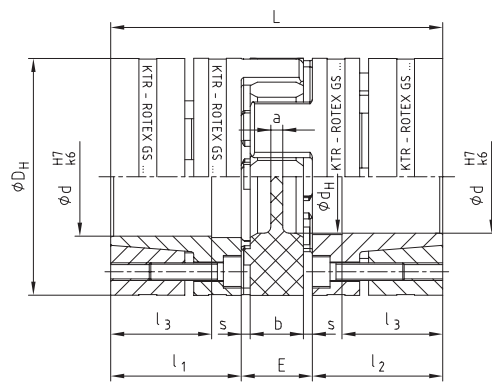


Integrated clamping system made of steel



Tack thread M1 between clamping screws



ROTEX® GS clamping ring hubs made of steel

Size	Spider torque T _{KN} [Nm] ¹⁾			Dimensions [mm]										Clamping screws DIN EN ISO 4762				Weight per hub with max. bore [kg]	Mass moment per hub with max. bore [kg m ²]
	98 Sh-A	64 Sh-D	72 Sh-D	maxi.d	D _H ²⁾	d _H	L	l ₁ ; l ₂	l ₃	E	b	s	a	M	Number z	T _A [Nm]	M ₁		
19	21	26	-	20	40	18	66	25	18	16	12	2,0	3,0	M4	6	4,1	M4	0,179	0,44 x 10 ⁻⁴
24	60	75	97	28	55	27	78	30	22	18	14	2,0	3,0	M5	4	8,5	M5	0,399	1,91 x 10 ⁻⁴
28	160	200	260	38	65	30	90	35	27	20	15	2,5	4,0	M5	8	8,5	M5	0,592	4,18 x 10 ⁻⁴
38	325	405	525	48	80	38	114	45	35	24	18	3,0	4,0	M6	8	14	M6	1,225	12,9 x 10 ⁻⁴
42	450	560	728	51	95	46	126	50	35	26	20	3,0	4,0	M8	4	41	M8	2,30	31,7 x 10 ⁻⁴
48	525	655	852	55	105	51	140	56	41	28	21	3,5	4,0	M10	4	69	M10	3,08	52,0 x 10 ⁻⁴
55	685	825	1072	70	120	60	160	65	45	30	22	4,0	4,5	M10	4	69	M10	4,67	103,0 x 10 ⁻⁴
65	940	1175	1527	70	135	68	185	75	55	35	26	4,5	4,5	M12	4	120	M12	6,70	191,0 x 10 ⁻⁴
75	1920	2400	-	80	160	80	210	85	63	40	30	5,0	5,0	M12	5	120	M12	9,90	396,8 x 10 ⁻⁴
90	3600	4500	-	105	200	104	245	100	75	45	34	5,5	6,5	M16	5	295	M16	17,7	1136 x 10 ⁻⁴

¹⁾ Other spiders/selection see page 18 et seqq.
²⁾ ØD_H + 2 mm with high speeds for expansion of spider

Review of shaft-hub-connection: Friction torques for hub type 6.0 steel

Size		Ø10	Ø11	Ø14	Ø15	Ø16	Ø19	Ø20	Ø24	Ø25	Ø28	Ø30	Ø32	Ø35	Ø38	Ø40	Ø42	Ø45	Ø48	Ø50	Ø55*	Ø60*	Ø65*	Ø70*	Ø80*	Ø90*	Ø95*	Ø100*	Ø105*	
19	H7/k6	27	32	69	84	57	94	110																						
	H7/h6	15	18	57	74	38	76	94																						
24	H7/k6			70	87	56	97	114	116	133	192																			
	H7/h6			55	74	32	72	93	84	103	173																			
28	H7/k6				108	131	207	148	253	285	315	382	330	433	503															
	H7/h6				74	97	172	94	207	242	267	343	260	377	453															
38	H7/k6								208	353	395	439	531	463	603	593	689	793	776											
	H7/h6								136	290	337	373	476	367	525	491	601	721	677											
42	H7/k6									445	495	595	526	678	671	775	718	872	1043	1061										
	H7/h6									387	429	540	429	600	569	687	599	773	970	978										
48	H7/k6											616	704	899	896	1030	962	1160	1379	1222	1543									
	H7/h6											513	590	806	775	924	822	1042	1290	1073	-									
55	H7/k6													863	856	991	918	1119	1110	1247	1277	1665	1605	2008						
	H7/h6													750	710	863	750	976	934	1089	-	-	-	-						
65	H7/k6															1446	1355	1637	1635	1827	1887	2429	2368	2930						
	H7/h6															1275	1135	1447	1404	1619	-	-	-	-						
75	H7/k6																1710	2053	2059	2294	2384	3040	2983	3664	4293					
	H7/h6																1460	1836	1797	2056	-	-	-	-						
90	H7/k6																				3845	4249	4794	5858	5900	7036	8047	9247	9575	10845
	H7/h6																				3445	-	-	-	-	-	-	-	-	-

* From Ø55 tolerance G7/m6
 With bigger clearance the torque is reduced. For the stiffness calculation of the shaft/hollow shaft see KTR standard 45510 at our homepage at www.ktr.com.

Ordering example:

ROTEX® GS 24	98 Sh-A-GS	d20	6.0 steel	Ø24	6.0 steel	Ø20
Coupling size	Spider hardness	Optional: Bore in spider	Hub type	Finish bore	Hub type	Finish bore