

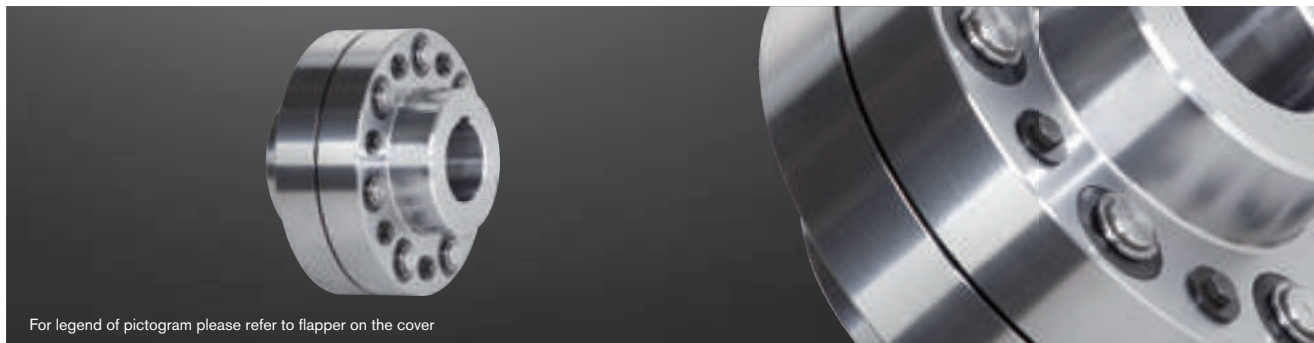
REVOLEX® KX-D

Flexible pin & bush coupling

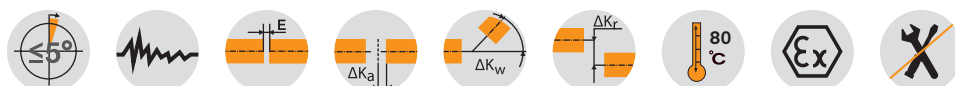
Flexible jaw and pin & bush couplings

ROTEX®

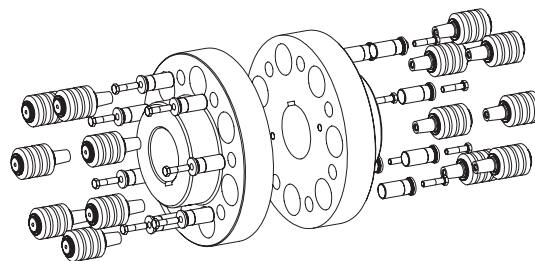
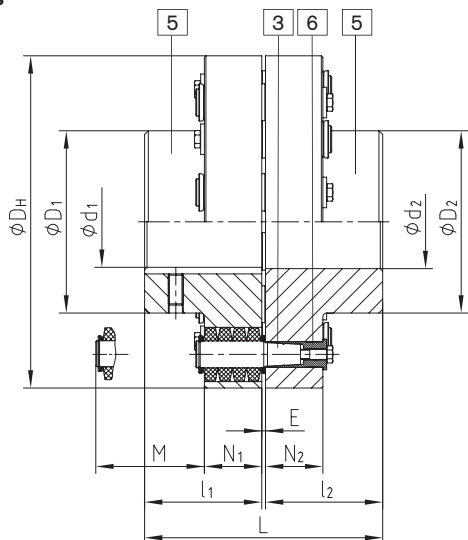
Material steel



For legend of pictogram please refer to flapper on the cover



Components



Components
Type KX-D
5 = Hub part 5
3 = Pins complete
6 = KX-D sleeve (hardened and corrosion-resistant)

POLY-NORM®

POLY

REVOLEX® Type KX-D													
Size	Torque ¹⁾ [Nm]		Max. speed ²⁾ [rpm]	Finish bore [min. - max.] d ₁ ; d ₂	Dimensions [mm]							Mass moments of inertia ³⁾ [kgm ²]	Approx. weight ³⁾ [kg]
	TKN	TKmax.			L	l ₁ ; l ₂	E	D _H	D ₁ ; D ₂	N ₁ ; N ₂	M*		
KX-D 75	3800	7600	4500	0-90	193	95	3	255	136	56	76	0,325	39
KX-D 85	5000	10000	4175	0-100	213	105	3	274	152	56	76	0,440	46
KX-D 95	6600	13200	3825	0-110	227	112	3	298	168	56	76	0,624	56
KX-D 105	8650	17300	3475	0-120	237	117	3	330	180	56	76	0,907	80
KX-D 120	14110	28220	3100	0-140	270	132	6	370	206	76	100	1,867	124
KX-D 135	18690	37380	2725	70-160	300	147	6	419	230	76	100	3,144	165
KX-D 150	23100	46200	2500	82-185	336	165	6	457	256	76	100	4,573	205
KX-D 170	36900	73800	2150	95-220	382	188	6	533	292	92	130	10,259	322
KX-D 190	48210	96420	1900	110-245	428	211	6	597	330	92	130	16,601	431
KX-D 215	61900	123800	1725	125-275	480	237	6	660	368	92	130	25,495	559
KX-D 240	92030	184060	1550	140-310	534	264	6	737	407	122	170	50,147	833
KX-D 265	121900	243800	1375	160-350	590	292	6	826	457	122	170	80,796	1099
KX-D 280	158800	317600	1225	180-385	628	311	6	927	508	122	170	129,979	1436
KX-D 305	191060	382120	1150	180-405	654	324	6	991	533	122	170	170,016	1669
KX-D 330	251200	502400	1075	200-435	666	330	6	1067	572	122	170	227,451	1954
KX-D 355	300000	600000	975	225-450	721	356	9	1156	610	164	220	415,259	2451
KX-D 370	400000	800000	900	225-530	773	382	9	1250	720	164	220	584,686	2925
KX-D 470	510000	1020000	855	240-520	969 ⁴⁾	480 ⁴⁾	9	1340	705 ⁴⁾	164	220	785,489	3631
KX-D 520	715000	1430000	760	240-520 ⁴⁾	1089 ⁴⁾	540 ⁴⁾	9	1540	780 ⁴⁾	164	220	1264,725	5155
KX-D 590	950000	1900000	680	260-590 ⁴⁾	1212 ⁴⁾	600 ⁴⁾	12	1735	885 ⁴⁾	164	220	2081,885	6895
KX-D 650	1220000	2440000	610	280-650 ⁴⁾	1332 ⁴⁾	660 ⁴⁾	12	1935	975 ⁴⁾	164	220	3228,297	8893

* Drop-out center dimension

¹⁾ Standard material NBR 80 Shore-A, for selection see page 14 et seqq. ²⁾ Higher speeds on request. ³⁾ Relating to max. bore ⁴⁾ Variable according to customer's requests

Finish bore acc. to ISO fit H7, feather keyway acc. to DIN 6885 sheet 1 - JS9.

If requested, coupling is dynamically balanced (semi-key balancing G 6.3 with speed on request of customer). For circumferential speeds exceeding V = 30 m/s, we would recommend dyn. balancing.

■ = pre-bored available from stock

Ordering example:	REVOLEX® KX-D 170	Stahl	Ø120	Ø150
	Size and type of coupling	Material	Finish bore	Finish bore

REVOLEX®