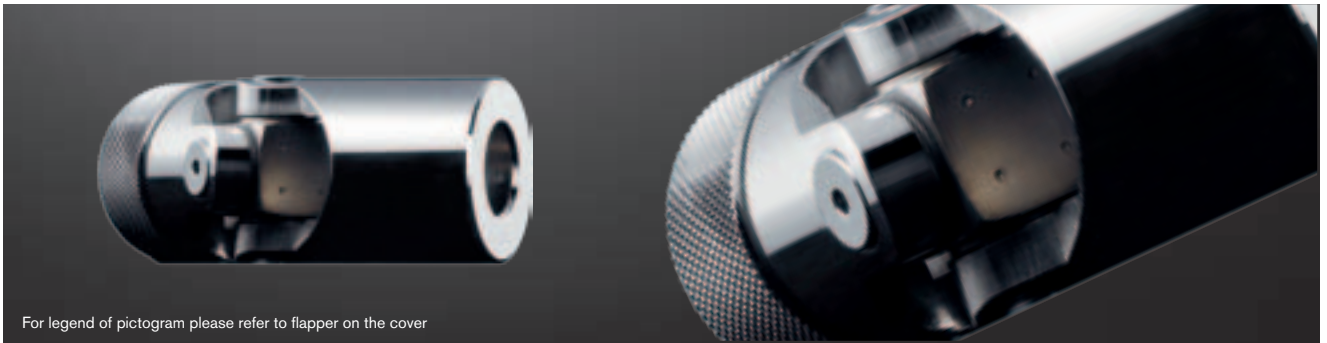
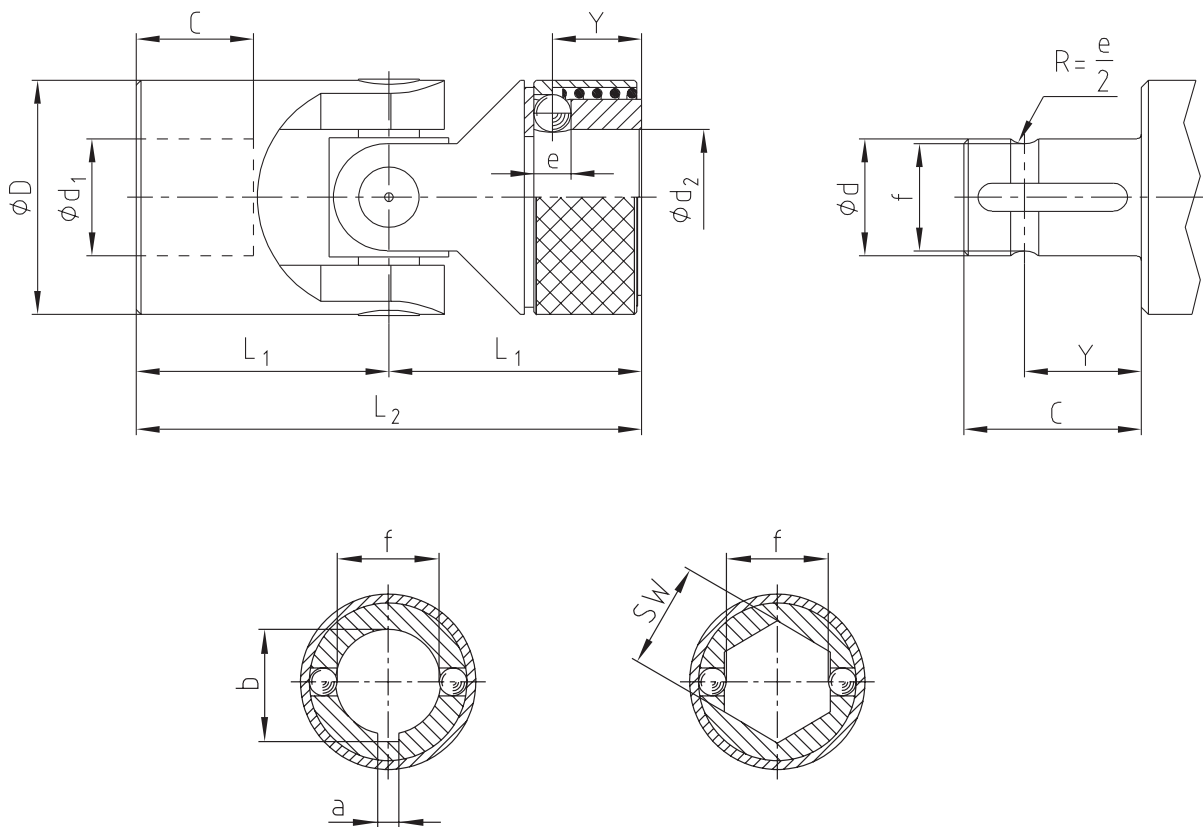


# KTR Precision joints type GR and HR

## Plain and needle bearing with quick locking



For legend of pictogram please refer to flapper on the cover



Type GR with plain bearing  $n_{max.} = 1000$  rpm and type HR with needle bearing  $n_{max.} = 4000$  rpm

Size		Dimensions [mm]											Weight [kg]
GR	HR	$d_1, d_2$ [H7]	D	$L_2$	$L_1$	C	Y	e	f	a [JS9]	b	SW [H8]	
02 GR	-	8	16	52	26	14	9,5	3,5	7,0	2	9,0	8	0,05
03 GR	03 HR	10	22	62	31	17	11,5	4,0	8,7	3	11,0	10	0,12
04 GR	04 HR	12	25	74	37	21	13,5	4,0	11,0	4	13,3	12	0,18
05 GR	05 HR	14	25	74	37	21	13,5	4,0	13,0	5	15,3	14	0,17
1 GR	1 HR	16	32	86	43	24	14,0	6,35	14,8	5	17,3	16	0,34
2 GR	2 HR	18	36	96	48	28	19,0	8,0	16,0	6	19,8	18	0,47
3 GR	3 HR	20	42	108	54	31	19,0	8,0	18,0	6	22,8	20	0,76
4 GR	4 HR	22	45	120	60	34	20,5	10,0	20,0	6	24,8	22	0,97
5 GR	5 HR	25	50	132	66	38	20,5	10,0	23,0	8	28,3	25	1,3
6 GR	6 HR	30	58	166	83	49	25,0	10,0	28,0	8	33,3	30	2,13

Ordering example:

03 HR	$d_1 = \text{Ø}10$	$d_2 = \text{Ø}10$ Nute DIN
Size/type of joint	Finish bore (H7)	Finish bore (H7) feather keyway acc. to DIN 6885 sheet 1 (JS9)