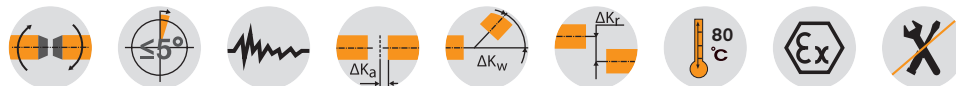
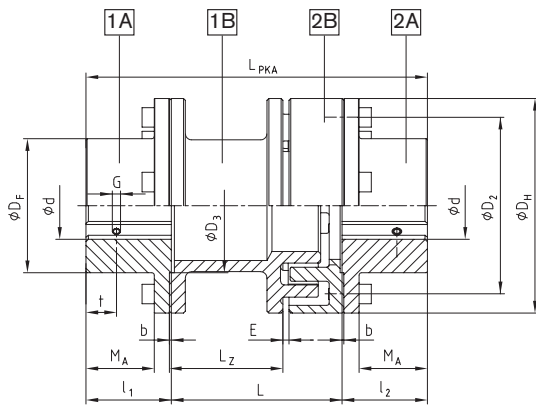


Drop-out center design coupling



Components



Components: Type PKA
 1.A/2A = Coupling flange (steel)
 1.B = Spacer (GJL)
 2B = Driving flange (GJL)
 A and 1B to be preferably used drive-sided

POLY Type PKA

Size	Rated torque T_{KN} [Nm]	Max. speed n [rpm]	Max. finish bore d [mm] part 1A/2A	Dimensions [mm]											Thread for setscrew			Weight [kg]	
				D_H	D_F	D_2	D_3	l_1, l_2	b	M_A	E	L	L_{PKA}	L_Z	G	t	T_A [Nm]		
8	42	5000	38	86	55	70	60	35	1,5	25,5	3	100	170	66	M5	15	2	3,04	
9	72	5000	45	97	70	85	70	41	1,5	30,5	3	100	182	63	M8	15	10	4,26	
												140	222	103					4,66
10	100	5000	50	107	78	93	80	46	1,5	35,5	4	100	192	61	M8	20	10	5,42	
												140	232	101					5,88
12	170	5000	60	131	95	113	90	55	1,5	43,0	4	100	210	55	M8	20	10	9,49	
												140	250	95					10,15
14	210	4800	70	142	105	125	100	60	1,5	48,0	4	100	220	54	M8	25	10	11,46	
												140	260	94					12,23
15	320	4300	70	157	110	135	110	65	1,5	49,5	4	140	270	93	M8	25	10	15,63	
												180	310	133					16,50
17	400	3800	80	176	125	150	110	70	1,5	54,5	4	100	240	53	M8	25	10	18,79	
												140	280	93					19,60
												180	320	133					20,41
20	820	3300	100	205	150	175	130	80	2,0	61,0	4	140	300	81	M8	30	10	30,96	
												180	340	121					32,18
												140	340	81					54,73
25	1600	2700	125	257	195	225	150	100	2,0	81,0	5	180	380	121	M12	40	40	56,50	
												250	450	191					59,60

Ordering example:

POLY	PKA	15	140	Ø38	Ø40
Coupling type	Type	Size	Drop-out center length	Finish bore part 1A	Finish bore part 2A