

# KTR-SI Compact Backlash-free overload systems

## Flange type

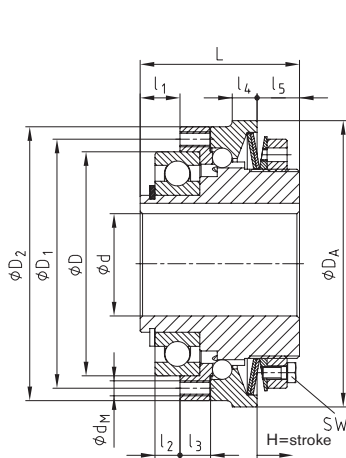


For legend of pictogram please refer to flapper on the cover

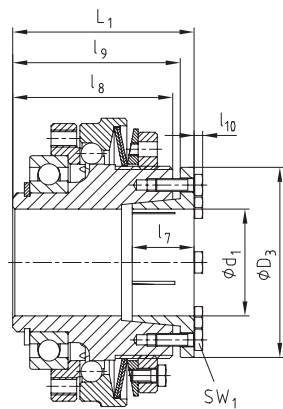


Hub type 1.0

Size 01 - 3

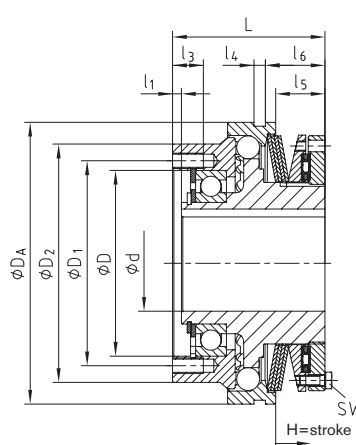


Hub type 4.5  
with taper bush  
Size 01 - 3

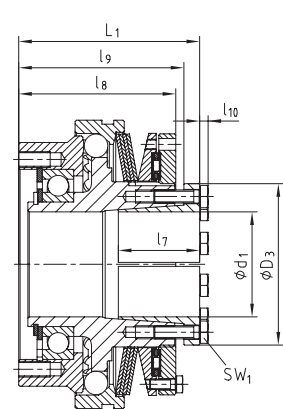


Hub type 1.0

Size 4



Hub type 4.5  
with taper bush  
Size 4



### Technical data – Dimensions

Size	Speed [rpm] <sup>1)</sup>	Torque [Nm]			Dimensions [mm]														
		T1	T2	T3	Bore		D <sup>h5</sup>	D1	D2	DA	l1	l2	l3	l4	l5	l6	L	dM	SW
01	4000	3-14	6-28	13-56	d	47	56	65	70	8	7	7,5	7	12	-	40	8xM4	7	1,2
0	3000	9-35	18-70	40-140	10-25	62	71	80	85	11	7	8,0	8	14	-	48	8xM5	7	1,5
1	2500	19-65	38-130	78-260	14-30	75	85	95	100	14	9	10,5	9	16	-	59	8xM6	8	1,8
2	2000	35-110	80-220	160-440	18-40	90	100	110	115	16	10	12	10	17	-	64	8xM6	10	2,0
3	1200	80-185	160-370	320-740	24-50	100	116	130	135	18	10	12	12	21	-	75	8xM8	10	2,2
4	400	230-730	460-1590	960-3100	40-75	145 <sup>h7</sup>	160	186	220	7	-	24	9	38,5	46,5	119	6xM12	13	3,5

### Dimensions of hub type 4.5

Size	Bore <sup>2)</sup>		Dimensions [mm]							SW <sub>1</sub>	T <sub>A</sub> [Nm]
	d <sub>1</sub>	D <sub>3</sub>	l <sub>7</sub>	l <sub>8</sub>	l <sub>9</sub>	l <sub>10</sub>	L <sub>1</sub>				
01	10-20	40,5	26	40	42	2,8	47	7	3		
	19-25	42,0									
0	19-30	57	31	46	49	4,0	56	10	10		
	19-30	57								40	
1	32-40	64	31	57	60	3,5	67	8	5,9		
	32-40	64								29	
2	32-50	73,5	29	63	68,5	4,0	73	10	10		
	32-50	73,5								29	
3	55-60	89	44	75	78,0	4,0	85	10	10		
	55-60	89								44	
4	60-80	123	62	119	126	7	138	16	35		

<sup>1)</sup> See comments on page 230

<sup>2)</sup> For transmittable friction torques T<sub>R</sub> [Nm] of hub type 4.5 please refer to assembly instructions

### Ordering example:

KTR-SI Compact 2	DK	4.5	T2	d <sub>1</sub> Ø40	150 Nm
Type/size	Type [DK/SK]	Hub type	Disk springs	Bore	Torque set