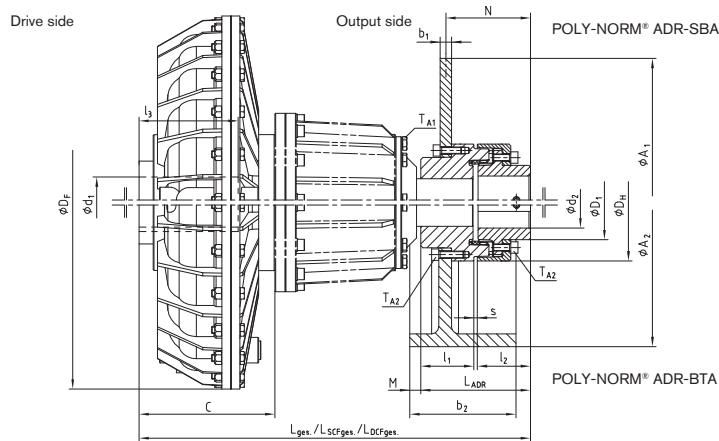


Fluid couplings ALFA

with POLY-NORM® ADR-SBA / ADR-BTA (inner wheel drive) for holding brakes



— • • • — optionally: with small or large delay chamber (SCF / DCF)

Dimensions of adapter shaft S [mm]			
Size	d_s	L_s	T
10	19	35	25
20	24	44	32
30/30P	38	63	45
40P	48	76	55
50/55	55	92	65
60/65	60	110	80
70P/75P	70	122	90
80P/85P	80	145	110

Selection criteria:
IEC standard motor: 4 poles 1500 rpm (50 Hz)
Shock factor: 1.5 (moderate shocks)
Ambient temperature: - 20 to + 40 °C
Start-up frequency: < 10/h

Fluid coupling ALFA K-S-[SCF/DCF]-ADR-SBA / ADR-BTA																	
Size		Dimensions [mm]												T [Nm]			
K	ROTEX®	d_1	d_2 max	D_F	D_1	D_{H1}	l_1/l_2	l_3	S	L_{ADR}	C	L			W	T_{A1}	T_{A2}
												t.	SCF _L	DCF _L			
50	60	42	56	430	80	118	60	110	5	125	179	337	417	492	14	50,5	25
		48															
		55															
		60															
55	65	65	60	430	86	129	65	110	5	135	211	374	454	529	11	50,5	49
		140															
		140															
		140															
60	75	60	68	520	98	158	75	140	5	155	192	382	472	552	16	50,5	49
		140															
		140															
		140															
65	85	65	78	520	112	182	85	140	5	175	240	445	535	615	18	50,5	86
		140															
		140															
		170															
70P	90	80	85	640	122	200	90	170	5	185	240	457	567	682	26	212,0	210
		170															
75P	100	80	95	640	136	224	100	170	6	206	265	503	613	225	28	212,0	210
		170															
80P	125	110	115	810	168	280	125	210	6	256	270	561	679	779	35	291,0	210

POLY-NORM® ADR-SBA / ADR-BTA								
POLY-NORM® Size	60	65	75	85	90	100	125	
$\emptyset A1 \times b1 / \emptyset A2 \times b2$	Dimensions [mm] N / M							
315 x 16	26	29	35,5					
400 x 16	26	29	35,5	41,5	42	48		
500 x 16	26	29	35,5	41,5	42	48	64	
630 x 20						46	62	
710 x 20						46	62	
800 x 25						43,5	59,5	
900 x 25							59,5	
250 x 95	3	0						
315 x 118	12	9	2,5	-3,5				
400 x 150	25	22	15,5	9,5	9	3		
500 x 190						18	-2	
630 x 236							20	

Ordering example	ALFA	65	K	S	DCF	ADR-SBA	400x16	$\emptyset 75$	$\emptyset 70$	145 °C	—
Type	Coupling size	Design	Adapter-shaft	Optionally: e. g. large delay chamber	Attachment coupling: e. g. POLY-NORM® ADR-SBA	Brake disk/drum	Bore d_1	Bore d_2	FP	Other options	