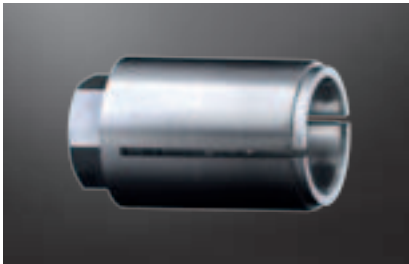


Series on request

SPH Clamping sleeve



Self-centering

- Fast assembly and disassembly via one screw only
- Suitable for small hub dimensions
- Applications: sprockets, toothed belt pulleys that are mounted on the shaft end
- Please order dimension sheet M548658

SPB Clamping sleeve



Self-centering

- Assembly via one central nut
- Suitable for small hub dimensions
- Applications: medical equipment, measuring and control technology, small gearboxes
- Please order dimension sheet M548677

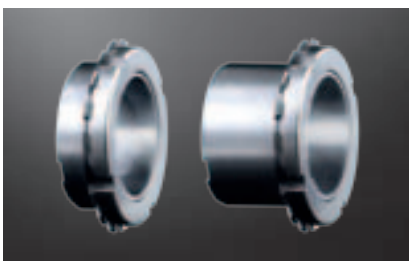
KTR 401



Self-centering, short design

- Clamping element for highest load
- Specifically suitable for vibratory torques
- Typical applications: flywheels, belt drums
- Smaller dimensions than with KTR 400
- Please order dimension sheet M367699

KTR 125 und KTR 125.1



KTR 125

Not self-centering,
short design

KTR 125.1

Not self-centering,
long design

- Clamping element for applications with low demands
- Very easy assembly
- Please order dimension sheet M367700