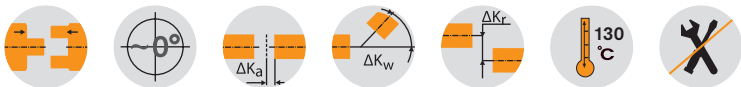


Axial plug-in, extremely short design, carbon-fibre reinforced material



BoWex® FLE-PAC – Dimensions/nominal dimension to SAE

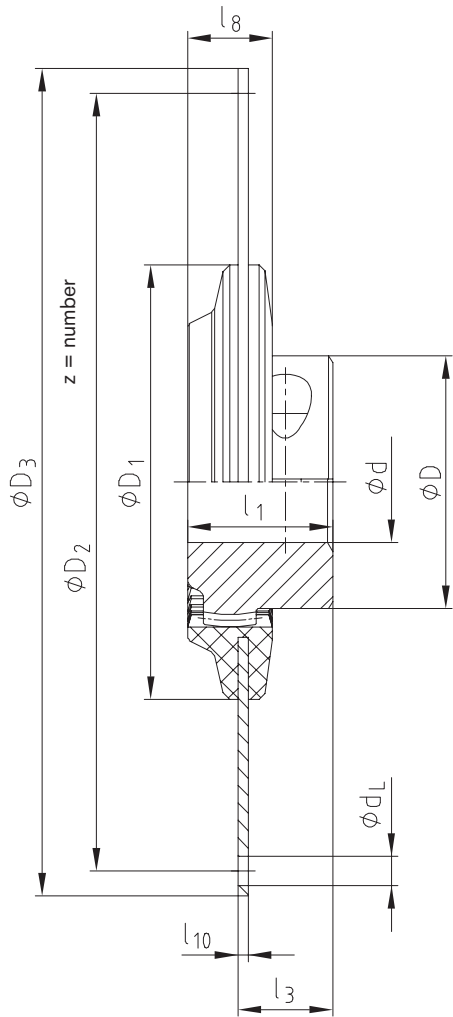
Size	Pilot bore	Finish bore d		Dimensions [mm]							Special length l ₁ max.	Nominal dimension to SAE (D ₃)						Max. axial displacement [mm]
		min.	max.	D	D ₁	l ₁	l ₃	l ₇	l ₈	l ₁₀		6 1/2"	7 1/2"	8"	10"	11 1/2"	14"	
48 / T 48	13	20	48	68	110	50	35	46	25	3	up to 60	●	●	●	●			± 3
T55	17	20	55	85	108	50	32	42	28	3		●	●	●	●			± 3
65 / T 65	21	30	65	96	165	55	36	46	32	4	up to 70			●	●			± 3
80 / T 80	31	35	80	124	220	90	72	76	35	4	-				●	●	●	± 3
100 / T 100	38	40	100	152	280	110	85	102	47	5	-					●	●	± 3
125 / T 125	45	50	125	192	250	140	113	140	50	28	-					●	●	± 3

Special flange dimensions deviating from SAE standard are also available.

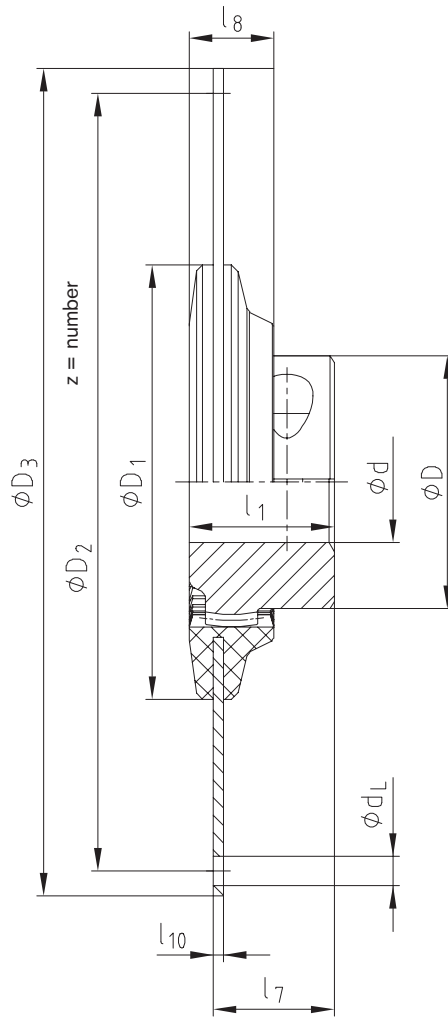
Technical data of BoWex® FLE-PAC – Torques/Weights/Mass moments of inertia/Torsion spring stiffness

Size	Torque T _K [Nm]			Weight / Mass moment of inertia I	Hub with max. bore Ø	FLE-PAC flanges according to SAE						Dynamic torsion spring stiffness with + 60 °C / ψ = 0.45 [Nm/rad]						
	TKN	TK max.	TKW			6 1/2"	7 1/2"	8"	10"	11 1/2"	14"	0,30 TKN	0,50 TKN	0,75 TKN	1,00 TKN			
48	240	600	120	[kg]	0,79	0,77	0,98	1,19	1,73									
				[kgm ²]	0,0007	0,0049	0,0077	0,0109	0,0221				57 x 10 ³	89 x 10 ³	109 x 10 ³	126 x 10 ³		
T 48	300	750	150	[kg]	0,79	0,77	0,98	1,19	1,73									
				[kgm ²]	0,0007	0,0049	0,0077	0,0109	0,0221				74 x 10 ³	115 x 10 ³	141 x 10 ³	164 x 10 ³		
T55	450	1125	225	[kg]	1,20	0,74	0,95	1,16	1,7									
				[kgm ²]	0,0016	0,0049	0,0077	0,0109	0,0222				150 x 10 ³	230 x 10 ³	285 x 10 ³	328 x 10 ³		
65	650	1600	325	[kg]	1,50			1,48	2,20	2,83								
				[kgm ²]	0,0027			0,0145	0,0294	0,0467			164 x 10 ³	286 x 10 ³	365 x 10 ³	411 x 10 ³		
T 65	800	2000	400	[kg]	1,60			1,48	2,20	2,83								
				[kgm ²]	0,0035			0,0145	0,0294	0,0467			202 x 10 ³	328 x 10 ³	420 x 10 ³	473 x 10 ³		
80	1200	3000	600	[kg]	5,20				2,27	2,90	5,20							
				[kgm ²]	0,0151				0,0312	0,0485	0,1462			378 x 10 ³	620 x 10 ³	790 x 10 ³	985 x 10 ³	
T 80	1500	3750	750	[kg]	5,20				2,27	2,90	5,20							
				[kgm ²]	0,0151				0,0312	0,0485	0,1462			430 x 10 ³	700 x 10 ³	900 x 10 ³	1120 x 10 ³	
100	2050	5150	1025	[kg]	9,37					3,35	6,22							
				[kgm ²]	0,0401					0,0606	0,1828			600 x 10 ³	810 x 10 ³	1050 x 10 ³	1280 x 10 ³	
T 100	2500	6250	1250	[kg]	9,37					3,35	6,22							
				[kgm ²]	0,0401					0,0606	0,1828			700 x 10 ³	900 x 10 ³	1170 x 10 ³	1400 x 10 ³	
125	4250	10700	2125	[kg]	19,73					2,09	9,85							
				[kgm ²]	0,1359					0,043	0,306			1280 x 10 ³	1885 x 10 ³	2280 x 10 ³	2665 x 10 ³	
T 125	5300	13250	2650	[kg]	19,73					2,09	9,85							
				[kgm ²]	0,1359					0,043	0,306			1600 x 10 ³	2250 x 10 ³	2700 x 10 ³	3200 x 10 ³	

Short mounting



Long mounting



**Flange dimensions
acc. to SAE J 620 [mm]**

Size	D ₃	D ₂	z	d _L
6 1/2"	215,9	200,02	6	9
7 1/2"	241,3	222,25	8	9
8"	263,52	244,47	6	11
10"	314,32	295,27	8	11
11 1/2"	352,42	333,37	8	11
14"	466,72	438,15	8	14