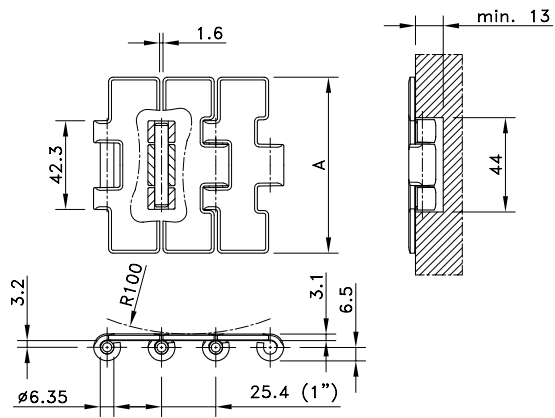


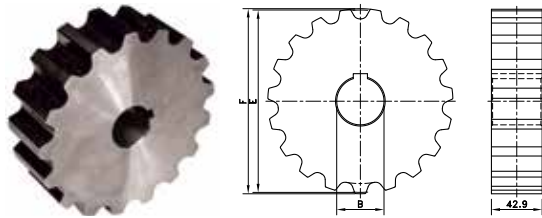
# Straight Run Single Hinge Max-Line 1"



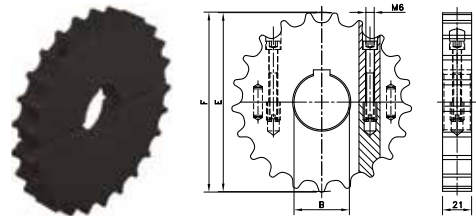
Chain Type	Code Number	Plate Width		Weight kg/m	Surface Flatness (max.) mm	Polished Hinge Eyes	Working Load (max.) N
		mm	inch				
<b>Opti-Plus</b>							
SSC 512-K217	10.011.61.04	55.1	2.17	2.29	0.18	no	5000
SSC 512-K236	10.011.61.07	59.9	2.36	2.41	0.18	no	
SSC 512-K250	10.011.61.05	63.5	2.50	2.49	0.18	no	
SSC 512-K283	10.011.61.09	71.9	2.83	2.65	0.18	no	
SSC 512-K325	10.011.61.11	82.5	3.25	2.86	0.18	no	
SSC 512-K350	10.011.61.12	88.9	3.50	3.01	0.18	no	
SSC 512-K400	10.011.61.13	101.6	4.00	3.26	0.25	no	

Standard length: 3.048 m - 10 feet (120 links).

# ST 512



# SS MINI



Sprocket Type	Code Number	Number of Teeth	Bore	Pitch Diameter	Outside Diameter	Width (Teeth)	Hub Width	Hub Diameter
			B	E	F	C	A	H
			mm/inch	mm	mm	mm	mm	mm

### Classic Sprockets, Machined - ST 512

Metric Bores								
ST512 13-20	753.93.77	13	20*	106.1	107.4	42.9	42.9	-
ST512 15-20	753.93.78	15	20*	122.2	123.9			
ST512 17-20	753.93.79	17	20*	138.2	140.3			
ST512 19-20	753.93.80	19	20*	154.3	156.6			
ST512 21-20	753.93.81	21	20*	170.4	172.9			
ST512 23-20	753.93.82	23	20*	186.5	189.2			
ST512 25-20	753.93.83	25	20*	202.7	205.4			

\* Pre-bore

For steel chain series: **Rexnord:** 512, 581 M.

### Split Sprockets, Machined - SS Mini

Metric Bores								
SS MINI 21-25	753.67.61	21	25	129.3	130.0	21.0	21.0	-
SS MINI 21-30	753.67.62	21	30					
SS MINI 21-35	753.67.63	21	35					
SS MINI 21-40	753.67.64	21	40					
SS MINI 21-50	753.67.65	21	50					
SS MINI 25-25	753.67.81	25	25	153.2	153.9			
SS MINI 25-30	753.67.82	25	30					
SS MINI 25-35	753.67.83	25	35					
SS MINI 25-40	753.67.84	25	40					
SS MINI 25-50	753.67.85	25	50					

For steel chain series: **Rexnord:** 812-narrow, mini hinge.