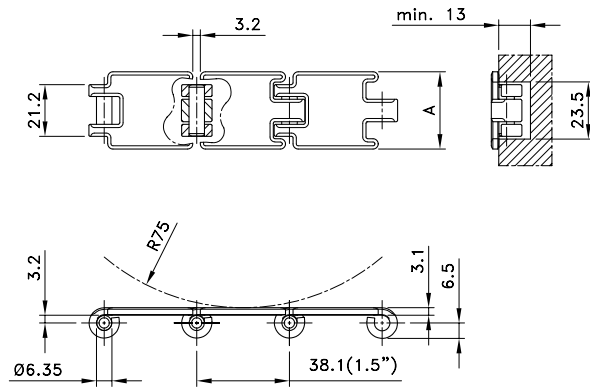


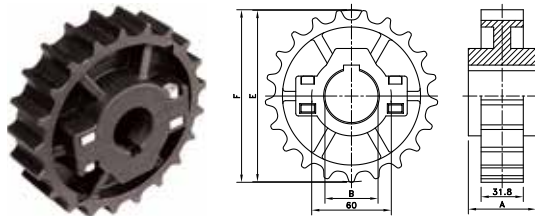
Straight Run Mini Hinge



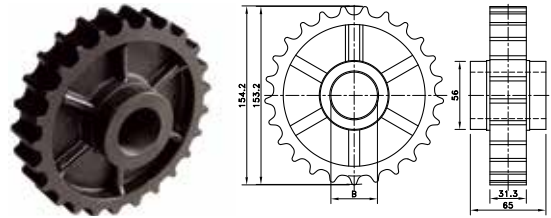
Chain Type	Code Number	Plate Width		Weight	Surface Flatness (max.)	Polished Hinge Eyes	Working Load (max.)
		A					
		mm	inch	kg/m	mm		N
60-Series							
60 S 11*	762.50.11	31.8	1.25	1.07	0.18	no	2500
60 S 13**	762.50.13	44.5	1.75	1.35	0.18	no	
66-Series							
66 S 11 XHB*	762.00.11	31.8	1.25	1.07	0.18	no	2500
66 S 13 XHB**	762.00.13	44.5	1.75	1.35	0.18	no	
Opti-Plus							
SSR 812-K125	10.010.21.01	31.8	1.25	1.07	0.18	no	2500
SSR 812-K175	10.010.21.02	44.5	1.75	1.35	0.18	no	
Carbon Steel							
SR 810-K125	10.010.73.01	31.8	1.25	1.07	0.40	no	3250
SR 810-K175	10.010.73.02	44.5	1.75	1.35	0.40	no	

* Packaging: three strands of 3.048 m - 10 feet (3 x 80 links) per box.

NS/NSX 881



NX 881



Sprocket Type	Code Number	Number of Teeth	Bore	Pitch Diameter	Outside Diameter	Width (Teeth)	Hub Width	Hub Diameter
			B	E	F	C	A	H
			mm/inch	mm	mm	mm	mm	mm

Split Sprockets and Idlers, Injection Moulded - NS/NSX 881

Sprockets, Metric Bores

NS881 21-25	L0881664501	21	25	129.3	129.5	31.8	51.0	60
NS881 21-30	L0881664511	21	30					
NS881 21-35	L0881664521	21	35					
NS881 21-40	L0881664531	21	40					
NS881 21-45	L0881664541	21	45					
NS881 23-25	L0881662821	23	25	141.2	142.0	31.8	51.0	60
NS881 23-30	L0881662831	23	30					
NS881 23-35	L0881662841	23	35					
NS881 23-40	L0881662851	23	40					
NS881 23-45	L0881662861	23	45					
NS881 25-25	L0881663351	25	25	153.2	154.2	31.3	65.0	56
NS881 25-30	L0881663361	25	30					
NS881 25-35	L0881663371	25	35					
NS881 25-40	L0881663381	25	40					
NS881 25-45	L0881663391	25	45					

Sprockets, Inch Bores*

NS881 21-1	L0881664551	21	1.00"	129.3	129.5	31.8	51.0	60
NS881 21-1¼	L0881664571	21	1.25"					
NS881 21-1½	L0881664591	21	1.50"					
NS881 23-1	L0881662921	23	1.00"	141.2	142.0	31.8	51.0	60
NS881 23-1¼	L0881662941	23	1.25"					
NS881 25-1	L0881663401	25	1.00"					
NS881 25-1¼	L0881663441	25	1.25"	153.2	154.2	31.3	65.0	56
NS881 25-1½	L0881663481	25	1.50"					

Idlers, Metric Bores

NSX881 21-25	L0881639842	21	25	129.3	129.5	31.8	51.0	60
NSX881 21-30	L0881612242	21	30					
NSX881 21-35	L0881612252	21	35					
NSX881 21-40	L08 81612262	21	40					
NSX881 23-25	L0881631332	23	25					
NSX881 23-30	L0881612272	23	30	141.2	142.0	31.8	51.0	60
NSX881 23-35	L0881612282	23	35					
NSX881 23-40	L0881612292	23	40					
NSX881 25-30	L0881609932	25	30					
NSX881 25-35	L0881600282	25	35					
NSX881 25-40	L0881609942	25	40	153.2	154.2	31.3	65.0	56
NSX881 25-45	L0881631222	25	45					

For steel chain series: **Rexnord:** 812 mini hinge, 812-TAB, 881, 8811 (all) MCC: single hinge TAB rubber top.

*Ask Customer service for minimum order quantity of sprockets with inch bores.

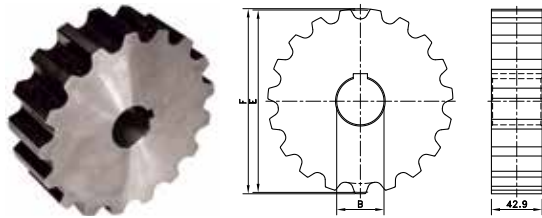
Classic Idlers, Injection Moulded - NX 881

Metric Bores

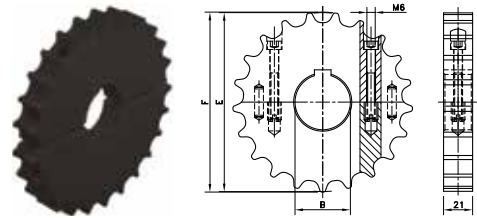
NX881 25-25	L0881620072	25	25	153.2	154.2	31.3	65.0	56
NX881 25-30	L0881666081	25	30					
NX881 25-35	L0881666091	25	35					
NX881 25-40	L0881602916	25	40					

For steel chain series: **Rexnord:** 812 mini hinge, 812-TAB, 881, 8811 (all).

ST 512



SS MINI



Sprocket Type	Code Number	Number of Teeth	Bore	Pitch Diameter	Outside Diameter	Width (Teeth)	Hub Width	Hub Diameter
			B	E	F	C	A	H
			mm/inch	mm	mm	mm	mm	mm

Classic Sprockets, Machined - ST 512

Metric Bores								
ST512 13-20	753.93.77	13	20*	106.1	107.4	42.9	42.9	-
ST512 15-20	753.93.78	15	20*	122.2	123.9			
ST512 17-20	753.93.79	17	20*	138.2	140.3			
ST512 19-20	753.93.80	19	20*	154.3	156.6			
ST512 21-20	753.93.81	21	20*	170.4	172.9			
ST512 23-20	753.93.82	23	20*	186.5	189.2			
ST512 25-20	753.93.83	25	20*	202.7	205.4			

* Pre-bore

For steel chain series: **Rexnord:** 512, 581 M.

Split Sprockets, Machined - SS Mini

Metric Bores								
SS MINI 21-25	753.67.61	21	25	129.3	130.0	21.0	21.0	-
SS MINI 21-30	753.67.62	21	30					
SS MINI 21-35	753.67.63	21	35					
SS MINI 21-40	753.67.64	21	40					
SS MINI 21-50	753.67.65	21	50					
SS MINI 25-25	753.67.81	25	25	153.2	153.9			
SS MINI 25-30	753.67.82	25	30					
SS MINI 25-35	753.67.83	25	35					
SS MINI 25-40	753.67.84	25	40					
SS MINI 25-50	753.67.85	25	50					

For steel chain series: **Rexnord:** 812-narrow, mini hinge.