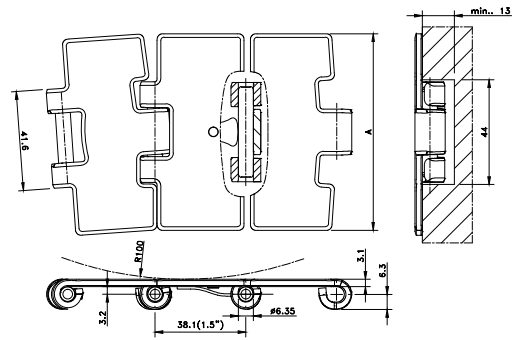


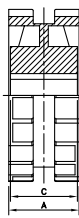
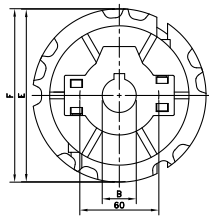
Magnetflex® Single hinge Quick Link



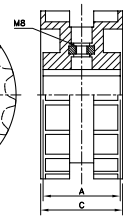
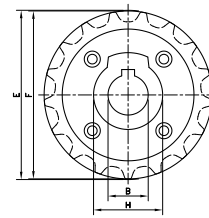
| Chain Type | Code Number | Plate Width | | Weight | Surface Flatness (max.) | Polished Hinge Eyes | Working Load (max.) |
|---------------------------------|-------------|-------------|------|--------|-------------------------|---------------------|---------------------|
| | | A | | | | | |
| | | mm | inch | kg/m | mm | | N |
| 60 Series Quick Link | | | | | | | |
| 60S31XM Quick Link | 10384449 | 82.5 | 3.25 | 2.61 | 0.08 | yes | 6000 |
| 60S84XM Quick Link | 10384450 | 84 | 3.30 | 2.63 | 0.08 | yes | |
| 60 Series HB Quick Link | | | | | | | |
| 60S31XM HB Quick Link | 10384451 | 82,5 | 3.25 | 2,61 | 0,08 | yes | 6000 |
| 60S31XM HB Quick Link | 10384452 | 84 | 3,30 | 2,63 | 0,08 | yes | |
| 66 Series XHB Quick Link | | | | | | | |
| 66S31XM XHB Quick Link | 10384453 | 82.5 | 3.25 | 2.61 | 0.08 | yes | 6000 |
| 66S84XM XHB Quick Link | 10384454 | 84 | 3.30 | 2.63 | 0.08 | yes | |

Standard length: 3.048 m - 10 feet (80 links).

NS 820



N 820



| Sprocket Type | Code Number | Number of Teeth | Bore | Pitch Diameter | Outside Diameter | Width (Teeth) | Hub Width | Hub Diameter |
|---------------|-------------|-----------------|---------|----------------|------------------|---------------|-----------|--------------|
| | | | B | E | F | C | A | H |
| | | | mm/inch | mm | mm | mm | mm | mm |

Split Sprockets, Injection Moulded - NS 820

| Metric Bores | | | | | | | | |
|--------------|-------------|----|-------|-------|-------|------|------|----|
| NS820 21-25 | L0820664341 | 21 | 25 | 129.3 | 129.5 | 52.0 | 51.0 | 60 |
| NS820 21-30 | L0820664351 | 21 | 30 | 129.3 | 129.5 | 52.0 | 51.0 | |
| NS820 21-35 | L0820664361 | 21 | 35 | 129.3 | 129.5 | 52.0 | 51.0 | |
| NS820 21-40 | L0820664371 | 21 | 40 | 129.3 | 129.5 | 52.0 | 51.0 | |
| NS820 21-45 | L0820664381 | 21 | 45 | 129.3 | 129.5 | 52.0 | 51.0 | |
| NS820 23-25 | L0820662531 | 23 | 25 | 141.2 | 142.0 | 52.0 | 51.0 | |
| NS820 23-30 | L0820662541 | 23 | 30 | 141.2 | 142.0 | 52.0 | 51.0 | |
| NS820 23-35 | L0820662551 | 23 | 35 | 141.2 | 142.0 | 52.0 | 51.0 | |
| NS820 23-40 | L0820662561 | 23 | 40 | 141.2 | 142.0 | 52.0 | 51.0 | |
| NS820 23-45 | L0820662571 | 23 | 45 | 141.2 | 142.0 | 52.0 | 51.0 | |
| NS820 25-25 | L0820665361 | 25 | 25 | 153.2 | 154.2 | 54.0 | 58.5 | |
| NS820 25-30 | L0820665371 | 25 | 30 | 153.2 | 154.2 | 54.0 | 58.5 | |
| NS820 25-35 | L0820665381 | 25 | 35 | 153.2 | 154.2 | 54.0 | 58.5 | |
| NS820 25-40 | L0820665391 | 25 | 40 | 153.2 | 154.2 | 54.0 | 58.5 | |
| NS820 25-45 | L0820665401 | 25 | 45 | 153.2 | 154.2 | 54.0 | 58.5 | |
| Inch Bores* | | | | | | | | |
| NS820 21-1 | L0820664391 | 21 | 1.00" | 129.3 | 129.5 | 52.0 | 51.0 | 60 |
| NS820 21-1¼ | L0820664411 | 21 | 1.25" | 129.3 | 129.5 | 52.0 | 51.0 | |
| NS820 23-1 | L0820662741 | 23 | 1.00" | 141.2 | 142.0 | 52.0 | 51.0 | |
| NS820 23-1¼ | L0820662761 | 23 | 1.25" | 141.2 | 142.0 | 52.0 | 51.0 | |
| NS820 25-1 | L0820665611 | 25 | 1.00" | 153.2 | 154.2 | 54.0 | 58.5 | |
| NS820 25-1¼ | L0820665631 | 25 | 1.25" | 153.2 | 154.2 | 54.0 | 58.5 | |

For steel chain series (optional): Rexnord: 812 (except TAB and mini hinge), 815.

MCC: single hinge straight run, single hinge Magnetflex.

For plastic chain series: 820, SH; Note: not suitable for 831 and SHD.

* Ask Customer service for minimum order quantity of sprockets with inch bores.

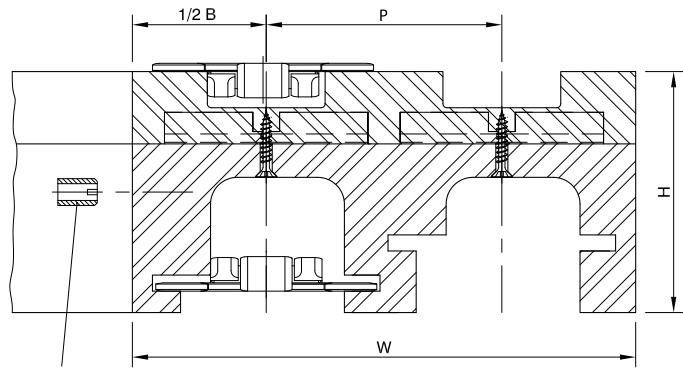
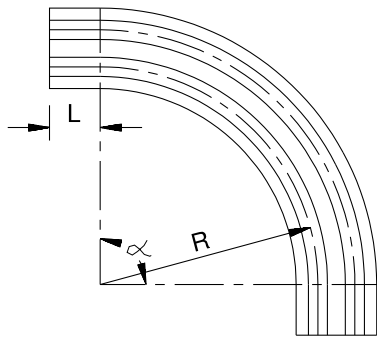
Classic Sprockets, Injection Moulded - N 820

| Metric Bores | | | | | | | | |
|--------------|-------------|----|----|-------|-------|------|------|----|
| N820 15-25 | L0820661451 | 15 | 25 | 93.7 | 92.2 | 50.0 | 50.0 | 43 |
| N820 15-30 | L0820661461 | 15 | 30 | 93.7 | 92.2 | 50.0 | 50.0 | 43 |
| N820 17-25 | L0820661681 | 17 | 25 | 105.5 | 104.7 | 51.0 | 48.0 | 43 |
| N820 17-30 | L0820661691 | 17 | 30 | 105.5 | 104.7 | 51.0 | 48.0 | 43 |
| N820 19-20 | L0820661911 | 19 | 20 | 117.4 | 117.1 | 50.0 | 50.0 | 60 |
| N820 19-25 | L0820661921 | 19 | 25 | 117.4 | 117.1 | 50.0 | 50.0 | 60 |
| N820 19-30 | L0820661931 | 19 | 30 | 117.4 | 117.1 | 50.0 | 50.0 | 60 |
| N820 19-35 | L0820661961 | 19 | 35 | 117.4 | 117.1 | 50.0 | 50.0 | 60 |
| N820 19-40 | L0820661941 | 19 | 40 | 117.4 | 117.1 | 50.0 | 50.0 | 60 |

For steel chain series (optional): Rexnord: 812 (except TAB and mini hinge), 815.

MCC: single hinge straight run, single hinge Magnetflex.

For plastic chain series: 820, SH; Note: not suitable for 831 and SHD.



Selection Tables

Select your curve by reading the tables from left to right. You'll find more information on the specified pages.

| For Chain Type (s) | Radius | Pitch | Basic Width | Infeed Length | Total Height | Version Number | See Page | |
|--|--------|-------|-------------|---------------|--------------|----------------|------------|-----|
| | R | P | B | L | H | | | |
| | mm | mm | mm | mm | mm | | | |
| For Chains With 3.25"/3.30" Plate Width | | | | | | | | |
| Steel/Plastic | 500 | 85 | 100 | 0 | 82 / 89 | C7-CX7 | 109 | |
| | | | | 100 | 90 | C6-CX6 | 108 | |
| | | | 111 | 100 | 90 | C4 | 106 | |
| | | 89 | 100 | 125 | 82 | C1 | 105 | |
| | | | 90 | 100 | 100 | 82 | C2 | 105 |
| | | | | 110 | 0 | 82 | C3 | 106 |
| | 590 | 180 | 100 | 100 | 82 | C5B | on request | |
| | 680 | - | 100 | 100 | 82 | C5A | 107 | |
| | 750 | 85 | 111 | 100 | 90 | C42 | 112 | |
| | 860 | - | 100 | 125 | 82 | C5C | 107 | |
| | 1000 | - | 100 | 0 | 82 | C5D | on request | |
| | | 85 | 111 | 100 | 90 | C43 | 112 | |
| Cip-Curve for Chains With 3.25" Plate Width for Chains with 4.50" Plate Width | | | | | | | | |
| 661 steel | 500 | 85 | 100 | 100 | 82 | CF6 | 110 | |
| Steel | 500 | 85 | 111 | 100 | 100 | C1P4 | 107 | |
| Steel/plastic | 500 | 120 | 129 | 125 | 90 | C21A | 111 | |
| | 610 | 120 | 129 | 125 | 90 | C22A | 111 | |
| For Chains with 7.50" Plate Width | | | | | | | | |
| Steel | 610 | 196 | 214 | 125 | 90 | C61 | 113 | |
| | 860 | - | 214 | 0 | 82 | C66 | 114 | |
| | 1000 | - | 214 | 0 | 82 | C65 | 114 | |
| Steel / HDFM 750 (SG) | 610 | 195 | 200 | 100 | 95 | C81 | 115 | |
| | 860 | - | 214 | 0 | 87 | C86 | 115 | |
| For Chains with 10.00" Plate Width | | | | | | | | |
| HDFM 1000 (SG) | 860 | - | 290 | 0 | 87 | C91 | 116 | |
| For Chains with 12.00" Plate Width | | | | | | | | |
| HDFM 1200 (SG) | 860 | - | 340 | 0 | 87 | C96 | 116 | |
| For LBP Chains | | | | | | | | |
| RHMD 325 LBP | 500 | 90 | 100 | 100 | 90 | LBP2 | 117 | |
| HDFM 750 LBP | 860 | - | 214 | 0 | 95 | LBP861 | 117 | |
| HDFM 1000 LBP | 860 | - | 290 | 0 | 95 | LBP91 | 118 | |
| HDFM 1200 LBP | 860 | - | 340 | 0 | 95 | LBP96 | 118 | |
| For Chainbelts | | | | | | | | |
| FGM 1050/FTM 1060 | 500 | 85 | 100 | 100 | 90 | CB6-CXB6 | 119 | |
| FTM 1055 K330 | 500 | 85 | 100 | 100 | 90 | CC6-CXC6 | 120 | |
| FTM 1055 K450 | 500 | 120 | 129 | 125 | 90 | CC21 | 121 | |

All these Magnetflex curves include a return guide shoe, except C7. Inserts are optional; M8 or M10 inserts in the return part and M6 or M8 inserts in the guide shoe can be supplied according your detailed drawing. If you need a special Magnetflex curve, following parameters are necessary:

1. Basic width
2. Radius
3. Infeed length
4. Pitch
5. Angle
6. Number of tracks