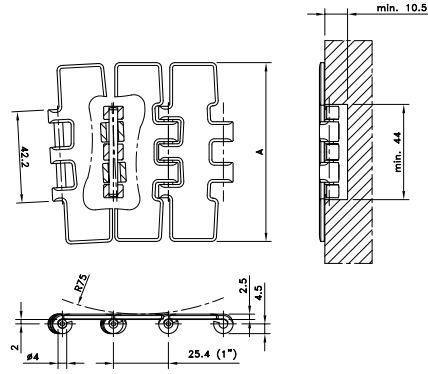


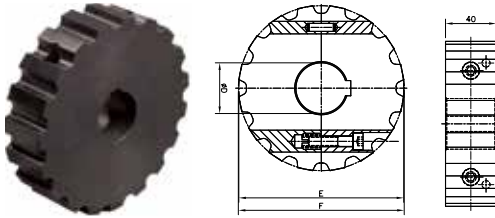
Magnetflex® Double Hinge Max-Line 1”



Chain Type	Code Number	Plate Width		Weight	Surface Flatness (max.)	Polished Hinge Eyes	Working Load (max.)
		A					
		mm	inch				
661-Series							
661 M 31 SM	767.09.90	82,5	3,25	1,96	0,10	yes	5100
661 M 84 SM	767.09.91	83,8	3,30	1,97			

Standard length: 3.048 m – 10 feet (120 links).

SS/SI 661



Sprocket Type	Code Number	Number of Teeth	Bore	Pitch Diameter	Outside Diameter	Hub Width
			B	E	F/D	A
			mm/inch	mm	mm	mm

Split Sprockets And Idlers, Machined - SS/SI 661

Sprockets, Metric Bores

KUS 661 11-30	753.95.01	11	30	90.2	89.9	40
KUS 661 11-35	753.95.02	11	35			
KUS 661 11-40	753.95.03	11	40			
KUS 661 13-30	753.95.14	13	30	106.1	106.7	
KUS 661 13-35	753.95.15	13	35			
KUS 661 13-40	753.95.16	13	40			
KUS 661 14-30	753.95.27	14	30	114.1	114.6	
KUS 661 14-35	753.95.28	14	35			
KUS 661 14-40	753.95.29	14	40			
KUS 661 15-30	753.95.40	15	30	122.2	122.8	
KUS 661 15-35	753.95.41	15	35			
KUS 661 15-40	753.95.42	15	40			
KUS 661 16-30	753.95.53	16	30	130.2	131.0	
KUS 661 16-35	753.95.54	16	35			
KUS 661 16-40	753.95.55	16	40			
KUS 661 19-30	753.95.66	19	30	154.3	155.4	
KUS 661 19-35	753.95.67	19	35			
KUS 661 19-40	753.95.68	19	40			

Sprockets, inch bores

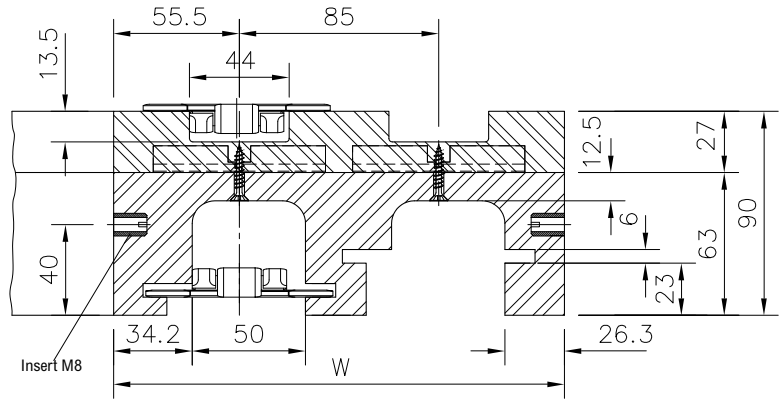
KUS 661 11-1 1/4"	753.95.04	11	1.250"	90.2	89.9	40
KUS 661 11-1 7/16"	753.95.05	11	1.438"			
KUS 661 11-1 1/2"	753.95.06	11	1.500"			
KUS 661 13-1 1/4"	753.95.17	13	1.250"	106.1	106.7	
KUS 661 13-1 7/16"	753.95.18	13	1.438"			
KUS 661 13-1 1/2"	753.95.19	13	1.500"			
KUS 661 14-1 1/4"	753.95.30	14	1.250"	114.1	114.6	
KUS 661 14-1 7/16"	753.95.31	14	1.438"			
KUS 661 14-1 1/2"	753.95.32	14	1.500"			
KUS 661 15-1 1/4"	753.95.43	15	1.250"	122.2	122.8	
KUS 661 15-1 7/16"	753.95.44	15	1.438"			
KUS 661 15-1 1/2"	753.95.45	15	1.500"			
KUS 661 16-1 1/4"	753.95.56	16	1.250"	130.2	131.0	
KUS 661 16-1 7/16"	753.95.57	16	1.438"			
KUS 661 16-1 1/2"	753.95.58	16	1.500"			
KUS 661 19-1 1/4"	753.95.69	19	1.250"	154.3	155.4	
KUS 661 19-1 7/16"	753.95.70	19	1.438"			
KUS 661 19-1 1/2"	753.95.71	19	1.500"			

Idlers, Metric Bores

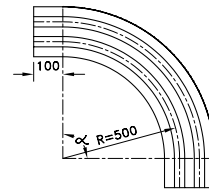
KUS 661 11-30	753.95.07	11	30	90.2	89.9	40
KUS 661 11-35	753.95.08	11	35			
KUS 661 11-40	753.95.09	11	40			
KUS 661 13-30	753.95.20	13	30	106.1	106.7	
KUS 661 13-35	753.95.21	13	35			
KUS 661 13-40	753.95.22	13	40			
KUS 661 14-30	753.95.33	14	30	114.1	114.6	
KUS 661 14-35	753.95.34	14	35			
KUS 661 14-40	753.95.35	14	40			
KUS 661 15-30	753.95.46	15	30	122.2	122.8	
KUS 661 15-35	753.95.47	15	35			
KUS 661 15-40	753.95.48	15	40			
KUS 661 16-30	753.95.59	16	30	130.2	131.0	
KUS 661 16-35	753.95.60	16	35			
KUS 661 16-40	753.95.61	16	40			
KUS 661 19-30	753.95.72	19	30	154.3	155.4	
KUS 661 19-35	753.95.73	19	35			
KUS 661 19-40	753.95.74	19	40			

For steel chain series: 661.

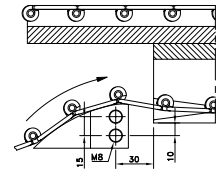
Magnetflex Combi-A Version C14



Number of Tracks	1	2	3	4	5	6
Width W	111 mm	196 mm	281 mm	366 mm	451 mm	536 mm
Version C14						
15°	704.19.16	704.19.17	704.19.18	704.19.19	704.19.20	704.19.21
30°	704.19.31	704.19.32	704.19.33	704.19.34	704.19.35	704.19.36
45°	704.19.46	704.19.47	704.19.48	704.19.49	704.19.50	704.19.51
60°	704.19.61	704.19.62	704.19.63	704.19.64	704.19.65	704.19.66
75°	704.19.76	704.19.77	704.19.78	704.19.79	704.19.80	704.19.81
90°	704.19.01	704.19.02	704.19.03	704.19.04	704.19.05	704.19.06



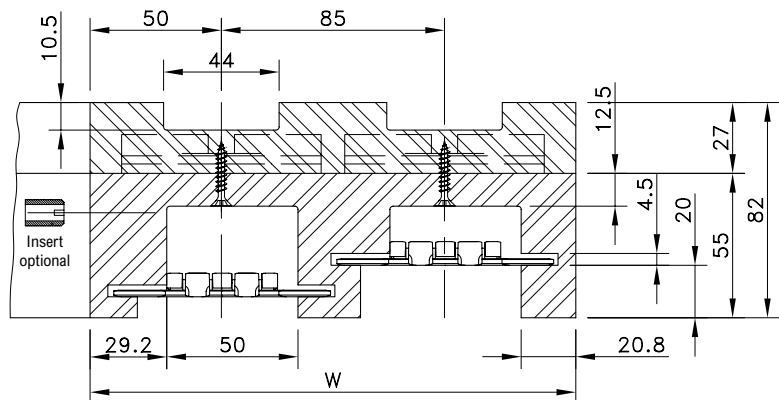
Radius



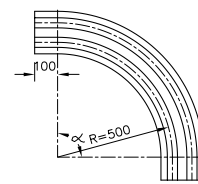
Return guide shoe

More than 6 tracks on request. C14 curves include inserts, of which the pattern varies per angle.
 • For steel chains: 10/60/66 M 31 M, 60/66 M 31 XM, 66 M 31 RM, 60/66 M 84 XM.
 • For plastic chains: RHMP 325, RHMDP 325, RHMP 84.

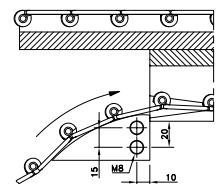
Magnetflex Combi-A Version CF6



Number of Tracks	1	2	3	4	5	6
Width W	100 mm	185 mm	270 mm	355 mm	440 mm	525 mm
Version CF6						
15°	624.38.16	624.38.17	624.38.18	624.38.19	624.38.20	624.38.21
30°	624.38.31	624.38.32	624.38.33	624.38.34	624.38.35	624.38.36
45°	624.38.46	624.38.47	624.38.48	624.38.49	624.38.50	624.38.51
60°	624.38.61	624.38.62	624.38.63	624.38.64	624.38.65	624.38.66
75°	624.38.76	624.38.77	624.38.78	624.38.79	624.38.80	624.38.81
90°	624.38.01	624.38.02	624.38.03	624.38.04	624.38.05	624.38.06



Radius



Return guide shoe

More than 6 tracks on request.
 • Other curves, such as CF4, CF7, CF42 and CF5C can be supplied as well. Please ask Technical Support for all details.
 • For steel chains: 661 M 31 SM, 661 M 84 SM.