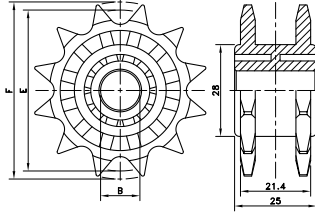
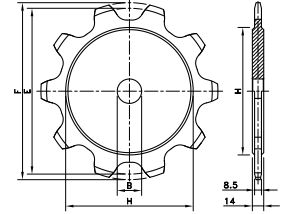


N(X) 1108



ST 1080



Sprocket Type	Code Number	Number of Teeth	Bore	Pitch Diameter	Outside Diameter	Width (Teeth)	Hub Width	Hub Diameter
			B	E	F	C	A	H
			mm/inch	mm	mm	mm	mm	mm

Classic Sprocket and Idler, Injection Moulded - N(X) 1108

Sprocket, Metric Bore								
N1108 12-12	L1108666211	12	12	49.1	54.0	21.4	25.0	28.0
Idler, Metric Bore								
NX1108 12-12	L1108666231	12	12	49.1	54.0	21.4	25.0	28.0

For plastic chain series: 1108.

The drive sprocket is fixed by mounting a pin radially through sprocket and shaft.
1108 plastic chains also run on standard 1/2" pitch roller chain sprockets that meet ANSI 40.

Classic Sprockets - ST 1080

Metric Prebores								
ST1080 08-30	L1080668371	8	30	165.9	177.7	8.5	14.0	119.0
ST1080 09-30	L1080668381	9	30	185.7	198.5	8.5	14.0	136.0
ST1080 10-30	L1080668391	10	30	205.5	219.3	8.5	14.0	158.0
ST1080 12-30	L1080668401	12	30	245.4	260.5	8.5	14.0	200.0
ST1080 14-30	L1080668411	14	30	285.4	301.5	8.5	14.0	240.0

For plastic chain series: 1080