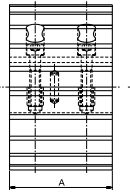
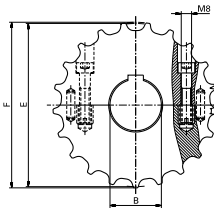
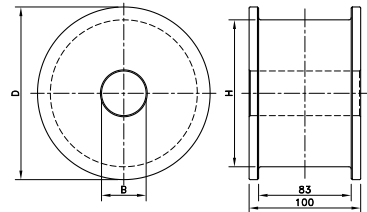


## Kus 821



## KXT 800



### Split Sprockets And Idlers, Machined - KUS 821

#### Sprockets, Metric Bores

KUS821 23-25	753.64.71	23	25	141.2	141.9	80.0	-	-
KUS821 23-30	753.64.72	23	30					
KUS821 23-35	753.64.73	23	35					
KUS821 23-40	753.64.74	23	40					
KUS821 23-50	753.64.75	23	50					
KUS821 27-25	753.64.91	27	25	165.2	165.9	80.0	-	-
KUS821 27-30	753.64.92	27	30					
KUS821 27-35	753.64.93	27	35					
KUS821 27-40	753.64.94	27	40					
KUS821 27-50	753.64.95	27	50					

#### Idlers, Metric Bores

KUS821 23-25	753.64.21	23	25	141.2	141.9	80.0	-	-
KUS821 23-30	753.64.22	23	30					
KUS821 23-35	753.64.23	23	35					
KUS821 23-40	753.64.24	23	40					
KUS821 23-50	753.64.25	23	50					
KUS821 27-25	753.64.41	27	25	165.2	165.9	80.0	-	-
KUS821 27-30	753.64.42	27	30					
KUS821 27-35	753.64.43	27	35					
KUS821 27-40	753.64.44	27	40					
KUS821 27-50	753.64.45	27	50					

For steel chain series: **Rexnord**: 802 (all), 805 MCC: double hinge.

For plastic chain series: 821, SWH.

### Classic Idler Drums, Machined - KXT 800

#### Metric Bores

KXT 800 21-25	L0800605761	21	25*	106.8	129.8	100.0	-	106.8
KXT 800 23-25	L0800605771	23	25*	119.3	142.3			119.3
KXT 800 25-25	L0800605781	25	25*	131.7	154.7			131.7

\* Pre-bore.

For steel chain series: **Rexnord**: 802 (all), 805 MCC: double hinge.