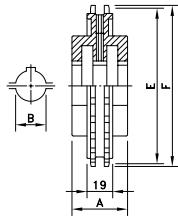
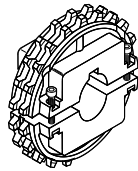
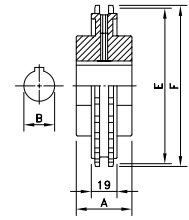
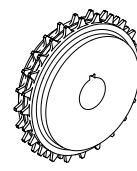


## Split Sprockets



## Classic Sprockets



Sprocket Type	Code Number	Number of Teeth	Bore	Pitch Diameter	Outside Diameter	Hub Width
			B	E	F	A
mm						

### Split Sprockets

#### Round Bores

NS 8500 T17 R25	614-176-25	17	25	104.7	105.4	39
NS 8500 T17 R30	614-176-30	17	30			
NS 8500 T17 R35	614-176-35	17	35			
NS 8500 T21 R25	614-239-1	21	25	129.0	130.0	
NS 8500 T21 R30	614-239-2	21	30			
NS 8500 T21 R35	614-239-3	21	35			
NS 8500 T21 R40	614-239-4	21	40	147.3	148.3	
NS 8500 T24 R25	614-188-25	24	25			
NS 8500 T24 R30	614-188-30	24	30			
NS 8500 T24 R35	614-188-35	24	35	153.4	154.7	
NS 8500 T25 R25	614-192-25	25	25			
NS 8500 T25 R30	614-192-30	25	30			
NS 8500 T25 R35	614-192-35	25	35			

#### Square Bores

NS 8500 T17 S25	614-177-1	17	25	104.7	105.4	39
NS 8500 T17 S30	614-177-2	17	30			
NS 8500 T17 S35	614-177-3	17	35			
NS 8500 T21 S25	614-240-1	21	25	129.0	130.0	
NS 8500 T21 S40	614-240-2	21	40			
NS 8500 T21 S60	614-240-3	21	60			
NS 8500 T24 S25	614-189-1	24	25	147.3	148.3	
NS 8500 T24 S30	614-189-5	24	30			
NS 8500 T24 S35	614-189-4	24	35			
NS 8500 T25 S25	614-193-1	25	25	153.4	154.7	
NS 8500 T25 S30	614-193-6	25	30			
NS 8500 T25 S35	614-193-5	25	35			

### Classic Sprockets

#### Round Bores

KU 8500 T24 R30	114-3046-8	24	30	147.3	148.3	35
KU 8500 T25 R50	114-3266-2	25	50	153.4	154.7	

#### Square Bores

KU 8500 T17 S40	114-3215-2	17	40	104.7	105.4	35
KU 8500 T25 S40	114-3216-2	25	40	153.4	154.7	