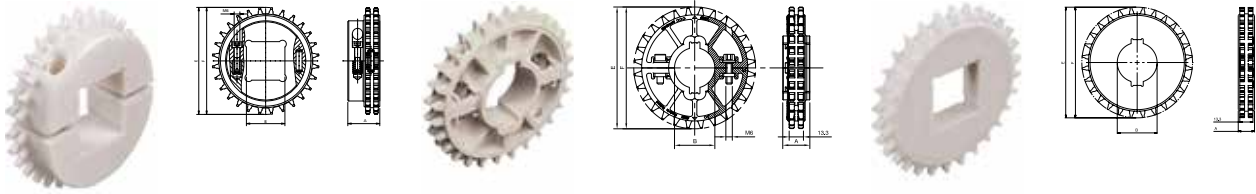


## Split Sprockets Machined

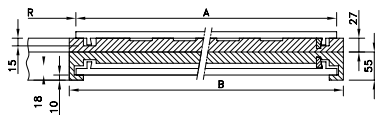
## Split Sprockets Injection Moulded

## Classic Sprockets



Sprocket Type	Code Number	Number of Teeth	Bore	Pitch Diameter	Outside Diameter	Hub Width
			B mm/inch	E mm	F mm	A mm
<b>Split Sprockets Machined</b>						
<b>Round Bores</b>						
SS 505 28-25	894.26.16	28	25 mm	113.4	113.4	33.5
SS 505 28-30	894.26.17	28	30 mm			
SS 505 28-35	894.26.10	28	35 mm			
SS 505 28-1	894.26.41	28	1.0"			
<b>Square Bores</b>						
SS 505 28-25x25	894.26.26	28	25 mm	113.4	113.4	33.5
SS 505 28-30x30	894.26.27	28	30 mm			
SS 505 28-35x35	894.26.20	28	35 mm			
SS 505 28-1x1	894.26.56	28	1.0"			
<b>Split Sprockets Injection Moulded</b>						
<b>Round Bores</b>						
SS 505 28-40	895.54.11	28	40 mm	113.4	113.4	25.5
SS 505 28-1½	895.54.41	28	1.5"			
<b>Square Bores</b>						
SS 505 28-40x40	895.54.21	28	40 mm	113.4	113.4	25.5
SS 505 28-11/2x1½	895.54.51	28	1.5"			
<b>Classic Sprockets</b>						
<b>Round Bores</b>						
CS 505 28-25	894.25.16	28	25 mm	113.4	113.4	16.5
CS 505 28-30	894.25.17	28	30 mm			
CS 505 28-35	894.25.10	28	35 mm			
CS 505 28-40	894.25.11	28	40 mm			
CS 505 28-1	894.25.46	28	1.0"			
CS 505 28-1½	894.25.41	28	1.5"			
<b>Square Bores</b>						
CS 505 28-25x25	894.25.26	28	25 mm	113.4	113.4	16.5
CS 505 28-30x30	894.25.27	28	30 mm			
CS 505 28-35x35	894.26.20	28	35 mm			
CS 505 28-40x40	894.25.21	28	40 mm			
CS 505 28-1x1	894.25.56	28	1.0"			
CS 505 28-1½x1½	894.25.51	28	1.5"			

## Positrack Curves



Other angles and non-standard positrack curves on request; these curves include a curve guiding profile. Including 100 mm long straight sections at upper part.

Code Number	Radius	Belt Width	Height	Curve Width	Angle
	R mm	A mm	mm	B mm	
<b>Positrack Curves</b>					
<b>For 505</b>					
804.02.02	510	255	27 + 55	281	90°
804.02.03	680	340	27 + 55	366	
804.02.04	850	425	27 + 55	451	
804.02.05	1020	510	27 + 55	536	
804.02.06	1190	595	27 + 55	621	
804.02.07	1360	680	27 + 55	706	