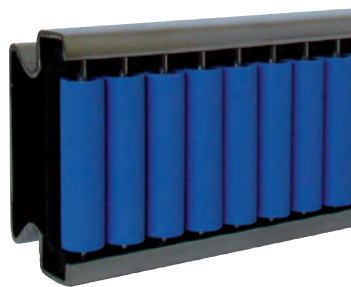
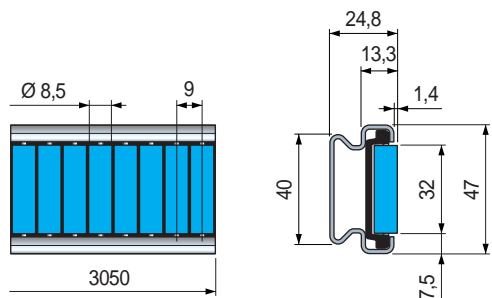


Part. S0872



Roller side guides with cylinder rollers

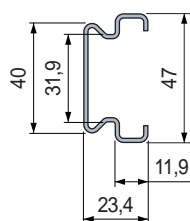


| Cylinder rollers material | Code | Weight kg |
|---------------------------|---------------|-----------|
| SEBS Rubber (Blue) | 649333 | 1,60 |

- Material: metal profile in Austenitic stainless steel, rollers module in acetal POM (black), roller pins in stainless steel.
- Standard packaging: strands 3,05 metres.
- Packaging: 2 strands.

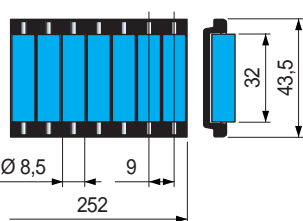
The roller side guides can be supplied with separated components.

Metal profile



| Length mm | Code |
|-----------|---------------|
| 3050 | 649413 |

Cylinder roller module



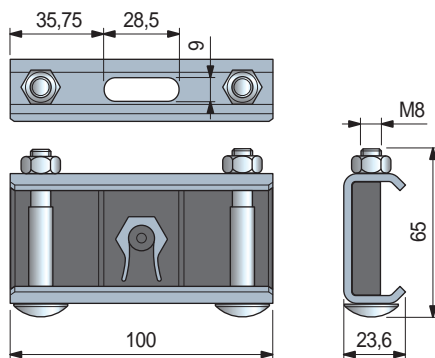
| Cylinder rollers material | Code |
|---------------------------|---------------|
| SEBS Rubber (Blue) | 646523 |

- Material: Austenitic stainless steel.
- Weight: 1,21 Kg/m.
- Packaging: 1 strand.

Part. S0794



Side Clamp



| Metal Body | Code | Weight kg |
|--------------------------|---------------|-----------|
| Ferritic Stainless Steel | 625363 | 0,28 |

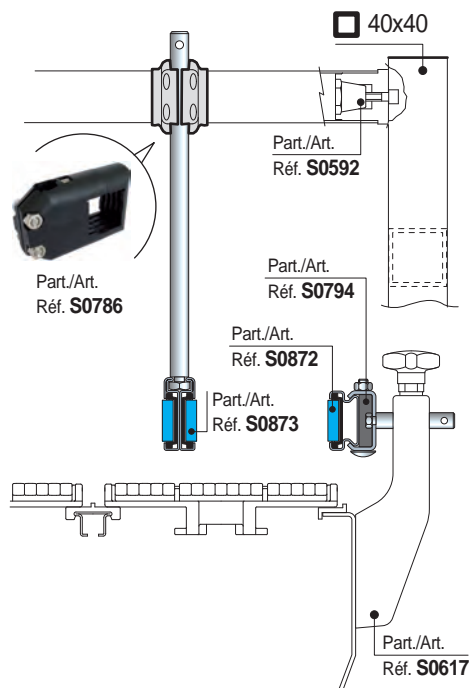
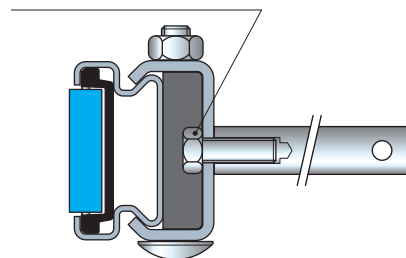
- Plastic Insert Material: POM (Black).
- Hardware: Stainless Steel.
- Packaging: 12 pieces.

Characteristics Part. S0872

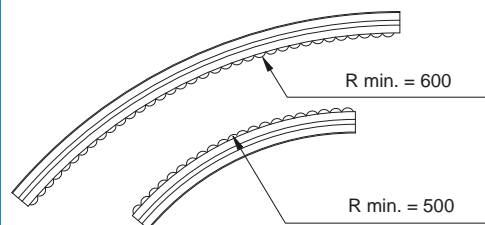
- Self supporting structure.
- Metal Profile in Austenitic stainless steel.
- Quick and easy installation by standard bolts.
- Can be used straight running and sideflexing.

Assembly Part. S0872

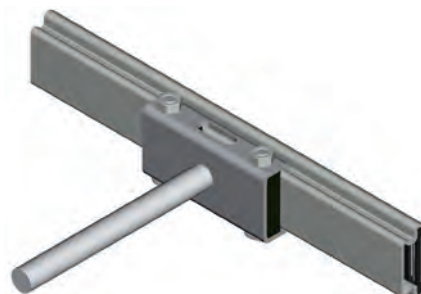
M10 hex head bolt



Min. curvature radius Part. S0872



Installation - side Usage



● Best Seller

● Standard

● On request: minimum quantity may apply. Consult our Customer Service for availability.

Item code for order = Part. + Code