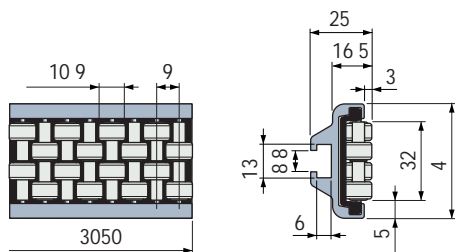
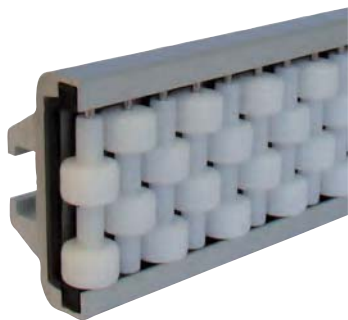


Part. S0856

Roller side guides

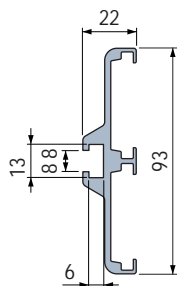


Rollers material	Code	Weight kg
Acetal POM (white)	645203	1,20

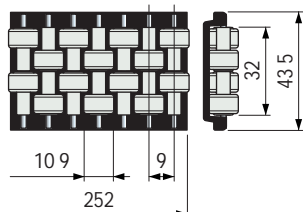
- Material: metal profile in anodized aluminium, rollers module in acetal POM (black), roller pins in stainless steel.
- Standard packaging: strands 3,05 metres.
- Packaging: 2 strands.

The roller side guides can be supplied with separated components.

Metal profile



Roller module



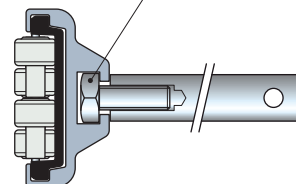
Length mm	Code	Rollers material	Code
3050	607933	Acetal POM (white)	644673
6100	607943		

- Material: anodized aluminium.
- Weight: 0,85 Kg/m.
- Packaging: 1 strand.

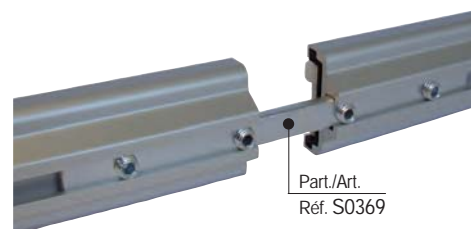
- Characteristics Part. S0856
 - Self supporting structure.
 - Anodized aluminium profile.
 - Quick and easy installation by standard bolts.
 - Can be used straight running and sideliflexing.

Assembly Part. S0856

M8 hex head bolt

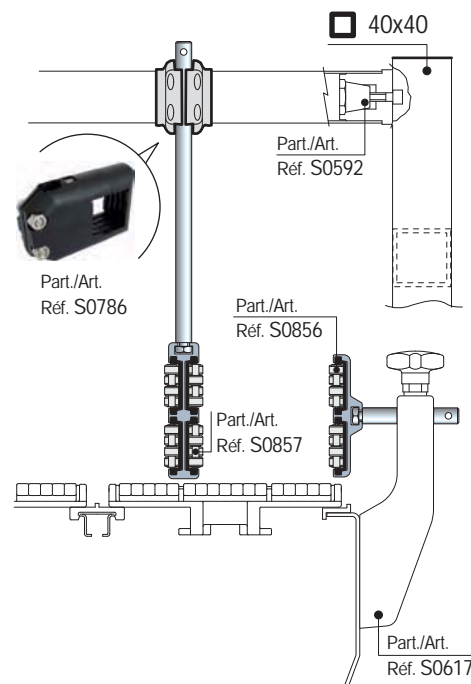
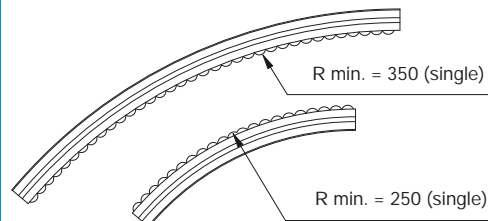


- Accessories
Part. S0369 - Connecting bar



For assembly insert the guides and tighten the set screw.

- Min. curvature radius Part. S0856



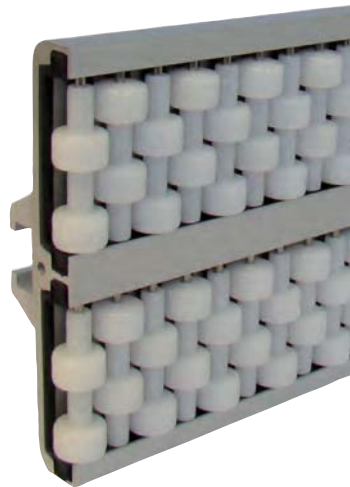
● Best Seller

● Standard

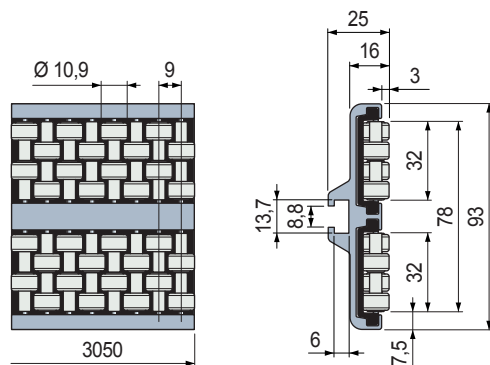
● On request: minimum quantity may apply. Consult our Customer Service for availability.

Item code for order = Part. + Code

Part. S0856



Roller side guides

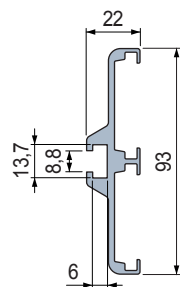


Rollers material	Code	Weight kg
Acetal POM (white)	645213	2,00

- Material: metal profile in anodized aluminium, rollers module in acetal POM (black), roller pins in stainless steel.
- Standard packaging: strands 3,05 metres.
- Packaging: 2 strands.

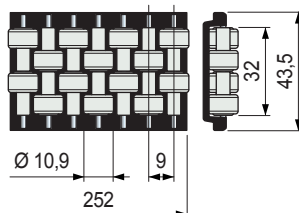
The roller side guides can be supplied with separated components.

Metal profile



Length mm	Code
3050	607953
6100	607963

Roller module



Rollers material	Code
Acetal POM (white)	644673

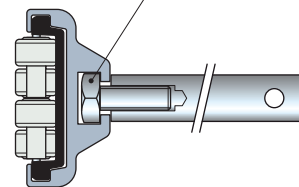
- Material: anodized aluminium.
- Weight: 1,36 Kg/m.
- Packaging: 1 strand.

Characteristics Part. S0856

- Self supporting structure.
- Anodized aluminium profile.
- Quick and easy installation by standard bolts.
- Can be used straight running and sideflexing.

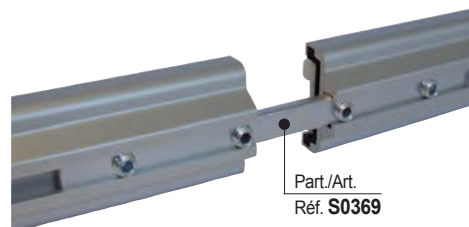
Assembly Part. S0856

M8 hex head bolt



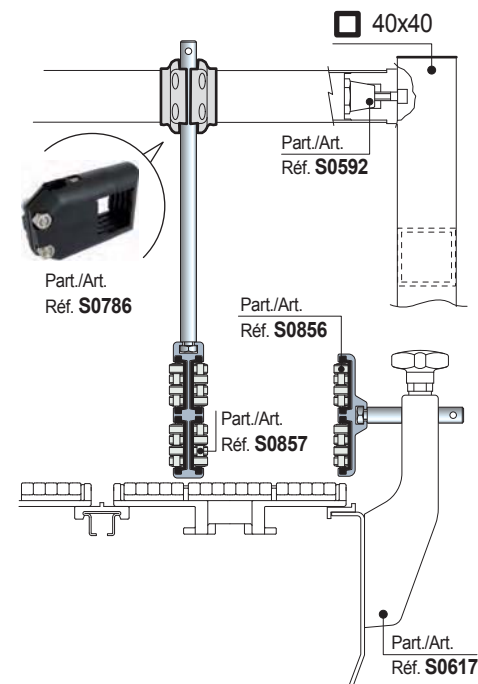
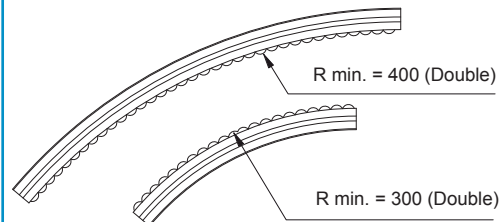
Accessories

Part. S0369 - Connecting bar



For assembly insert the guides and tighten the set screw.

Min. curvature radius Part. S0856



● Best Seller

● Standard

● On request: minimum quantity may apply. Consult our Customer Service for availability.

Item code for order = Part. + Code