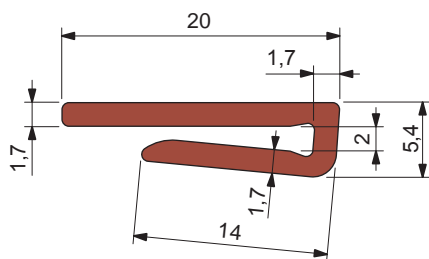


Part. S0840



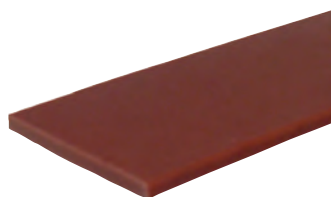
Chain - guide profile



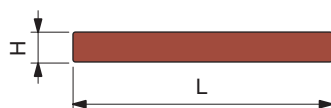
Material	Packaging metres	Code
UHMWPE		
ULF - brown red	40	UL642693

- Applicable to 2 mm thick sheet metal.
- Standard packaging: coil.

Part. S0244

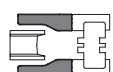


Chain - guide profile



Material	L x H mm	Packaging metres	Code
UHMWPE			
ULF - brown red	40 x 3	60	UL642563
	20 x 3	60	63711
	20 x 5	80	63691
Green	25 x 3	60	63721
	30 x 3	60	63731
	40 x 3	60	63661
	40 x 5	50	608172
Black	20 x 3	60	60386
	20 x 5	80	60376

- Standard packaging: coil.
- Accessories:



Chain inlet guide shoe side Part. S0551.

● Best Seller

● Standard

● On request: minimum quantity may apply. Consult our Customer Service for availability.

Item code for order = Part. + Code

- **Material:** Polyethylene UHMWPE with molecular density 5.600.000 g/mol. Characteristics: new material Polyethylene ULF brown red (UHMWPE): reduced friction coefficient, higher wear resistance.

- **Linear expansion coefficient:** $2 \times 10^{-4} \text{ } ^\circ\text{C}^{-1}$
Calculation of thermal expansion see Technical information.

- **Operating temperature Green Black:**

In air (- 40 to + 80 °C).

In hot water (+ 70 °C).

- **Operating temperature ULF - brown red:**

In air (- 40 to + 45 °C).

In hot water (+ 45 °C).

- **Polyethylene ULF is FDA approved**

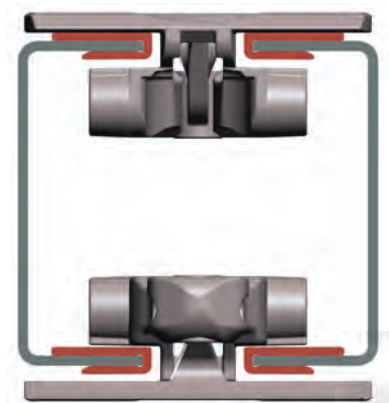
Polyethylene ULF complies with the Code of Federal Regulations Title 21, § 177.1520 "Olefin Polymers" of the Food and Drug Administration (FDA) of April 1, 2008.

- Coefficient of friction between chain POM and wearstrip ULF: 0,08

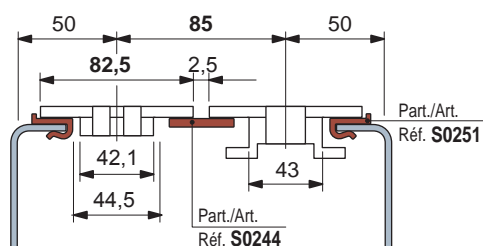
Note: for calculation of chain pull refer to Technical Support.

- **Position of guides.** See Technical information.

- ZeroGap™ chains serie 1775

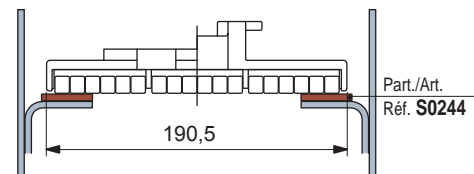


Chain width 82,5 mm (K 325) / Pitch 85 mm



- **Low backline pressure chains series SLBP** 882 TAB - SLBP 821

Chain width 190,5 mm (K 750)



Chain width 95,2 mm (K 375)

