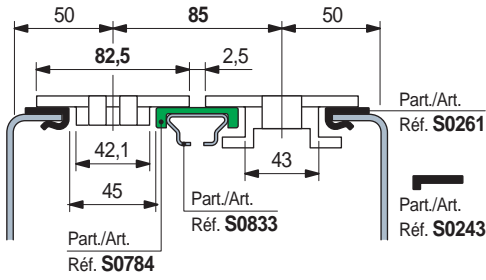
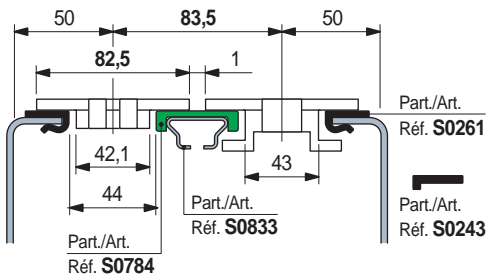


• **TableTop® chains** series 812 - 815 - 820 - 831 - 881TAB - 8811TAB - 879TAB - 880TAB

Chain width 82,5 mm (K 325) / Pitch 85 mm

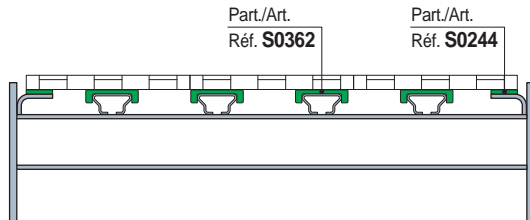


Chain width 82,5 mm (K 325) / Pitch 83,5 mm

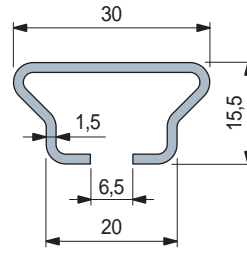


• **MatTop® modular chains**

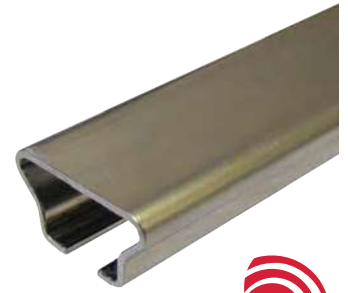
Parallel wear strips. Recommended with medium light loads.



■ **Chain - guide profile**



Part. S0833



Metal profile material	Length metres	Code	Weight kg/m
Ferritic	3	636303	0,90
stainless steel	6	636313	

- Use: recommended with MatTop® chains in abrasive environment / high speed / high temperature.

- Best Seller
- Standard
- On request: minimum quantity may apply. Consult our Customer Service for availability.

Item code for order = Part. + Code