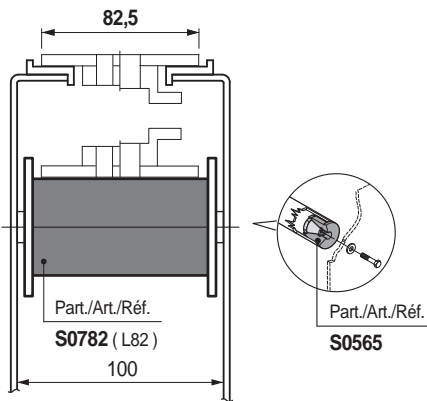
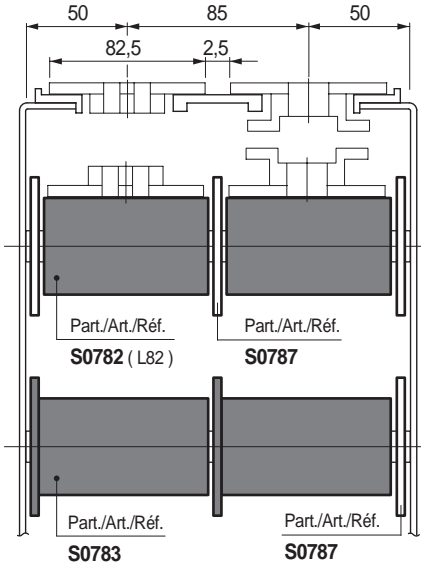


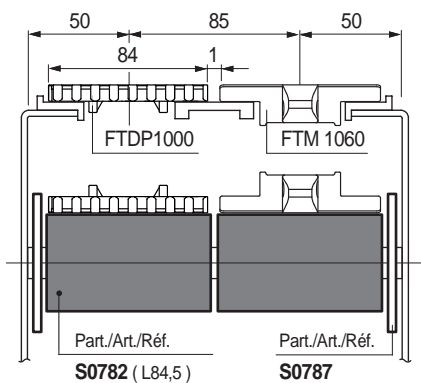
Chain width 82,5 mm (K325)



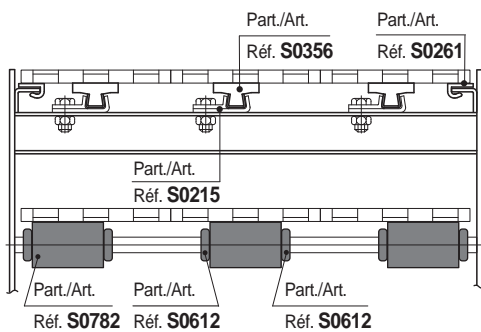
Chain width 82,5 mm (K325) / Pitch 85 mm



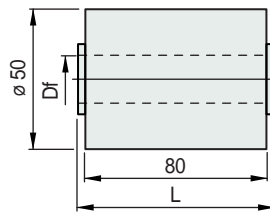
Chain width 84 mm pitch 85 mm



MatTop® modular chains



Double roller



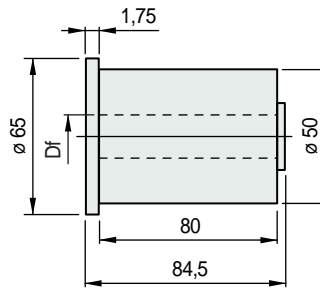
shaft dia.		Bore dia.		Code	
mm	inch	Df	mm	L = 82	L = 84,5

Version UNL™					
18	-	18,5	613953	613983	
20	3/4	20,5	613963	613993	

Version PE (Black)					
18	-	18,5	620603	620623	
20	3/4	20,5	620613	620633	

- Characteristics: completely closed design.
- Version in UNL™ low noise material.
- Colour: UNL™ (aubergine), polyethylene PE (black).
- Packaging: 100 pieces.

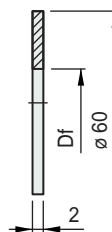
Double roller with flange



Material	shaft dia.		Bore dia.		Code
	mm	inch	Df	mm	
UNL™	18	-	18,5	614013	
	20	3/4	20,5	614023	
Polyethylene PE	18	-	18,5	620643	
	20	3/4	20,5	620653	

- Characteristics: completely closed design.
- Version in UNL™ low noise material.
- Colour: UNL™ (aubergine), polyethylene PE (black).
- Packaging: 100 pieces.

Guide flange



Material	shaft dia.		Bore dia.		Code
	mm	inch	Df	mm	
Polyethylene PE (aubergine)	18	-	18,2	614713	
	20	3/4	20,2	614723	
Polyethylene PE (black)	18	-	18,2	620663	
	20	3/4	20,2	620673	

- Assembly: to be applied to roller Part. S0782.
- Packaging: 100 pieces.

Part. **S0782**



Dia. 50 mm

Part. **S0783**



Dia. 50 mm

Part. **S0787**



For Part. **S0782**

● **Best Seller**

● **Standard**

● **On request:** minimum quantity may apply. Consult our Customer Service for availability.

Item code for order = Part. + Code