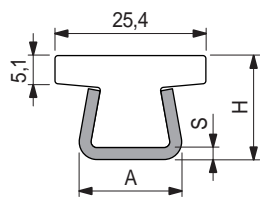


## Part. S0768



### Chain - guide profile



S	H	A
mm	mm	mm
1,5	17	16
2	17,5	17

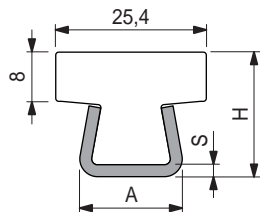
Thickness S mm	Metal profile material	Length metres	Code	Weight kg/m
1,5	Austenitic stainless steel	3	<b>609083N</b>	0,63
	Zinc plated steel	6	<b>609093N</b>	
	Austenitic stainless steel	3	<b>609103N</b>	
2	Austenitic stainless steel	3	<b>609113N</b>	0,74
	Austenitic stainless steel	6	<b>609123N</b>	

- Colour: white.
- Min. curvature radius: 160 mm.
- Linear expansion coefficient:  $4 \times 10^{-5} \text{ } ^\circ\text{C}^{-1}$ .
- Calculation of thermal expansion see Technical information.
- Packaging: 24 metres.

## Part. S0767



### Chain - guide profile



S	H	A
mm	mm	mm
1,5	20,5	16
2	21	17

Thickness S mm	Metal profile material	Length metres	Code	Weight kg/m
1,5	Austenitic stainless steel	3	<b>609033N</b>	0,72
	Zinc plated steel	6	<b>609043N</b>	
	Austenitic stainless steel	3	<b>609063N</b>	
2	Austenitic stainless steel	3	<b>609073N</b>	0,82
	Austenitic stainless steel	6	<b>609073N</b>	

- Colour: white.
- Min. curvature radius: 160 mm.
- Linear expansion coefficient:  $4 \times 10^{-5} \text{ } ^\circ\text{C}^{-1}$ .
- Calculation of thermal expansion see Technical information.
- Packaging: 24 metres.

● Best Seller

● Standard

● On request: minimum quantity may apply. Consult our Customer Service for availability.

Item code for order = Part. + Code

• **Material:** Polyethylene UHMWPE with molecular density 5.600.000 g/mol.

Characteristics: new material Polyethylene ULF brown red (UHMWPE): reduced friction coefficient, higher wear resistance.

• **Operating temperature White, Green, Black:**

In air (- 40 to + 80 °C).

In hot water (+ 70 °C).

• **Operating temperature ULF - brown red:**

In air (- 40 to + 45 °C).

In hot water (+ 45 °C).

• Polyethylene ULF is FDA approved

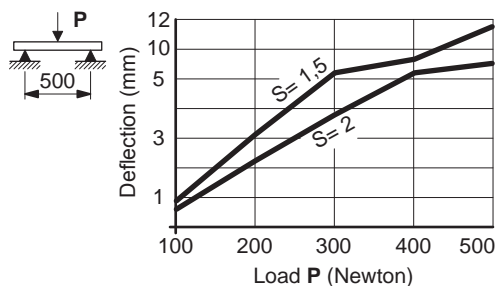
Polyethylene ULF complies with the Code of Federal Regulations Title 21, § 177.1520 "Olefin Polymers" of the Food and Drug Administration (FDA) of April 1, 2008.

• **Head joint**

Head joint shall be made with a 45° cut to avoid steps and guarantee chain smooth movement.

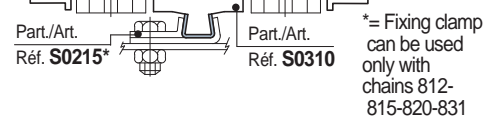
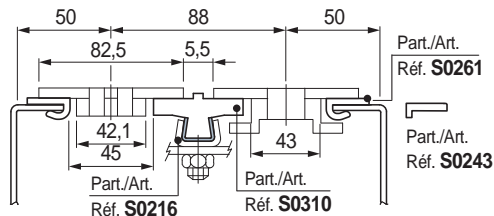
With temperature increase it is necessary to leave a gap wide enough to allow for thermal elongation of plastic parts.

• **Deflection of Part. S0223 - S0310 - S0356**

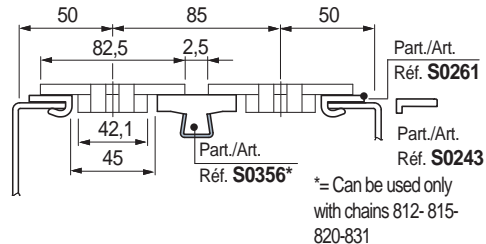


• **TableTop® chains series 812 - 815 - 820 - 831 - 881TAB - 8811TAB - 879TAB - 880TAB**

Chain width 82,5 mm (K 325) / Pitch 88 mm



Chain width 82,5 mm (K 325) / Pitch 85 mm



Chain width 82,5 mm (K 325) / Pitch 83,5 mm

