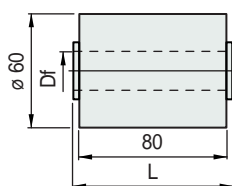


Part. S0758



Dia. 60 mm

■ Double roller



Shaft dia.		Bore dia.		Code	
mm	inch	mm	Df	L = 82	L = 84,5
Version UNL™					
15	-	15,5	15,5	608533	608553
18	-	18,5	18,5	608183	608563
19,05	3/4	19,5	19,5	612913	613563
20	-	20,5	20,5	608543	608573
Version PE (Black)					
14	-	14,5	14,5	634033	634053
15	-	15,5	15,5	620683	620723
16	-	16,5	16,5	634043	634063
18	-	18,5	18,5	620693	620733
19,05	3/4	19,5	19,5	620703	620743
20	-	20,5	20,5	620713	620343

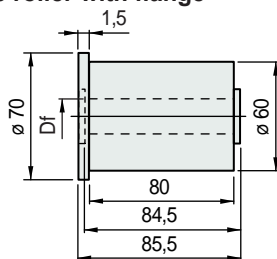
- Characteristics: completely closed design.
- Version in UNL™ low noise material.
- Colour: UNL™ (aubergine), polyethylene PE (black).
- Packaging: 100 pieces.

Part. S0778



Dia. 60 mm

■ Double roller with flange



Material	Shaft dia.		Bore dia.		Code
	mm	inch	mm	Df	
UNL™	15	-	15,5	15,5	613483
	18	-	18,5	18,5	613473
	19,05	3/4	19,5	19,5	613573
	20	-	20,5	20,5	613463
Polyethylene PE	14	-	14,5	14,5	634433
	15	-	15,5	15,5	620753
	16	-	16,5	16,5	634443
	18	-	18,5	18,5	620763
	19,05	3/4	19,5	19,5	620773
	20	-	20,5	20,5	620373

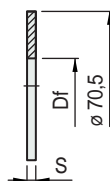
- Characteristics: completely closed design.
- Version in UNL™ low noise material.
- Colour: UNL™ (aubergine), polyethylene PE (black).
- Packaging: 100 pieces.

Part. S0555

For Part. S0554
Part. S0613
Part. S0758



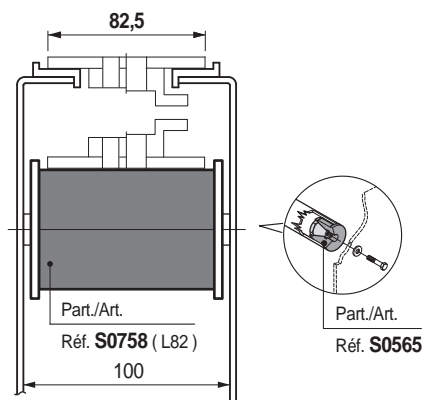
■ Guide flange



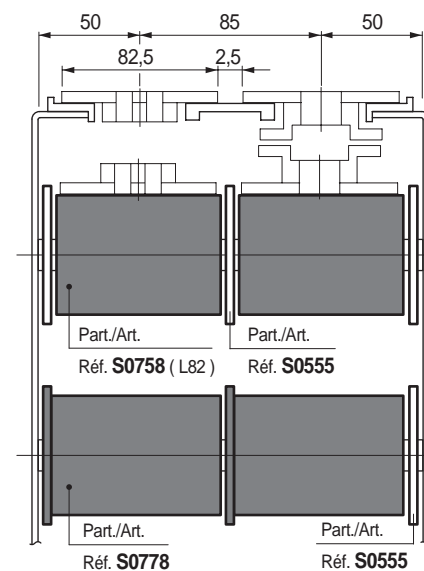
Shaft dia.		Bore dia.		Code	
mm	inch	mm	Df	S = 2	S = 1
15	-	15,2	15,2	695181	-
16	-	16,2	16,2	695191	-
18	-	18,2	18,2	695201	630693
20	3/4	20,2	20,2	695211	630703

- Material: Polyethylene PE (black).
- Packaging: 100 pieces.

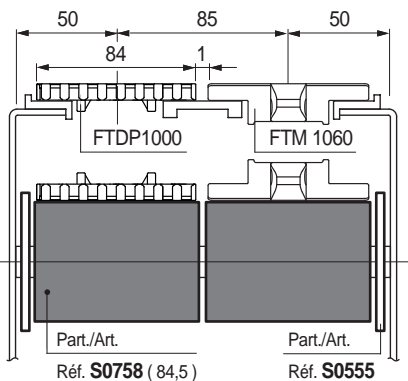
Chain width 82,5 mm (K 325)



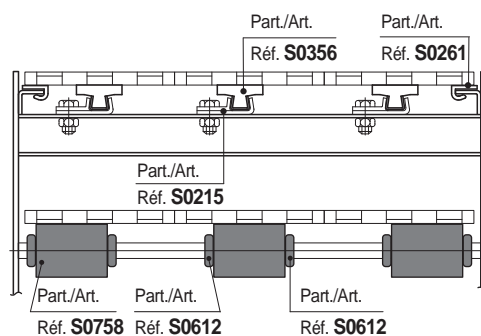
Chain width 82,5 mm (K 325) / Pitch 85 mm



Chain width 84 mm (K 325) / Pitch 85 mm



MatTop® modular chains



● Best Seller

● Standard

● On request: minimum quantity may apply. Consult our Customer Service for availability.

Item code for order = Part. + Code