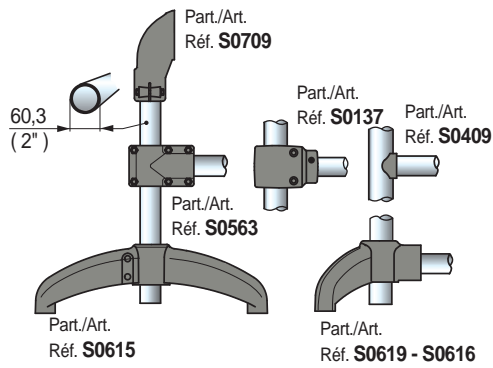
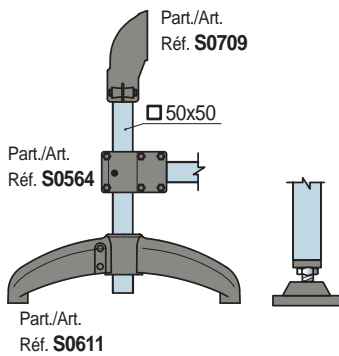


• Assembly of Part. S0709 with round tubes Ø 60,3 mm (2").

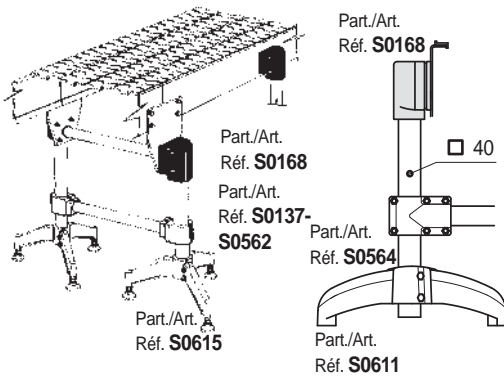


• Assembly of Part. S0709 (with square tubes 50 x 50 mm).

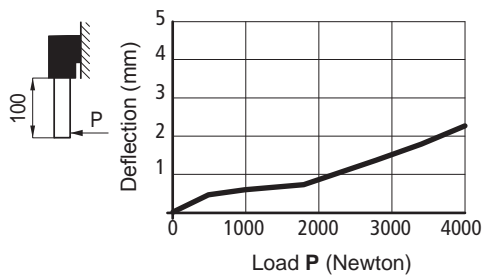


• Assembly of Part. S0168 (with square tubes)

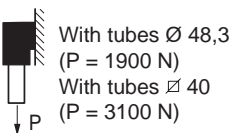
• Assembly of Part. S0168 (with round tubes)



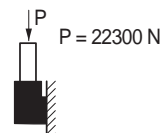
• Deflection of Part. S0168



• Sliding load

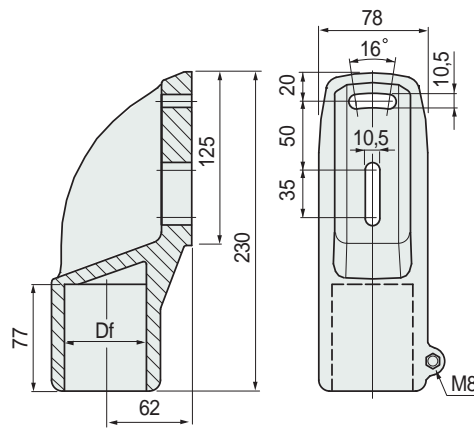


• Breaking load



Tests performed at tightening torque: 2 Kgm

■ Side mounting top bracket



Tube dimensions mm	Bore Df mm	Code
Ø 60,3 (2")	Ø 60,3	685322
∅ 50 x 50	∅ 50	685332

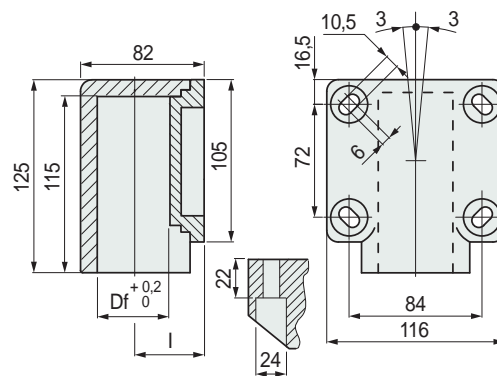
- Material: bracket in reinforced polyamide PA FV (black). Bolts in austenitic stainless steel.
- Weight: 0,75 Kg.
- Max recommended tightening torque: 2 Kgm.
- Packaging: 12 pieces.

Part. S0709



For round and square tubes

■ Side mounting top bracket



Tube dimensions mm	Bore Df mm	l mm	Code
Ø 48,3 (1 1/2)	Ø 48,3	46	50451
∅ 40 x 40	∅ 40	50	611672

- Material: reinforced polyamide PA FV (black).
- Weight: 0,42 Kg.
- Max recommended tightening torque: 2,5 Kgm.
- Packaging: 8 pieces.

Part. S0168



For round and square tubes

● Best Seller

● Standard

● On request: minimum quantity may apply. Consult our Customer Service for availability.

Item code for order = Part. + Code