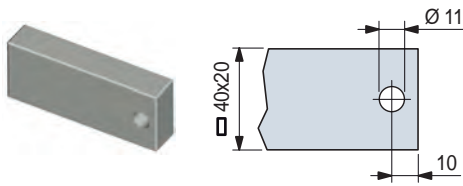


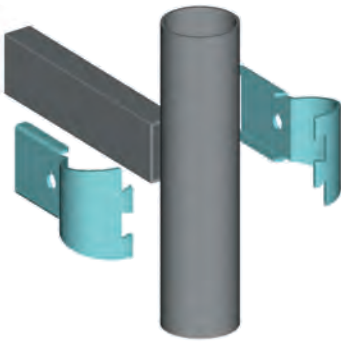
Connecting Joints

• Drilling template for rectangular tubes.

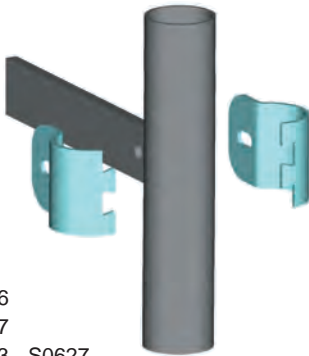


• Assembly

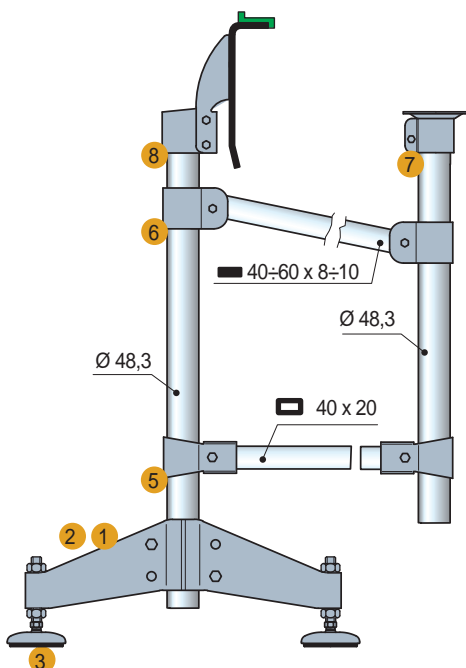
Part. S0688



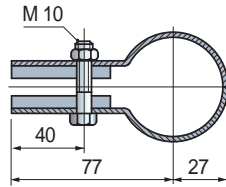
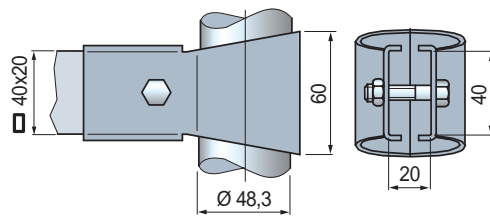
Part. S0689



- 1 - Part. S0706
- 2 - Part. S0707
- 3 - Part. S0623 - S0627
- 5 - Part. S0688
- 6 - Part. S0689
- 7 - Part. S0690
- 8 - Part. S0685



Connecting Joints



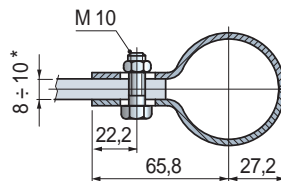
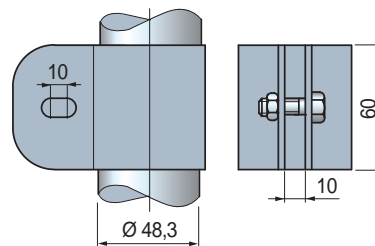
Tube dia. mm	Rectangular tube mm	Code	Weight kg
48,3 (1"1/2)	40 x 20	684552	0,35

- Material: joint and bolts in austenitic stainless steel.
- Packaging: 8 pieces.

Part. S0688



Connecting Joints



*= Can be used with plate thickness 8 ÷ 10 mm.

Tube dia. mm	Code	Weight kg
48,3 (1"1/2)	684562	0,37
50,8	609943	

- Material: joint and bolts in austenitic stainless steel.
- Packaging: 8 pieces.

Part. S0689



- Best Seller
- Standard
- On request: minimum quantity may apply. Consult our Customer Service for availability.

Item code for order = Part. + Code