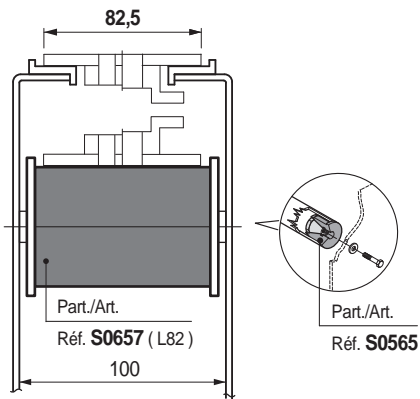
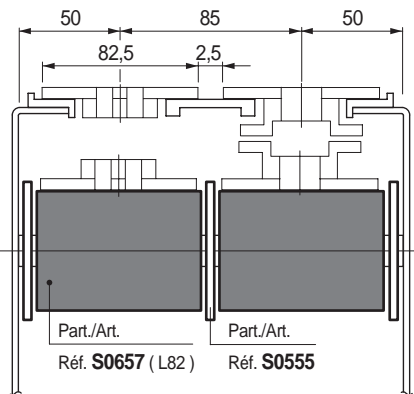


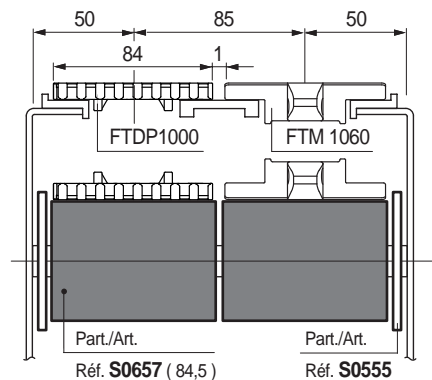
Chain width 82,5 mm (K 325)



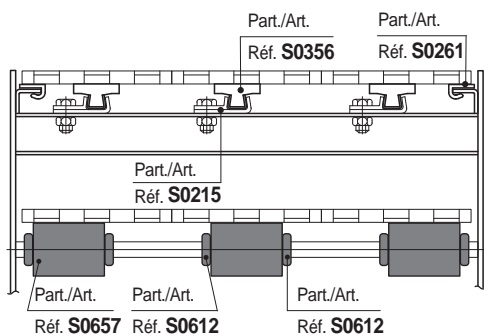
Chain width 82,5 mm (K 325) / Pitch 85 mm



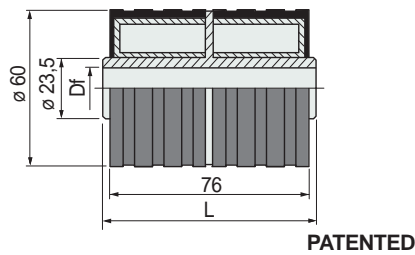
Chain width 84 mm (K 325) / Pitch 85 mm



MatTop® modular chains



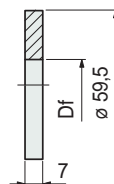
Double roller (with rubber surface)



Shaft dia. mm	inch	Bore dia. Df mm	Code	
			L = 82	L = 84,5
12,7	1/2	13,2	656982	-
15	-	15,5	656992	608253
16	5/8	16,5	657002	608263
18	-	18,5	657012	608273
19,05	3/4	19,5	656692	-
20	-	20,5	657022	608283

- Characteristics: completely closed design. Rubber surface for less noise even in high speed conveyors. Hub in acetal for low friction.
- Material: roller in acetal POM (white). Surface in thermoplastic rubber (grey). 70 shore hardness
- Packaging: 100 pieces.

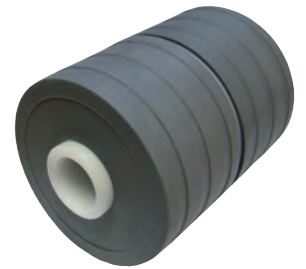
Separator



Shaft dia. mm	Bore dia. Df mm	Code
20	20,2	620783N

- Assembly: to be applied to rollers Part. S0556 - S0614.
- Material: Polyethylene PE (black).
- Packaging: 100 pieces.

Part. S0657



Dia. 60 mm

Part. S0624



● Best Seller

● Standard

● On request: minimum quantity may apply. Consult our Customer Service for availability.

Item code for order = Part. + Code