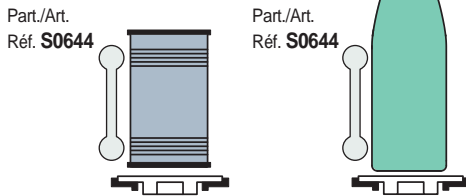
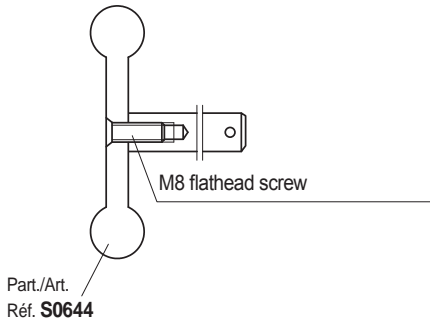


• **Use of Part. S0644**

Medium strength containers (ex: latten, glass).

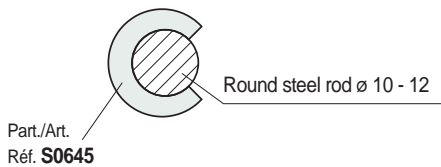


• **Fixing of Part. S0644**



• **Use of Part. S0645**

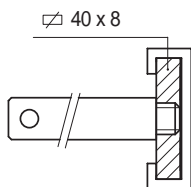
Protection of round steel rods



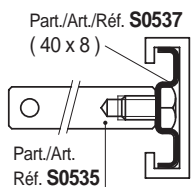
• **Fixing of Part. S0539**

Assembly / disassembly

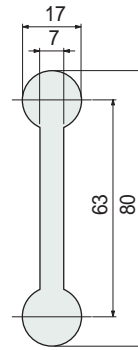
- Fixing with plate.



- Fixing with metal profile Part. S0537.



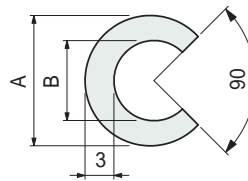
■ **Guide rail**



| Material UHMWPE | Length metres | Code |
|-----------------|---------------|---------------|
| Black | 3 | 652322 |
| Green | 3 | 652332 |

- Linear expansion coefficient: $2 \times 10^{-4} \text{ } ^\circ\text{C}^{-1}$. Calculation of thermal expansion see Technical information.
- Packaging: 36 metres.

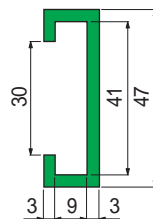
■ **Profile for round steel rods**



| Material UHMWPE | Use | A mm | B mm | Code |
|-----------------|--------------|------|------|---------------|
| White | for rod ø 10 | 14 | 9 | 652342 |
| | for rod ø 12 | 17 | 11 | 652352 |

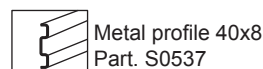
- Linear expansion coefficient: $2 \times 10^{-4} \text{ } ^\circ\text{C}^{-1}$.
- Standard packaging: coil.
- Packaging: 50 metres.

■ **Guide rail (extra flat)**



| Material | Length metres | Code | Weight kg/m |
|----------|---------------|---------------|-------------|
| Black | 3 | 689301 | 0,23 |
| | 6 | 689321 | |
| Green | 3 | 689291 | |
| | 6 | 689311 | |

- Material: Polyethylene PE 500.000.
- Linear expansion coefficient: $2,5 \times 10^{-4} \text{ } ^\circ\text{C}^{-1}$. Calculation of thermal expansion see Technical information.
- Packaging: 48 metres (in 3 m length). 96 metres (in 6 m length).
- Accessories:



Part. **S0644**



Part. **S0645**



Part. **S0539**



● **Best Seller**

● **Standard**

● **On request:** minimum quantity may apply. Consult our Customer Service for availability.

Item code for order = Part. + Code