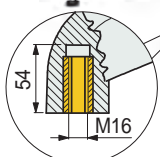
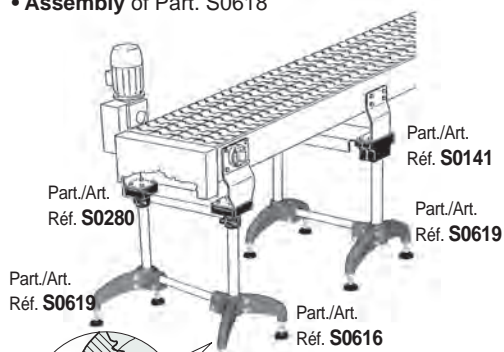
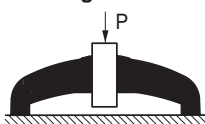


• Assembly of Part. S0618



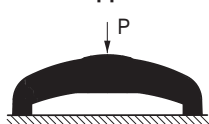
Detail of the insert for the levels.

• Sliding load



P = 8000 N.

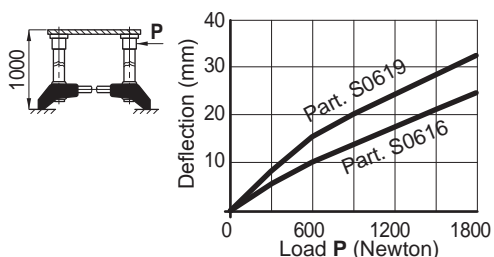
• Max applicable load



P = 8000 N.

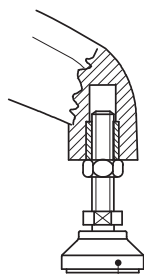
• Deflection

Part. S0616 offers a better rigidity than Part. S0619



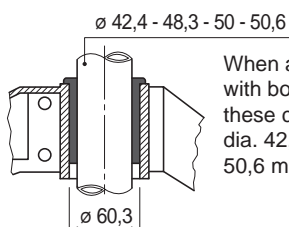
Tests performed at tightening torque: 3,6 Kgm

• Types of levels that can be used



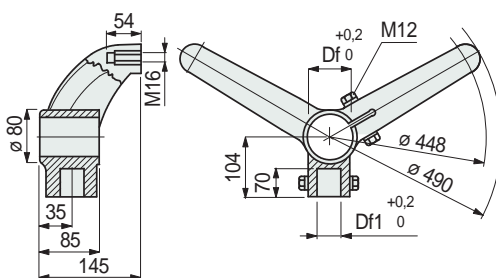
Part./Art./Réf. R0098 - R0133 - R0323

• Assembly of Part. S0124



When applied on bases with bore Df=60,3, mm these can be used with dia. 42,4 - 48,3 - 50 - 50,6 mm tubes.

■ Support base (bipod)



Vertical tube dia. mm	Horizontal tube dia. mm	Bore dia. Df mm	Bore dia. Df1 mm	Code
-----------------------	-------------------------	-----------------	------------------	------

**Bolts in austenitic stainless steel**

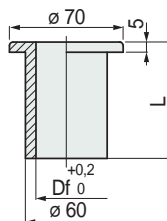
42,4 (1 <sup>1</sup> / <sub>4</sub> )	42,4 (1 <sup>1</sup> / <sub>4</sub> )	42,4	42,4	624472
48,3 (1 <sup>1</sup> / <sub>2</sub> )	42,4 (1 <sup>1</sup> / <sub>4</sub> )	48,3	42,4	624492
48,3 (1 <sup>1</sup> / <sub>2</sub> )	48,3 (1 <sup>1</sup> / <sub>2</sub> )	48,3	48,3	611203
50,8	42,4 (1 <sup>1</sup> / <sub>4</sub> )	50,8	42,4	624522
60,3 (2 <sup>1</sup> / <sub>2</sub> )	42,4 (1 <sup>1</sup> / <sub>4</sub> )	60,3	42,4	624552

**Bolts in zinc plated steel**

42,4 (1 <sup>1</sup> / <sub>4</sub> )	42,4 (1 <sup>1</sup> / <sub>4</sub> )	42,4	42,4	638882
48,3 (1 <sup>1</sup> / <sub>2</sub> )	42,4 (1 <sup>1</sup> / <sub>4</sub> )	48,3	42,4	638892
48,3 (1 <sup>1</sup> / <sub>2</sub> )	48,3 (1 <sup>1</sup> / <sub>2</sub> )	48,3	48,3	611213
50,8	42,4 (1 <sup>1</sup> / <sub>4</sub> )	50,8	42,4	638902
60,3 (2 <sup>1</sup> / <sub>2</sub> )	42,4 (1 <sup>1</sup> / <sub>4</sub> )	60,3	42,4	638912

- Material: support base in reinforced polyamide PA FV (black), brass threaded bushings.
- Weight: 1,05 Kg.
- Max recommended tightening torque: 3,6 Kgm.
- Packaging: 12 pieces.

■ Reduction bushing



Tube dia. mm	Bore dia. Df mm	L mm	Code	Weight kg
42,4 (1 <sup>1</sup> / <sub>4</sub> )	42,4	85	61980	
48,3 (1 <sup>1</sup> / <sub>2</sub> )	48,3	50	692711	
		85	61970	0,10
50	50	85	51361	
50,6	50,6	85	61770	

- Material: polyamide PA (black).
- Packaging: 10 pieces.

Part. S0616



For round tubes

Part. S0124



- Best Seller
- Standard
- On request: minimum quantity may apply. Consult our Customer Service for availability.

Item code for order = Part. + Code