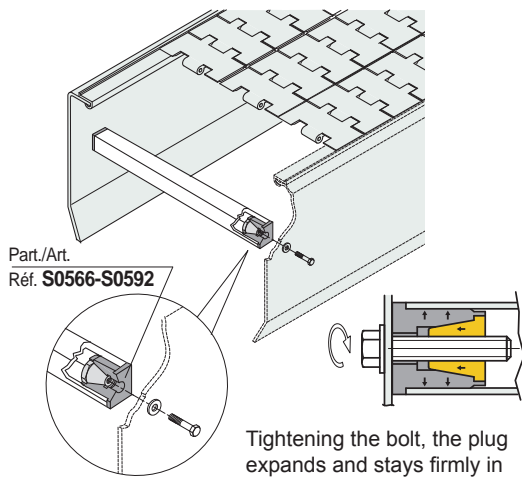


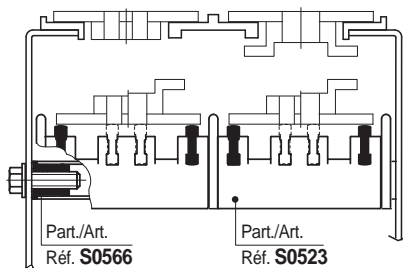
• **Assembly Part. S0566 - S0592**



Part./Art.
Réf. **S0566-S0592**

Tightening the bolt, the plug expands and stays firmly in the tube.

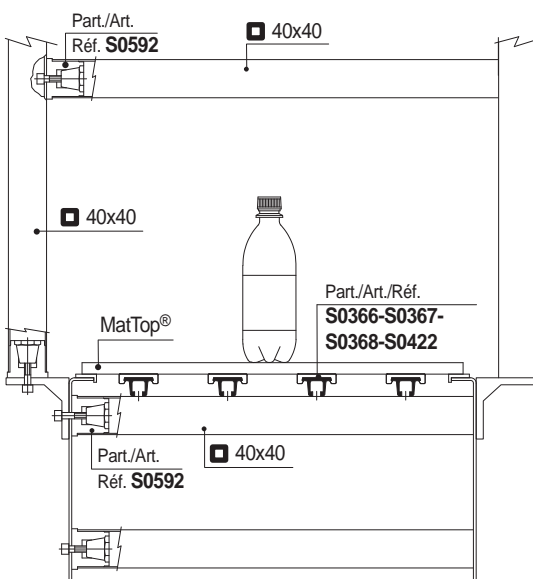
• **Application example** of Part. S0566 for return chain rollers



Part./Art.
Réf. **S0566**

Part./Art.
Réf. **S0523**

• **Application example** of Part. S0592 for modular chain conveyors to support profiles Part. S0366 - S0367 - S0368 - S0422



Part./Art.
Réf. **S0592**

40x40

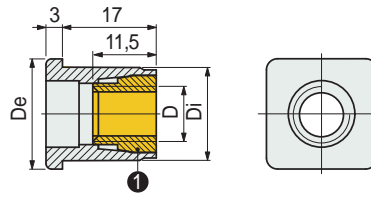
40x40

Part./Art./Réf.
S0366-S0367-S0368-S0422

Part./Art.
Réf. **S0592**

40x40

■ **Expansion plugs**



Tube dimensions

① Expansion cone

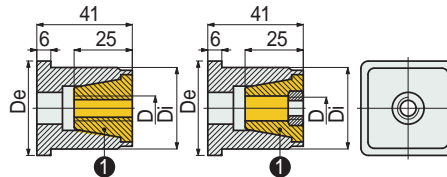
Outside mm	Thickness mm	Inside mm	Thread D	De mm	Di mm	Code
∅ 20	1,5	17	M8	20	17	698701
			M10	20	17	698711
	2	16	M8	20	16	698721

- Material: plug in polyamide PA (black), expansion cone in brass.
- Standard packaging: expansion cone is supplied separated from the plug.
- Weight: 0,01Kg.
- Packagin: 100 pieces.
- Max recommended tightening torque: 1 Kgm.

■ **Expansion plugs**

Expansion cone in brass

Expansion cone in reinforced polyamide PA FV



Tube dimensions

① Expansion cone

Outside mm	Thickness mm	Inside mm	Thread D	De mm	Di mm	Code
---------------	-----------------	--------------	-------------	----------	----------	------

• **Expansion cone in brass**

∅ 40	1,5/2	37/36	M8	42	36	609442
			M10	42	36	609462
2,5/3	35/34		M8	42	34	609482
			M10	42	34	609502

• **Expansion cone in reinforced polyamide PA FV**

∅ 40	1,5/2	37/36	M8	42	36	609452
			M10	42	36	609472
2,5/3	35/34		M8	42	34	609492
			M10	42	34	609512

- Material: plug in reinforced polyamide PA FV (black), expansion cone in brass or in reinforced polyamide PA FV.
- Weight: 0,10 Kg.
- Packaging: 50 pieces.
- Max recommended tightening torque: 2,5 Kgm (for M8), 4 Kgm (for M10).

Part. **S0566**



for round tubes ∅ 20 mm

Part. **S0592**



for round tubes ∅ 40 mm

● **Best Seller**

● **Standard**

● **On request:** minimum quantity may apply. Consult our Customer Service for availability.

Item code for order = Part. + Code