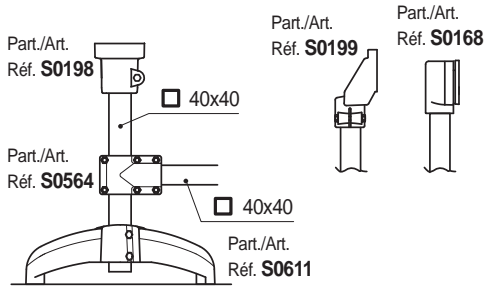


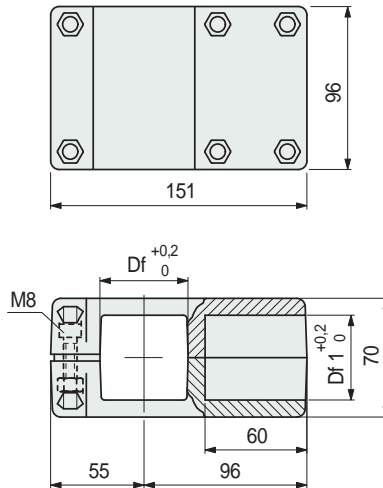
# Connecting Joints

## • Assembly of Part. S0564

Example of assembly with vertical tubes  $\varnothing$  40 mm



## ■ Connecting Joints



Tube dimensions mm	Bore Df mm	Bore Df1 mm	Code
$\varnothing$ 38 x 38	$\varnothing$ 38	$\varnothing$ 38	698531
$\varnothing$ 40 x 40	$\varnothing$ 40	$\varnothing$ 40	698541
$\varnothing$ 45 x 45	$\varnothing$ 45	$\varnothing$ 45	607112
$\varnothing$ 50 x 50	$\varnothing$ 50	$\varnothing$ 50	698551

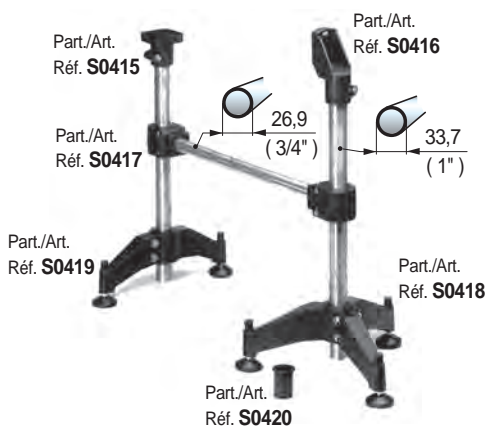
- Material: joint in reinforced polyamide PA FV (black). Tightening screws in austenitic stainless steel, nuts in nickel plated brass.
- Weight: 0,5 Kg.
- Max recommended tightening torque: 1,5 Kgm.
- Packaging: 8 pieces.

## Part. S0564

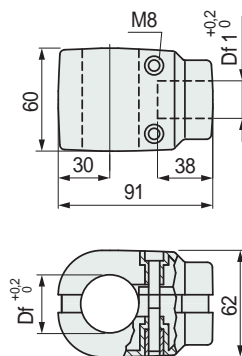


For square tubes

## • Assembly of Part. S0417



## ■ Connecting Joints



Vertical tube dia. mm	Horizontal tube dia. mm	Bore dia. Df mm	Bore dia. Df1 mm	Code
$\varnothing$ 33,7 (1")	$\varnothing$ 26,9 (3/4")	33,7	26,9	69368

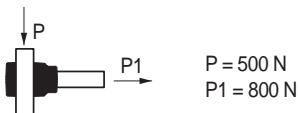
- Material: joint in reinforced polyamide PA FV (black). Tightening screws in austenitic stainless steel, tightening bushes in nickel plated brass.
- Weight: 0,21 Kg.
- Max recommended tightening torque: 2 Kgm.
- Packaging: 24 pieces.

## Part. S0417



For round tubes

## • Sliding load resistance



Tests performed at tightening torque: 2 Kgm

- **Best Seller**
- **Standard**
- **On request:** minimum quantity may apply. Consult our Customer Service for availability.

Item code for order = Part. + Code