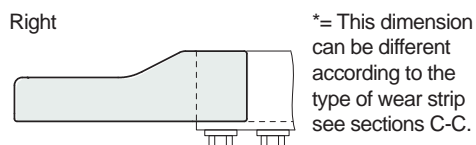
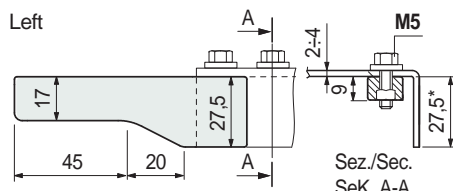
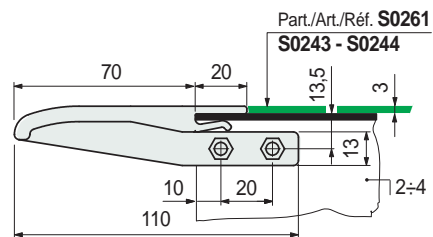


# Part. S0551



## Chain inlet guide shoe (side)



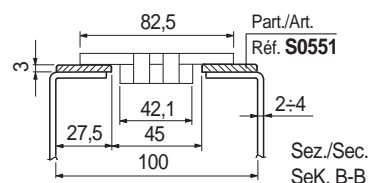
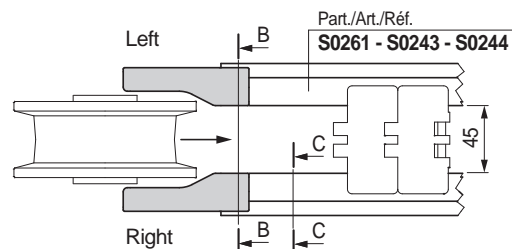
State of supply	Code	Weight kg
Left + Right	689501	0,026
Right	630913	0,013
Left	630923	0,013

- Use: can be used in combination with Part. S0261- S0243 - S0244.
- Material: polyamide PA (black).
- Packaging: 25 left + 25 right

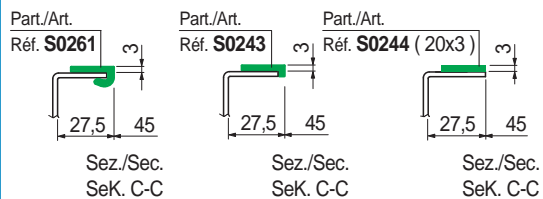
### Use for Part. S0551

In TableTop® conveyors, chain inlet guide shoes shall be used near the idlers.

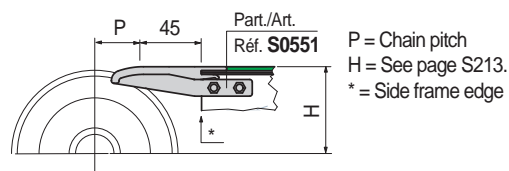
- Chain width 82,5 mm (K325).



Types of wear strips that can be used with guide shoe (only thickness 3 mm).



### Positioning



● Best Seller

● Standard

● On request: minimum quantity may apply. Consult our Customer Service for availability.

Item code for order = Part. + Code