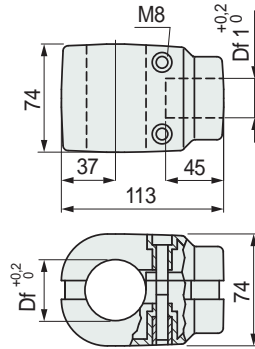


Part. S0454



For round tubes

■ Connecting Joints



Vertical tube dia. mm	Horizontal tube dia. mm	Bore dia. Df mm	Bore dia. Df1 mm	Code
Ø 42,4 (1 1/4")	Ø 33,7 (1")	42,4	33,7	69378

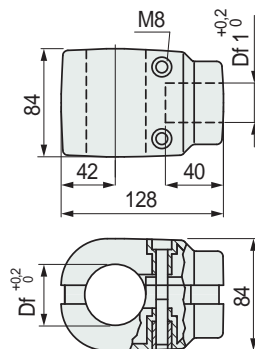
- Material: joint in reinforced polyamide PA FV (black). Tightening screws in austenitic stainless steel, tightening bushes in nickel plated brass.
- Weight: 0,36 Kg.
- Max recommended tightening torque: 2 Kgm.
- Packaging: 12 pieces.

Part. S0137



For round tubes

■ Connecting Joints



Vertical tube dia. mm	Horizontal tube dia. mm	Bore dia. Df mm	Bore dia. Df1 mm	Code
Ø 48,3 (1 1/2")	Ø 42,4 (1 1/4")	48,3	42,4	66813
Ø 60,3 (2")	Ø 42,4 (1 1/4")	60,3	42,4	65020

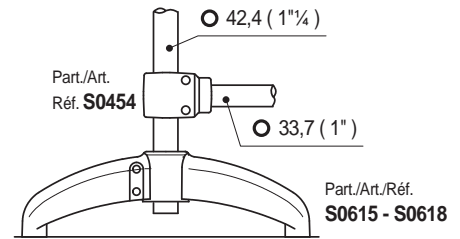
- Material: joint in reinforced polyamide PA FV (black). Tightening screws in austenitic stainless steel, tightening bushes in nickel plated brass.
- Weight: 0,44 Kg.
- Max recommended tightening torque: 1 Kgm.
- Packaging: 8 pieces.

- Best Seller
- Standard
- On request: minimum quantity may apply. Consult our Customer Service for availability.

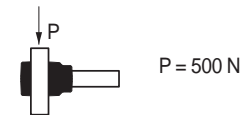
Item code for order = Part. + Code

• Assembly of Part. S0454

Example of assembly with vertical tubes ø 42,4 mm



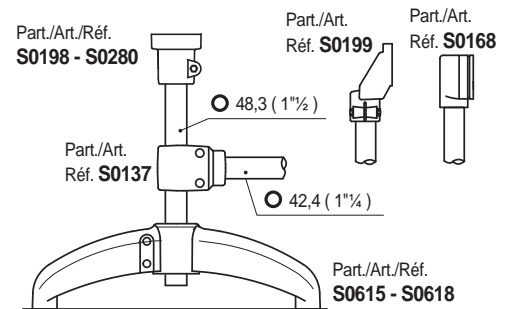
• Sliding load resistance



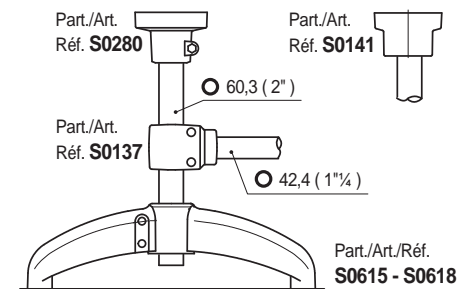
Tests performed at tightening torque: 2 Kgm

• Assembly of Part. S0137

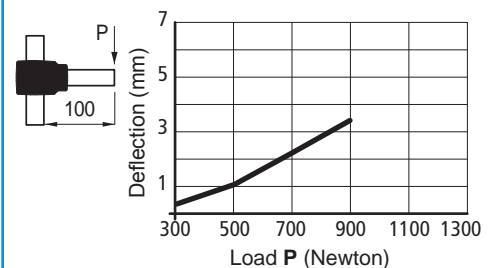
Example of assembly with vertical tubes ø 48,3 mm



Example of assembly with vertical tubes ø 60,3 mm



• Deflection



• Sliding load resistance



Tests performed at tightening torque: 1 Kgm