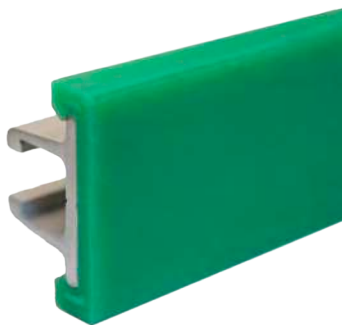
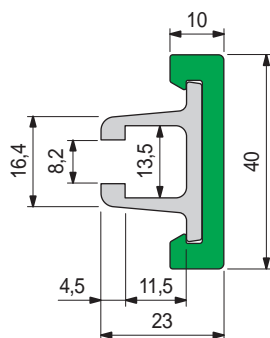


## Part. S0422



### ■ Guide rail (extra flat)



Metal profile material	Length metres	Code	Weight kg/m
Austenitic stainless steel	3	65248M	0,70
	6	65258M	

- Use: rugged containers.
- Material: plastic profile in polyethylene UHMWPE (green).
- State of supply: the plastic and metal profiles are supplied assembled.
- Plastic Profile spare part. (green): S088568309 (6 metres).
- Plastic Profile spare part. (ULF): S0885648423 (6 metres).
- Metal Profile in Anodized aluminium spare part: S0884608662 (3 metres).
- Min. curvature radius: 280 mm.
- Packaging: 24 metres.
- Accessories:

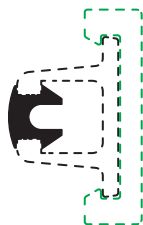


Guide rail bending machine (manual)  
Part. S0218.

## Part. S0370



### ■ Sealing profile



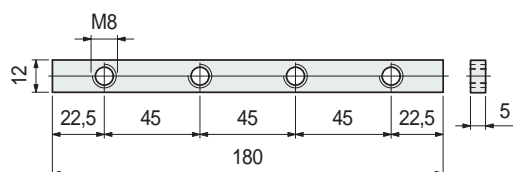
Material	Packaging metres	Code
Rubber EPDM 80 (black)	20	61036

- Use: when applied to the metal profile, this product improves guide cleanliness.
- Standard packaging: coil.

## Part. S0369



### ■ Connecting bar



Material	Code	Weight kg/m
Zinc plated steel	69995	0,10

- Packaging: 8 pieces.

● Best Seller

● Standard

● On request: minimum quantity may apply. Consult our Customer Service for availability.

Item code for order = Part. + Code

- **Material:** Polyethylene UHMWPE with molecular density 5.600.000 g/mol.

Characteristics: new material Polyethylene ULF brown red (UHMWPE): reduced friction coefficient, higher wear resistance.

- **Linear expansion coefficient:**  $2 \times 10^{-4} \text{ } ^\circ\text{C}^{-1}$

Calculation of thermal expansion see Technical information.

- **Operating temperature Green Black:**

In air (- 40 to + 80 °C).

In hot water (+ 70 °C).

- **Operating temperature ULF - brown red:**

In air (- 40 to + 45 °C).

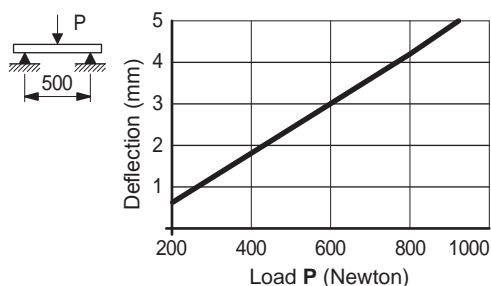
In hot water (+ 45 °C).

- **Polyethylene ULF is FDA approved**

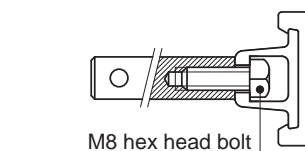
Polyethylene ULF complies with the Code of Federal Regulations Title 21, § 177.1520 "Olefin Polymers" of the Food and Drug Administration (FDA) of April 1, 2008.

- **Position of guides.** See Technical information.

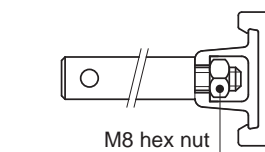
### • Deflection



### • Fixing of Part. S0422



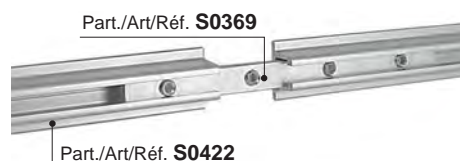
M8 hex head bolt



M8 hex nut

### • Assembly of Part. S0369

Insert the guides and tighten the set screws.



Part./Art/Réf. S0369

Part./Art/Réf. S0422



Part./Art/Réf. S0369

Part./Art/Réf. S0422