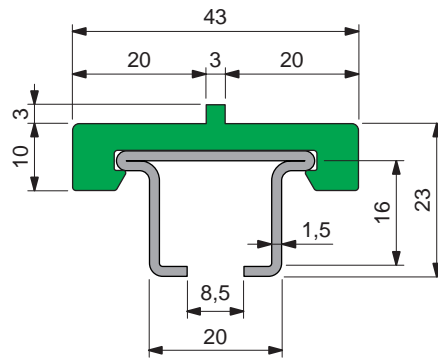


## Part. S0366



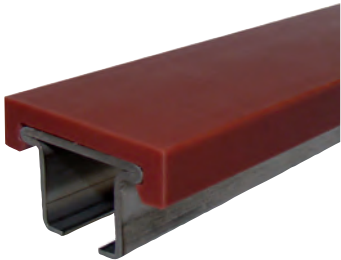
### Chain - guide profile



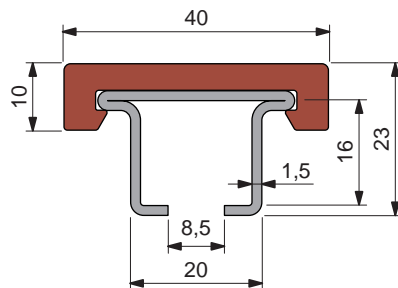
Metal profile material	Length metres	Code	Weight kg/m
Austenitic stainless steel	3	<b>64056M</b>	1,10
	6	<b>69585M</b>	
Ferritic stainless steel	3	<b>693252M</b>	
	6	<b>693262M</b>	

- Colour: green.
- Standard packaging: the plastic and metal profiles are supplied assembled.
- Packaging: 18 metres.

## Part. S0367



### Chain - guide profile



Metal profile material	Material UHMWPE	Length metres	Code	Weight kg/m
Austenitic stainless steel	ULF brown red	3	<b>UL648523M</b>	1,10
		6	<b>UL648533M</b>	
	Green	3	<b>64046M</b>	
		6	<b>69615M</b>	
Ferritic stainless steel	ULF brown red	3	<b>UL648543M</b>	
		6	<b>UL648553M</b>	
	Green	3	<b>693272M</b>	
		6	<b>693282M</b>	

- Standard packaging: the plastic and metal profiles are supplied assembled.
- Packaging: 18 metres.

● Best Seller

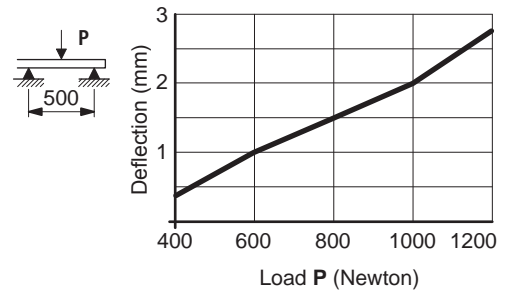
● Standard

● On request: minimum quantity may apply. Consult our Customer Service for availability.

Item code for order = Part. + Code

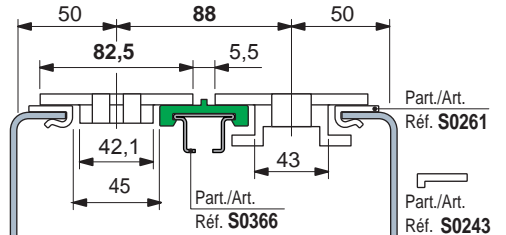
- **Material:** Polyethylene UHMWPE with molecular density 5.600.000 g/mol. Characteristics: new material Polyethylene ULF brown red (UHMWPE): reduced friction coefficient, higher wear resistance.
- **Linear expansion coefficient:**  $2 \times 10^{-4} \text{ } ^\circ\text{C}^{-1}$   
Calculation of thermal expansion see Technical information.
- **Operating temperature Green Black:**  
In air (-40 to +80 °C).  
In hot water (+70 °C).
- **Operating temperature ULF - brown red:**  
In air (-40 to +45 °C).  
In hot water (+45 °C).
- **Polyethylene ULF is FDA approved**  
Polyethylene ULF complies with the Code of Federal Regulations Title 21, § 177.1520 "Olefin Polymers" of the Food and Drug Administration (FDA) of April 1, 2008.
- Coefficient of friction between chain POM and wearstrip ULF: 0,08  
Note: for calculation of chain pull refer to Technical Support.
- **Position of guides.** See Technical information.

### Deflection of Part. S0366 - S0367 - S0368

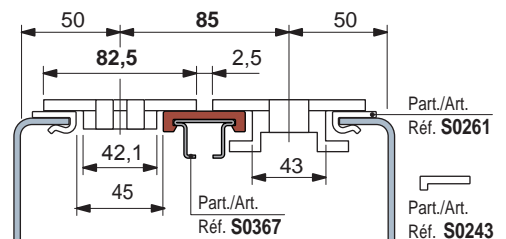


### TableTop® chains series 812 - 815 - 820 - 831 - 881TAB - 8811TAB - 879TAB - 880TAB

Chain width 82,5 mm (K 325) / Pitch 88 mm



Chain width 82,5 mm (K 325) / Pitch 85 mm



Chain width 82,5 mm (K 325) / Pitch 83,5 mm

